

Toora Football Netball Club to join the Mid Gippsland League

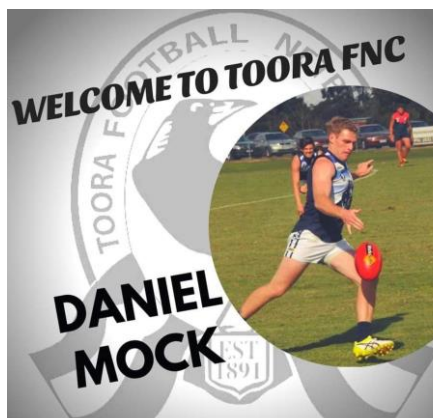
In August the Mid Gippsland Football Netball League accepted all six teams from the Alberton Football Netball League to join them. The 2021 season and beyond will see Toora, Foster, Fish Creek, Stoney Creek, Meeniyan-Dumbalk United and Tarwin join the Mid Gippsland Football Netball League.

The Toora Football Netball Club are extremely excited about this and grateful for the time and effort many people have put in to making this move a reality. Whilst there will no doubt be challenges in such a big change, through the collaboration of all six Alberton clubs, we have managed to keep the six clubs together. This will enhance our existing rivalries while allowing us to create new ones with our new opposition clubs.

The committee have chosen to change our club colours due to a clash with another club. We are currently coming up with designs for jumpers and netball dresses and will engage the club members throughout the decision process. We will still be retaining our Magpie logo.

Another change is to the netball, with the addition of "D Grade". Anyone interested should contact our netball coordinators, Sarah Stone or Emily Grylls. At this stage we are currently advertising for coaches in all grades.

With a new era about to begin at Toora we are already recruiting our 2021 coaches and players. It is great to have many returning players and a number of new faces coming on board. We look forward to great times ahead and hope you can join us on our journey.



Disclaimer

This newsletter is an independent self-funded publication produced by staff and volunteers of the RTC and it does not reflect the opinions of the Committee members, South Gippsland Shire, or the Department of Planning and Community Development.



TRADING HOURS

MON - FRI

10.00AM - 3.00PM

- WELSHPOOL COMMUNITY LIBRARY
- BENDIGO BANK AGENCY
- CENTRELINK AGENCY
- V/LINE TICKETING OFFICE
- ROOM HIRE AVAILABLE
- PASSPORT APPLICATIONS
- COPY & PRINT SERVICES

Other services by appointment only

- Diabetes Clinic – 5683 9780
- Gibson Accounting – 5176 2031
- Royal Flying Doctors – 03 8412 0480
- Massage – 0427 881 398



Centrelink Website

The Centrelink website (www.centrelink.gov.au) has been incorporated into the Department of Human Services website humanservices.gov.au. The new site is a convenient, single entry point for health, social and welfare payments and services.

Any questions regarding your payments or entitlements, this would be your first port of call.

- ***You are able to register online and access details of your account.***
- ***Find out the latest information regarding services.***
- ***Calculations can be done to work out family assistance.***
- ***Access forms and brochures.***

A touch screen computer is available at the Welshpool Rural Transaction Centre for your use.

Staff at the Centrelink agency are able to assist you with registration etc.



VLINE BUS SERVICES

**Purchase tickets at the
Rural Transaction Centre or
collect a VLINE Bus Timetable**

DIABETES CLINIC

If you would like an appointment
or have any queries, please contact

Karen on 03 5683 9780



Gibson Accounting

Kieran Olree

PH: (03) 5176 2031

Fax: (03) 5174 6313

101 Hotham Street
Traralgon, Vic 3844

Email: kieran@gibsonaccounting.com.au

Kieran Olree is at the RTC every Wednesday

By appointment only - **(03) 5176 2031**

For more information and all the latest tax
updates and handy hints for tax time,
please visit Gibson's website:

www.gibsonaccounting.com.au

Welshpool Op Shop & Nursery

With the easing of restrictions, the Welshpool Op Shop and Nursery is open once again. Thank you to everyone for their ongoing support and patience. The Op Shop will be open Monday to Friday 10am to 3pm at this stage. We will review these times down the track and will hopefully extend these hours soon. At this stage we are unfortunately closed on the weekends.

We are accepting donations but please be sure they are in clean, sellable condition. Please do not leave donations outside after hours but see one of our volunteers during open hours.

Safety is still our priority so please be sure to sanitise on entry and continue to observe social distancing. We look forward to seeing you soon.



The RTC have a range of gift ideas available including macramé plant hangers, key chains, candle holders, wooden planter boxes, bird cages and more. We also have 'chain of hearts' and 'string of pearl' hanging plants.

All items are locally made and will make the perfect gift idea for that special someone.

The Rural Transaction Centre is open Monday to Friday 10am to 3pm.



WELSHPOOL RTC



20% off all floor stock

Extended to end October

**A variety of shirts, jumpers,
jackets, pants and shorts
available in store now**

Hi Vis and Casual wear

Call in or phone 56881051



Welshpool Recreation Reserve

As you drive down Port Welshpool Road, you will notice quite a change to the Arthur Sutherland Recreation Reserve. The front fence line has been cleared making way for our new fence and opening up the area so our wonderful facility can be admired from the street view. After receiving a generous grant from the South Gippsland Shire, the tired old front fence has been completely replaced with a feature entrance way and is now much more appealing to the eye.

The shed is almost complete and will be a great asset to the facility and the clubs that call Welshpool home.

We are very pleased to see the Golf Club back running competitions, and we look forward to seeing the return of Soccer and Basketball in the not too distant future.



Community Garden Beds

Welshpool has a new look. The Welshpool and District Advisory Group has been successful in obtaining four new planter boxes that are now proudly erected in the Main Street. Our thanks go to the South Gippsland Shire Council who are responsible for sourcing them from Parks Victoria.

The planter boxes have been initially set up and planted by Parks Victoria. The ongoing maintenance and care of the garden beds is the responsibility of the local businesses in Welshpool.

We wish to thank all those responsible for brightening up our streetscape.



Use Citrus Peels To Start Your SEEDLINGS

Start your seedlings in a citrus peel, and not just because it's really cute. It will compost in the soil and nourish the plants, so you can just go ahead and plant the whole thing once it's ready. Just don't forget to poke a hole in the bottom for drainage.

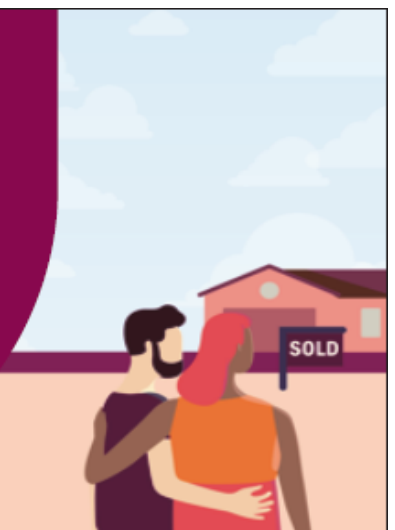


Our new Complete Home Loan...

...takes care of you completely. Great rates and 100% offset make the Complete Home Loan one of our most exciting home loans yet!

So whether you're buying your first or next home, refinancing or investing, the Complete Home Loan has you covered.

Chat to a home loan specialist today, phone our Welshpool Agency on 5688 1051 or search Bendigo Bank home loans.



bendigobank.com.au

Terms and conditions, fees, charges and lending criteria apply. All information including interest rate is current as at 7 September 2020 and may be subject to change. Full details available on application. Credit provided by Bendigo and Adelaide Bank Limited ABN 11 068 049 178 Australian Credit Licence 237879. A1419239 OUT_1520685, 22/09/2020

Passionfruit coconut slice recipe

INGREDIENTS

- ☐ 120g butter, softened
- ☐ 1/2 cup (110g) caster sugar
- ☐ 1 Coles Australian Free Range Egg
- ☐ 1 cup (150g) plain flour
- ☐ 1/2 cup (40g) desiccated coconut

PASSIONFRUIT CURD

- ☐ 170g can Coles Passionfruit Pulp
- ☐ 50g butter, chopped
- ☐ 2 Coles Australian Free Range Eggs, lightly whisked
- ☐ 1/2 cup (110g) caster sugar
- ☐ 1 tbs lemon juice
- ☐ 1 tsp finely grated lemon rind

COCONUT TOPPING

- ☐ 2 Coles Australian Free Range Eggs, lightly whisked
- ☐ 1/2 cup (110g) caster sugar
- ☐ 1 1/2 cups (120g) desiccated coconut
- ☐ 1 1/2 cups (115g) shredded coconut

METHOD:

Step 1: To make the passionfruit curd, place passionfruit pulp, butter, egg, sugar, lemon juice and lemon rind in a small saucepan over medium-low heat. Cook, stirring constantly, for 5 mins or until the mixture boils and thickens. Transfer to a heatproof bowl. Cover and place in the fridge for 1 hour to chill.

Step 2: Preheat oven to 180 °C. Grease a 20cm x 30cm lamington pan and line the base and sides with baking paper, allowing the sides to overhang. Use an electric mixer to beat the butter and sugar in a bowl until pale and creamy. Add egg and beat until well combined. Stir in the flour and coconut. Spoon into the prepared pan and smooth the surface. Bake for 15-20 mins or until light golden. Set aside to cool slightly. Spread evenly with passionfruit curd.

Step 3: To make the coconut topping, whisk egg and sugar in a large bowl. Add the combined coconut and use a fork to stir until combined. Sprinkle over the slice. Use the back of a spoon to flatten the coconut mixture slightly.

Step 4: Bake for 20 mins or until golden. Set aside to cool. Cut into pieces.



****Open Saturdays & Sundays 10am – 4pm****



Phone 0400 110 318

the **Olive Branch**

35 Main Street
Welshpool
Prom. Country

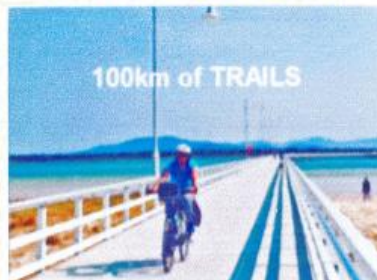
LET'S GO RIDE A BIKE
WHAT A GREAT DELIGHT !!



*Drinks and Snacks.
Coffee and Cake*



*Retro, Collectables and Bric a brac
We Buy and Sell*



*Day Hire Available -
From 8 Yrs to Adult*



f Find us on
Facebook



Corner Inlet Swimming Club Dolphins

The Corner Inlet Swimming Club (CISC) welcomes existing and new families to start of our 20/21 training season commencing Term 4, Monday 12th October

When:	Mondays 4.30pm – 6pm (+ Junior Squad) Wednesdays 4pm – 5.30pm
Where:	Toora Swimming Pool
Why:	Fun, Fitness, Technique, Endurance, Competition
Who:	8yo to 100+yo who can competently swim 2 laps of the pool in 3 strokes
What to Bring:	Goggles, Flippers, Water Bottle, Towel
Covid:	Please arrive 10 min prior to session to allow time to complete the Pool & CISC registers Masks & social distancing rules apply
Contact:	Jill 0417 582 180 or Wil 0407 747 667 dolphiniscisc@gmail.com Facebook: Dolphins – Corner Inlet Swimming Club

**Come and try
First session FREE**

(Pool entry fees still apply)

CISC is a family friendly swimming club offering accessible training where members can improve swimming fitness, technique and challenge themselves to achieve personal best times.

“Ribbons are a bonus. not a focus!”

Corner Inlet Dolphins Back in the Pool

Bathers, goggles, flippers, towel and a motivation to get swim fit. That's what you need to come on down and enjoy a season with the Corner Inlet Dolphins Swimming Club.

The Corner Inlet Dolphins Swimming Club will commence Spring training on the first week of Term Four at the Toora Swimming Pool. The first session will be a '**Come and Dive In**' afternoon on Monday October 12th from 4.15 until 5.45pm and on Wednesday 14th October from 4.00 – 5.30, and everyone is welcome to come along to training and find out what the club is all about.

The club meets at the Toora Pool each week during term 4 and again in term 1 2021. Two nights of training are offered with local qualified coaches as we know families have busy schedules to juggle. This means you can choose which nights suits you best or come along both sessions if you wish.

The Corner Inlet Swimming Club (Dolphins) is a family friendly club that offers swimmers a range of swimming training experiences. It offers squad training for swimmers from the age of 8 who can competently swim a lap of the pool in three strokes.

Swimming is a great workout because it builds endurance, core body strength and cardiovascular fitness. Joining a swim club teaches young people important life skills like water safety, commitment, time management, healthy lifestyle choices, social skills, work ethic and plenty more.

Swimming is also a great hobby and sport that can be enjoyed by the whole family. So come on down to the Toora Swimming Pool and 'Dive In' with the Dolphins!

To find out more including registration details and costs give Jill a call/text on 0417 582 180 or email dolphiniscisc@gmail.com

**E.W. & H.P. FOWLER
WELSHPOOL OUTDOORS &
ORIGIN GAS SUPPLIES**

**19 MAIN STREET
WELSHPOOL VIC 3966
PH: 0356881304
EMAIL: welshpooloutdoors@bigpond.com**



**WE'RE HERE
TO STAY**

**QUAD BIKE
✓ COMPLIANT
SAFETY STANDARD**

Compliant quad bikes available now that meet the Consumer Goods (Quad Bikes) Safety Standard.

 **3 YEAR WARRANTY** 

Australian Made QFDs

• Albury (02) 4021 4392 • Ballarat (03) 5339 4200 • Carrong (02) 4076 1151 • Donald (03) 5497 1611 • Ferntree Gully (03) 9758 8000
• Hamilton (03) 5572 4327 • Kilmore (03) 5782 1616 • Lake Boga (03) 5037 2389 • Leongatha (03) 5642 4044 • Portland (03) 5523 5399
• Red Cliffs (03) 5024 3610 • Shepparton (03) 5849 1577 • Tooradin (03) 5998 3216 • Traralgon (03) 5174 1702
• Warragul (03) 5622 3875 • Warrambol (03) 5561 1700 • Welshpool (03) 5688 1304 • Whittlesea (03) 9716 2019

 **CFMOTO**
CFMOTO.COM.AU

Distributed by Mojo Motorcycles

Welshpool Golf Club

Finally, with further easing of restrictions we are able to get back to near normal (Covid normal) and try to catch up on some of the comps that have been on hold for ages. Fri 25/09/20 saw the first Chook Run (9 hole stableford) for months. Winner on 16pts Paul Delaney, Runner up L Pope & on 15pts, NTP D Lucas (8th). Sat 26/09/20 saw the 1st round of the Mens Championship. Won by A Ditta nett 72, Runner up G Brown. No NTP. Sun 27/09/20 saw a small turnout for a 9 hole Stableford. Won by G Wilkinson on 17pts.

Thank you to all for your patience. Next Sat 03/10/20 will see the 2nd round of our Mens Championship combined with Oct Monthly Medal and Star Medal. The following Sat 10/10/20 will see the Mens Foursome played.

Let's hope things continue to improve. Stay safe and remember, we are supposed to play Golf for fun.

Richard Knowles

Mens Captain

WGC

Toora Football
Netball Club

MAGPIE 50 CLUB

Magpie 50 members get:

-weekly \$500 draw for 52 weeks (live on facebook each Thursday)

-\$100 to spend on our new club apparel

-\$50 off your 2021 membership

Become a Magpie 50 Member today- help us fund new ground lighting!

To join all you have to do is pledge \$20/week for 52 weeks via direct debit

**Get In Quick- Tickets Won't Last Long
Call Jono To Register Yours Today - 0417791534**

Welshpool Op Shop & Nursery

Monday to Friday

10am – 3pm

PH: 0474 591 014



RTC Rooms for Hire

Office Hire : \$11 per hour

\$33 per day

Consulting Room : \$27.50 per day

Meeting Room Hire : \$38.50 per day



West Gippsland
Libraries

Located at the Welshpool RTC

Click and Collect – Wednesday's
12noon-2pm



WELSHPOOL POST OFFICE

20 Main Street Welshpool Phone: 5688 1419

Email: welshpoolpostal@bigpond.com

12v John Deere Ride Ons

Layby Now For Christmas While Stocks Last



 Find us on
Facebook


afterpay

Port Welshpool & District Maritime Museum

“The Importance of Our Hospitals and Health Care Workers”

The “Janet Iles” rests proudly in the grounds of the Museum at the corner of Turnbull & Townsend Streets, Port Welshpool where she holds much history of years gone by. One of the many occasions she was involved with was raising money for the Yarram hospital. With many dressed in their finery a small fee was paid for “A trip on the Briny” with all monies raised going to the hospital. As we take a look back to hospitals, we smile with pride for the great advances that has been made to improve our health and keep us enjoying life longer.

The Toora Bush Nursing Hospital was also a very important hospital in our area. Remember “egg day” the day when we took eggs to school? The eggs were collected and counted from each school and donated to the hospitals. Quantities from each school being published and you were always eager to see how you fared against a nearby school of your similar size.

Once, hospitals had meals cooked on the premises. The cook in charge, mainly women, oversaw meals prepared and meals cooked all under the tag of home cooking. At the time that’s all we knew, take away as we now know wasn’t an option. Much staff was needed to have the hospital kitchen working like a well-oiled machine seven days a week. When you entered the building you often got the waft of delicious food cooking whether it was for the main meal or biscuits to have with a morning or an afternoon cuppa. The veggie garden out the back was to insure all produce was fresh and to compliment the meal. Today it’s a bit different, many hospitals have meals prepared off the premises and transported in, with only a skeleton staff working weekends meals are very simple on these two days.

A lot has changed with the hospital work force. **The Matron**- she was in charge, and in charge she was. Rules were there for our good health and NOT to be broken. She had a huge responsibility and she wore it. As she walked around checking on her charges you knew she was not to be disobeyed, in her well starched white uniform she checked on every fine detail. You often heard the whisper “Matron is Coming” **The nurses** also in their well starched uniforms were very easy to define. Then there were **the cleaners** and clean they did, within an inch of their lives, floors you could eat off, [so to speak] and not a speck of dust seen.

Visiting hours: Afternoon 2pm -4pm and Evenings 7pm-8pm, and not a minute before and not a minute after, or you could risk being locked in. Flowers were looked after as if they were show pieces and were removed from rooms overnight. In the very early 50’s I remember “going to see”, my Uncle in the Toora Hospital. Children not being allowed in the ward I had to wave to him from the outside window, thank goodness this changed. Now a patients furry friend is allowed in if it is thought it may help with the patients recovery.

Sadly funding has always been an issue for this most important part of our lives. When buildings become tired and outdated many hospitals are sold, so that the prime land can be developed for other businesses. The worry when this happens in country areas is the distance needed to get help. When Toora no longer operated as a hospital and was sold and Yarram focused on aged care, Foster Hospital became a head focus for health. With funds needed to upgrade tired equipment and a growing community a lot of pressure is put on the doctors and staff. To these special people who work tirelessly, sometimes under trying conditions as they wear their titles proudly for our health, we say “Thank You”

Welshpool
Supermarket
& Café

'Home Made Cakes'



OPEN 6 DAYS A WEEK

Monday to Friday: 9.30am-4pm

Saturday: 9am-3pm

Sunday: Closed

'Call in for a Latte'
Ph. 03 5688 1452

FOSTER SEAFOODS



35 Main Street, Foster

Ph: (03) 5682 2815

With catches of Inlet fish arriving within the shop on a daily basis and our vessels returning from extended trips into Bass Strait, you can be assured that the quality is second to none.

We also have an extensive list of products with very competitive prices.

Danny O'BRIEN MP
Member for Gippsland South

54B Cunninghame St, Sale VIC 3853
03 5144 1987
danny.obrien@parliament.vic.gov.au
www.dannyobrienmp.com.au

A better deal

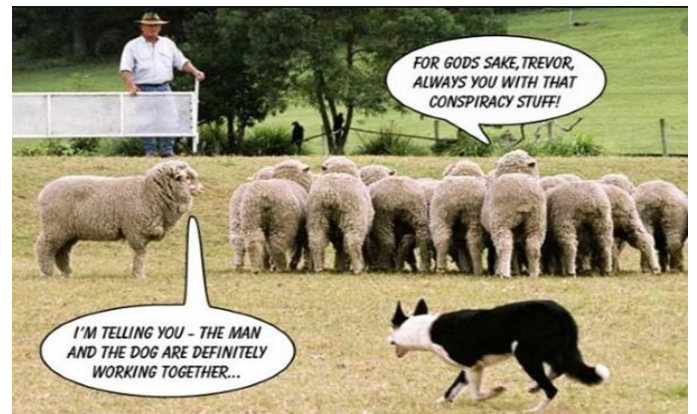
for Gippsland South

Funded from Parliamentary Budget

[f](#) [t](#) [i](#) /dannyobrienmp

Image by Canva

*Kindness
is free.
Sprinkle it
Everywhere!*



Takeaway meals & drinks
available now every Thur-Sun
Call 5688 1309 to place your order

Bistro & Bar Meals:
Open From Thur 15th October
Thur - 5pm-8pm
Fri-Sun 12noon-2pm & 5pm-8pm

Main Street Welshpool, Vic 3966

Contact: **SHANE**

Ph/Fax: (03) 56881309

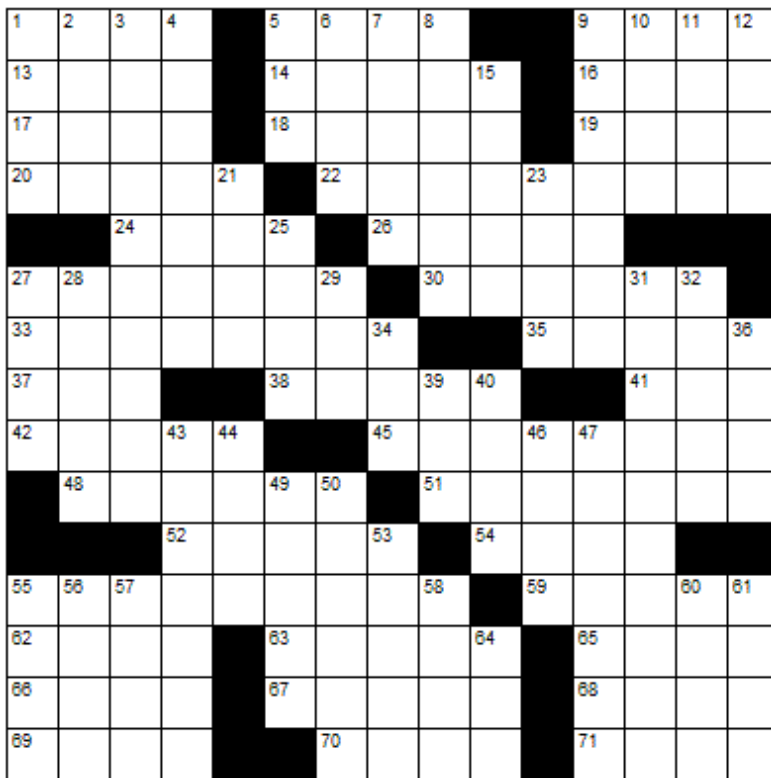
**BUTTERFLY
PASSENGER SERVICE**

Butterfly Passenger Service is available to all South Gippsland residents who have to travel to shops or to attend medical appointments during COVID 19 restrictions.

If you don't have your own transport and need to be somewhere please call Kerry on 0411 334 236 to discuss your travel requirements and get a quote.



CROSSWORD



Down

1. Mouthful
2. Dwarf buffalo
3. A type of lender
4. Maintain
5. Explosive
6. Lion sound
7. Overgrown with ivy
8. Slogan
9. Prominent
10. Atop
11. Feudal worker
12. Accomplishment
15. Play a guitar
21. Cry of pain
23. Mimics
25. French for "Head"
27. Resorts
28. One on each hand
29. Accomplished
31. Defensible
32. Small finch
34. C
36. Spanish lady
39. Russian fighter
40. Once more
43. Opponent of technological progress
44. 53 in Roman numerals
46. Not barefoot
47. A piece of ground
49. Statistics
50. A copy from an original
53. Aspirations
55. Happy
56. Gray wolf
57. Cards with 1 symbol
58. Seating sections
60. Bend
61. Words
64. South southeast

Across

1. Openings
5. Snip
9. Sought damages
13. Two-toed sloth
14. Exploded stars
16. Church alcove
17. Not high
18. Corrupt
19. Solitary
20. Undergarment
22. Taught new skills
24. Decoy
26. Stone fruit
27. Like a zebra
30. Requital
33. Relating to speech sounds
35. Horse
37. Arctic bird
38. Swelling under the skin
41. To and ____
42. Aroma
45. Famous genius
48. Contusion
51. Tartarus
52. Trench
54. Unit of language
55. Pugilist
59. Outline
62. Hubs
63. Errata
65. Competent
66. Assist in crime
67. Expels
68. Holly
69. An amount of medicine
70. Anagram of "Sees"
71. Following



LAST MONTHS CROSSWORD RESULT

S	O	L	V	E		C	L	O	T		W	A	D	S
A	R	I	E	L		L	X	X	I		O	G	E	E
N	A	I	R	A		E	V	E	N		O	R	C	A
G	L	I	T	T	E	R	I	N	G		D	E	A	R
						I	R	K			L	A	P	E
T	I	P	T	O	E		A	F	I	R	E			
O	C	E	A	N		C	R	A	N	K	C	A	S	E
E	K	E	S		S	H	R	U	G		K	N	O	W
D	Y	S	T	O	P	I	A	N		G	E	O	D	E
						E	D	I	T	S		H	A	R
						S	A	F	E	R		F	E	Z
P	E	R	U			I	N	C	I	N	E	R	A	T
O	P	A	L			T	O	R	N		T	O	R	U
M	A	R	L			E	P	E	E		T	A	C	T
P	L	A	Y			D	E	E	S		E	N	S	U

Sponsored by: **Welshpool Supermarket**

Entries must be received before

16th October, 2020

All correct entries will be put into a hat and the winner will be drawn by Supermarket staff. No correspondence will be entered into etc.

Please remember to double-check your spelling.

Remember to include your name, contact number and date on your returned entry, Thank you.

Winner of the August Crossword:

Bill Matthews



Community Group Listing

***Welshpool & District Advisory Group** – Contact: Linda Razinger 03 5688 1051

***Welshpool Fire Brigade** – training every Thursday night 7.30pm

***Welshpool Recreation Reserve** – Contact: Madelaine Mason 0409 976 211

***Welshpool Basketball Association** – Contact: Madelaine Mason 0409 976 211

***Prom Coast Soccer Club** – <http://www.promcoastsoccerclub.com.au/>
Contact: Shellie Cashmore 0419 322 384

***Welshpool Memorial Hall** – Contact: Alan O'Neill 5688 1419

***Friends of Agnes Falls** – <https://www.facebook.com/FriendsOfAgnesFalls/>

***Port Welshpool Fishing Club** – Contact: Vern Suckling 5688 1554

***Port Welshpool Working Group** – Contact: Alma Mattingley 0427 310 599

***Welshpool & District Playgroup** – <https://www.facebook.com/WelshpoolPlaygroup/>

***Welshpool & District Horticultural Society** – meeting every 2nd Wednesday of the month.
Contact: Fran Grylls Ph. 5184 1376

***Port Welshpool & District Maritime Museum** – Email: pwmuseum@gmail.com
Contact: Fran Grylls Ph. 5184 1376

***Port Welshpool Coast Guard** – Contact: Peter Carrolan 0417 372 059



Community Bank
Toora and Foster

Need help with uni or TAFE costs?

Applications are invited from eligible students in the local district attending university or TAFE for the first time in 2021.

Scholarship name: Toora & Foster Community Bank Llew Vale Scholarship

Applications are now open.

bendigobank.com.au/scholarships



Community Enterprise Foundation™

Community Bank Scholarships will be funded from management accounts of the Community Enterprise Charitable Fund ABN 12 102 649 966 (the Fund). The Bendigo Centre, Bendigo VIC 3550, Sandhurst Trustees Limited ABN 16 004 030 737 AFSL 237906, a subsidiary of Bendigo and Adelaide Bank Limited ABN 11 068 049 178, AFSL 237879, is the trustee of the Fund. 1409006-1409008 OUT_1478463

Toora & Foster Community Bank Llew Vale Scholarship

-The Scholarship aims to assist high achieving and highly motivated local students who have been offered a place at an Australian University, TAFE Institute or College for the first time and are experiencing financial and/or social challenges.

-Duration 2 years

-Award Value \$5000 per annum

-Application Dates – Open 21.9.20
Close 24.1.21

-For further information brochures are available at the Toora and Foster Branch and the Welshpool Agency, or visit the website bendigobank.com.au/scholarships

-If you still have a query, please contact Toora & District Community Branch Ph 56862000 or Foster Branch Ph 56822287

LOCAL SERVICES.....



M & C Doran
Quality is our speciality

Michael Doran
Qualified Carpenter & Joiner

16 Turnbull Street

Port Welshpool VIC 3965

Email: buildingservices@mcdoran.com.au

Ph. 03 5688 1229

Mb. 0429 038 409

Fax. 03 5688 1377



John Hoy
Trade qualified Farrier
(25 years experience)

0447 229 390



Maintenance & Repairs to...

TRUCKS*TRACTORS*MACHINERY*PASSENGER & FOOD TRANSPORT VEHICLES

Ian Dubignon

M. 0448 761 642



Liz O'Neill
Proprietor

Styling on Stanley
Unisex Salon

46 Stanley Street,
Toora
2962.
56862328

Wednesday, Thursday, Friday 9am – 5pm
and Saturday

**Lawn mowing & Maintenance, Rubish removal, Painting
Window cleaning, Gutters cleaned, High pressure washer**

Lawn mowing & Maintenance

Free Quotes reasonable rates local tradesman



Dave Mcleish
Port Welshpool

0417 538 683

davemcleish@live.com.au



FOR ALL YOUR TREATED PINE NEEDS

POSTS

SAWN TIMBER

DECKING

CUSTOM TREATING

SLEEPERS

NUTS AND BOLTS

PALINGS

AND MORE

SOUTH GIPPSLAND HIGHWAY, ALBERTON, VIC, 3971

Ph (03) 5183 2437

Fax (03) 5183 2659

Email sales@albertontimber.com.au

CONCRETER



SOUTH GIPPSLAND CONCRETE
ALL THINGS CONCRETE
ON-SITE TIMBER MILLING

0400 840 729

WWW.SGCONCRETE.COM.AU

TV & DATA SYSTEMS

Digital Antennas, TV wall mounts, Data &
Computer outlets, Home Theatre, Hidden
Wiring, Networks, Offices, CCTV, Repairs,
Equipment Installations

Licensed Cable Installer

Domestic, Commerical & Industrial

Steve Mooney 0427 257 222

SOUTH GIPPSLAND SEPTIC TANK CLEANING

Also Portable Toilets Hire

Call Chris Whittle

(03) 5688 1572



Kirwan Builders

TK Construction

"for all your building needs"

TK Construction – Michael Kirwan

6565 South Gippsland Highway HEDLEY VIC 3967

P: 03 5184 1223 | M: 0428 911 900

E: kirwanbuilders@gmail.com

HIA MEMBERSHIP: 813 711 | DB-U: 20399 | A.B.N: 40 896 158 242

ANTHONY BRAVINGTON

Cleaning & Property Maintenance Contractor

- Commercial Cleaning, Domestic Cleaning and all types of Property Maintenance
- Accommodation Contracts
- Office Building Contracts
- Retail Shops Contracts
- School Cleaning Contracts
- Builders Cleans
- All Property Maintenance etc
- Window Cleaning
- Carpet Steam Cleaning

THURSDAYS & FRIDAYS ONLY

1 bedroom house	\$70
2 bedroom house	\$90
3 bedroom house	\$120
4 bedroom house	\$150

Call Anthony for all your cleaning needs

Mobile: 0418 146 986

Email: anthonybravington@bigpond.com



WASTE DISPOSAL

- Permanent bins & clean up skips
 - Commercial, household or farm waste
 - Cardboard recycling
 - Weekly, fortnightly, monthly
 - 1.5M3 OR 3M3 BINS
 - Locally owned & operated
- CALL OR EMAIL FOR A QUOTE

PH: 03 9794 5722

www.jjswaste.com.au

operations.melbourne@jjswaste.com.au

*"Your local name
in the waste game"*



WeighLess With Julie Ray

Weight Loss Consultant
Specialising in Healthy Eating

RED ROOF STUDIOS
125 Commercial Road
YARRAM VIC 3971

PHONE 0429832346
TO MAKE AN APPOINTMENT

Head to Health

Are you looking for
mental health support?



Go to headtohealth.gov.au to find online
and phone services and information.



Australian Government
Department of Health

Available at the Welshpool Op Shop

— FARM —
FRESH

★ EGGS ★
\$6 Dozen

Spring Challenge



April	chick	fog	Memorial Day	spring
April Fools' Day	Children's Day	garden	nest	sprout
Arbor Day	Cinco de Mayo	gosling	Passover	stem
awaken	cloud	grass	picnic	storm
baby	cocoon	green	piglet	sunshine
baseball	colt	grow	plant	thaw
bee	daffodil	hatch	puddle	thunder
bird	dandelion	insect	rainbow	tulip
bloom	dig	iris	raincoat	umbrella
blossom	duckling	kite	rainy	violet
bug	earth	lamb	roots	warm
bulb	Earth Day	leaf	season	water
bunny	Easter	lightning	seed	weather
butterfly	egg	lilac	shovel	weed
colf	emerge	March	shower	wind
caterpillar	flower	May	soil	worm

© 2008, The Holiday Zone. All Rights Reserved.

<http://www.thefestivalzone.com/>



FINALLY MY
WINTER FAT
IS GONE.
NOW I HAVE
SPRING ROLLS.

AUGUST SOLUTION

2	9	4	7	1	8	5	3	6
8	3	5	4	9	6	1	2	7
6	1	7	3	5	2	4	8	9
4	2	1	6	8	7	9	5	3
5	6	3	9	2	1	8	7	4
7	8	9	5	3	4	2	6	1
9	7	6	8	4	5	3	1	2
3	5	2	1	7	9	6	4	8
1	4	8	2	6	3	7	9	5

LIARP

--	--	--	--	--

RDSIB

--	--	--	--	--

SUBB

--	--	--	--

COORLLUF

--	--	--	--	--	--	--	--

FOSRELW

--	--	--	--	--	--	--

SAGRS				
-------	--	--	--	--

RENGE					
-------	--	--	--	--	--

MHRAC

--	--	--	--	--

MYA			
-----	--	--	--

BANIWRO

--	--	--	--	--	--	--

NIRPSG					
--------	--	--	--	--	--

NUS	
-----	--

MARW

--	--	--	--

SPRINGTIME

Unscramble each of the words on the right side of this page, then copy the letters from the numbered boxes to the boxes below to find the hidden phrase.



POPULAR SPRINGTIME PHRASE

Figure 1 displays six number lines arranged in a 2x3 grid. Each number line has five equal intervals, and the first interval is shaded gray. The number lines are labeled with their starting and ending values: 1 to 5, 6 to 12, 13 to 17, 18 to 20, 21 to 27, and 28 to 32.