

Recently inducted into the National Road Transport Hall of Fame in Alice Springs, Peter Stoitse will be remembered for his many achievements here in Welshpool and the wider community

# Peter STOITSE

Peter Stoitse was born in 1939 in Balook, Victoria, not long after his parents Athanas (Tom) and Mitra, along with his sisters, immigrated from Macedonia. Working on the family dairy farm, young Peter developed a love for machinery. His start in trucking began when he purchased his first truck, an International he had found parked under a tree. On seeing the truck, his father commented "You'll never make a living out of that!" On his very first trip, he did in four tyres but he persevered, picking up local work.

When oil was discovered in Bass Strait, Peter saw a huge opportunity and expanded his business, carting freight to support the oil and gas operations. By 1974, Barry Beach Marine Terminal was booming and his trucks were travelling as far afield as outback Western Australia and Queensland. Peter expanded his services to include; tankers carting bulk liquids such as fuel and glycol, carting general freight and also a fish run from the local ports to the Melbourne Fish Market. In 1993, he went back to his dairy farming roots, working in the milk industry with some linehaul runs that eventually led to farm pick up services.

Peter was supported throughout by his wife Norma, sons Steven and Terry and daughter Sandra. The business, Peter Stoitse Transport Pty Ltd, has grown to include eight depots across Victoria, with the Head Office in the town of Welshpool. The business operates a fleet of over 120 vehicles and employs 300 staff. After 50 years, it is still very much a family affair.

Sadly, Peter passed away whilst taking a well-earned break in Queensland in 2012 at the age of 73.

Regardless of how much he achieved, success never changed Peter. He always made time for his family. He was the boy from the bush who liked to work hard and play even harder. His word was his bond and a handshake, a binding contract. He is credited with giving many their first go in the industry and formed lifelong working relationships with all he met. Peter worked hard to achieve his success and this is reflected in his business legacy.

**Inducted in 2021**



## Disclaimer

This newsletter is an independent self-funded publication produced by staff and volunteers of the RTC and it does not reflect the opinions of the Committee members, South Gippsland Shire, or the Department of Planning and Community Development.



## TRADING HOURS

MON - FRI

10.00AM - 3.00PM

- WELSHPOOL COMMUNITY LIBRARY
- BENDIGO BANK AGENCY
- CENTRELINK AGENCY
- V/LINE TICKETING OFFICE
- ROOM HIRE AVAILABLE
- PASSPORT APPLICATIONS
- COPY & PRINT SERVICES

### Other services by appointment only

- Diabetes Clinic – 5683 9780
- Gibson Accounting – 5176 2031
- Royal Flying Doctors – 03 8412 0480



## Centrelink Website

The Centrelink website ([www.centrelink.gov.au](http://www.centrelink.gov.au)) has been incorporated into the Department of Human Services website [humanservices.gov.au](http://humanservices.gov.au). The new site is a convenient, single entry point for health, social and welfare payments and services.

Any questions regarding your payments or entitlements, this would be your first port of call.

- ***You are able to register online and access details of your account.***
- ***Find out the latest information regarding services.***
- ***Calculations can be done to work out family assistance.***
- ***Access forms and brochures.***

A touch screen computer is available at the Welshpool Rural Transaction Centre for your use.

Staff at the Centrelink agency are able to assist you with registration etc.



## VLIN BUS SERVICES

**Purchase tickets at the  
Rural Transaction Centre or  
collect a VLINE Bus Timetable**

## DIABETES CLINIC

If you would like an appointment  
or have any queries, please contact

**Foster Community Health on  
03 5683 9780**



Gibson Accounting

Kieran Olree

PH: (03) 5176 2031

Fax: (03) 5174 6313

101 Hotham Street  
Traralgon, Vic 3844

Email: [kieran@gibsonaccounting.com.au](mailto:kieran@gibsonaccounting.com.au)

Kieran Olree is at the RTC every Wednesday

By appointment only - **(03) 5176 2031**

For more information and all the latest tax  
updates and handy hints for tax time,  
please visit Gibson's website:

**[www.gibsonaccounting.com.au](http://www.gibsonaccounting.com.au)**

# Port Welshpool Fishing Club

It has been a very challenging year, with a very wet, cold winter, plus Covid shutting down our club functions. The warmer weather is slowly returning so a few members have been able to get out on the water and catch a fish or two. As the weather improves we hope you have the opportunity to get back out there. Don't forget to weigh those fish in and let's get the season rolling.

We have a tentative date of **30<sup>th</sup> October for our AGM**. Due to current restrictions we cannot lock this date in, we will advise members if this date needs to change.

Other dates to remember for our functions:

- 4<sup>th</sup> December Club Christmas Dinner
- 22<sup>nd</sup> January Barbecue
- 19<sup>th</sup> February Dinner and get together
- 11<sup>th</sup> March Dinner and get together
- 21<sup>st</sup> May Dinner and get together

2021/22 Fishing Season is now open – Fees are due and payable by eft or cash. Please contact Alma or email [PWFC2021@outlook.com](mailto:PWFC2021@outlook.com)



During the month of November the Port Welshpool Fishing Club will be conducting a fishing competition with the Port Albert Fishing Club. For details contact the email above.

Thanks to our members continued support, our club had a successful year financially. As a non for profit club the committee agreed to return some money back into the community. We have selected five local community clubs and donated \$400 to each of these clubs.

- Port Welshpool Maritime Museum
- Welshpool Recreation Reserve
- Welshpool Basketball Association
- Welshpool and District Playgroup
- Welshpool CFA

Also the Ward family had a devastating fire at their Welshpool property recently. Both the Port Welshpool and Port Albert Fishing Clubs got together to replace some fishing gear that was lost so the family can continue their favourite pastime together. Thanks also to Tania and Eddie Fowler for donating a chainsaw for Charles which was also lost in the fire.

We look forward to catching up with you all again soon. New members welcome, we are a family club and would love to see some new families and their children joining us.

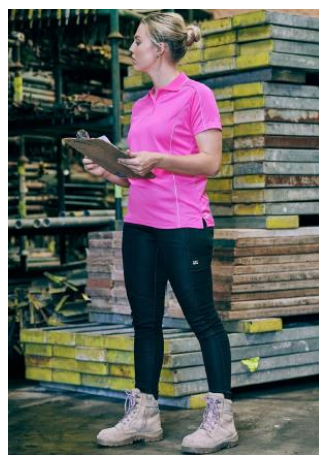
Stay safe both on and off the water. Check all your safety gear. Good luck, tight lines.



Ronnie Hunt presenting David Grylls from the Welshpool CFA



Jenny Horner presenting Madelaine Mason on behalf of the Welshpool Recreation Reserve and Welshpool Basketball Association



### Women's Flx & Move Jeggings

RRP \$65.95 **RTC price \$55**

Size 6 – 24 Available in denim or black

Stock arriving soon

**14 Main St Welshpool or phone 56881051**



### RTC Room for Hire

Office Hire : \$11 per hour

\$33 per day



The Welshpool Agency hours remain as  
Monday to Friday 10am to 3pm

### Lions Club Christmas Cakes & Puddings

Available at the RTC

Large Cake \$17

Small Cake \$13

Pudding \$13

Snack size cake \$2



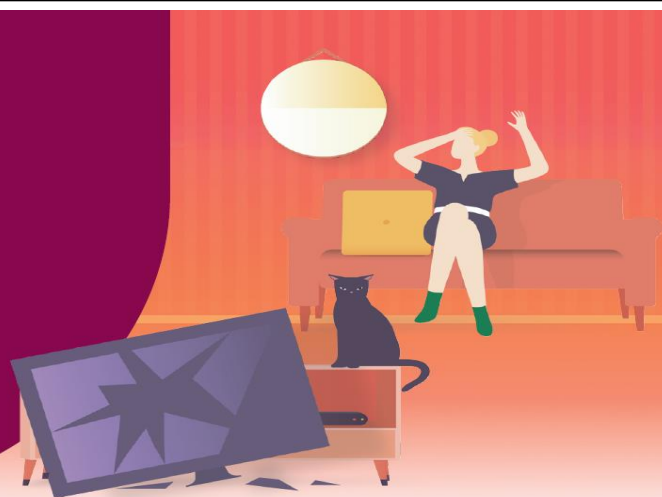
## Home & contents insurance

The unexpected happens.

With Bendigo Bank, you'll have home and contents insurance to rely on.

**To protect what matters to you, search Bendigo Bank Insurance.**

 Welshpool Agency 5688 1051



Bendigo and Adelaide Bank ABN 11 068 049 178 AFSL 237879 acts under its own Australian Financial Services Licence number and under an agreement with a range of insurers. See target market determination: [bendigobank.com.au/TMD](http://bendigobank.com.au/TMD). A1404742 OUT\_3859148, 07/10/2021

## Welshpool Op Shop & Nursery

Monday to Friday  
10am – 4pm  
Saturday 10am – 2pm  
PH: 0474 591 014



The Welshpool Op Shop is looking for Volunteers  
Please enquire at the Rural Transaction Centre



Available at the Welshpool Op Shop

At the RTC during lockdown periods

— FARM —  
**FRESH**  
  
★ **EGGS** ★  
\$6 Dozen



Reusable 'Shop Local South Gippsland' bags  
are available at the Welshpool Op Shop.  
The Shop Local South Gippsland promotion  
has been developed as part of the South  
Gippsland Shire Council's Covid-19  
Community Support Package.

**ALL LINEN – HALF PRICE**

Sheets, pillow cases, doona sets  
Large variety of sizes and designs



On behalf of the Welshpool and District Advisory Group and the community of Welshpool we would like to wish Faye Jenkins farewell and Good Luck in her retirement.

Faye has been working in the Rural Transaction Centre for 9 years. Faye has been a valued employee over the years and continues to serve the community as a committee member of the Welshpool and District Advisory Group



## Welshpool & District Horticultural Society

Unfortunately due to the uncertainty of Covid restrictions our Spring Show has been cancelled.

However with the fantastic success of last year's plant sale, we will be running the sale once again.

### PLANT SALE

Saturday 27<sup>th</sup> November  
(tentative)

Welshpool Hall

A wide range of fantastic plants  
and handmade wooden planter  
boxes available

Times and date to be confirmed



Open Thursday to Monday 10 - 4  
Phone 0400 110 318

the **Olive Branch** Prem Country

**STEP BACK IN TIME - 1890's to 1970's**  
**WHAT A GREAT DELIGHT !!**



Drinks and Snacks.  
Coffee and Cake

Find us on  
**Facebook**

Retro, Collectables and Bric a brac  
We Buy and Sell

Presenting  
local products  
Honey, Jams,  
Gift Ideas etc.  
Fresh Produce  
when  
available



## Mount Best Community Hall

The Mount Best Community Hall is pleased to advise that we now have a defibrillator which is available 24/7 installed in a box in front of the hall.

The committee would like to thank our major sponsor Bendigo Community Bank Toora and Foster and the South Gippsland Shire Council for grants that assisted the purchase of this unit. We would also like to thank Randy Trayler from RST Group for the donation of the box to hold the unit.

This defibrillator will be registered with Ambulance Victoria so the operator will be able to direct the caller to it if it is the closest unit to the caller's location. The location of the unit will also appear on Ambulance Victoria's web page.

## Welshpool & District Primary School

### Welcome back for Term 4!

It has been wonderful welcoming back all students in P-2 over the last week. All students have started to settle into school and our classroom routines. Over the last week we have been busy starting our Sounds Write program and learning about VCC and CVCC words. We have been revising our sounds and working on breaking down the different sounds in new words and changing their position to alter the word. We have also been very busy learning about measurement in maths, completing lots of fun fine motor craft activities and playing partner and small group tasks and games.

Miss Parnall



All students in P-2 have been working during our Sounds Write sessions.



In the afternoon we have been completing group rotation activities. These activities focus on building fine motor skills or working as a team.



P-2 students have loved exploring our new "Dinosaur Dig" play space. In this space students have been learning about dinosaurs, palaeontologists, the Jurassic period and fossils.



**E.W. & H.P. FOWLER  
WELSHPOOL OUTDOORS &  
ORIGIN GAS SUPPLIES**

**19 MAIN STREET  
WELSHPOOL VIC 3966  
PH: 0356881304  
EMAIL: welshpooloutdoors@bigpond.com**

**FREE!**  
**45L ICEBOX AND  
BUCKET HAT\***

\*Offer available 01/09/2021 - 31/01/2022 on the following Husqvarna models:  
TRACTORS: TS242TXD, TS248TXD, TS354, TC242TX,  
ZERO TURN MOWERS: Z242E, Z242F, Z248F, Z254F.  
While stocks last at participating Husqvarna Dealers only.



VALUED  
AT OVER  
**\$270\***

**L TS242TXD**

Kawasaki FR Series V-Twin - 21.5hp - 42" Cutting Width  
Ideal for regular use in medium-sized to large gardens. It is  
characterized by the 107cm  
wide ClearCut™ cutting deck,  
the intelligent, user-friendly  
design and the simple  
starting process by  
turning the key.



**\$6,719** RRP

**FREE!  
ICEBOX AND  
BUCKET  
HAT\***

**L TS248TXD**

Kawasaki FR Series V-Twin - 23.0hp - 48" Cutting Width  
A powerful and comfortable side discharge tractor with sturdy  
ClearCut™ deck for medium to large-sized gardens.  
Hydrostatic with automatic  
transmission for easy,  
trouble-free operation that  
gives superior traction  
in slippery conditions  
and slopes.



**\$7,245** RRP

**FREE!  
ICEBOX AND  
BUCKET  
HAT\***

**Have you been to Agnes Falls recently?**

Only 10km from Welshpool, a spectacular site right  
here in our own backyard.



**APPLY  
NOW**

Community Bank · Toora & Foster

**Need help with uni or  
TAFE costs?**

Applications are invited from eligible students in the local district attending university or  
TAFE for the first time in 2022.

Applications open: Monday 13 September.  
Search for: Toora & Foster Community Bank Llew Vals Scholarship

[bendigobank.com.au/scholarships](http://bendigobank.com.au/scholarships)

**Bendigo Bank**

Community Enterprise Foundation™

Community Bank Scholarships will be funded from management accounts of the Community Enterprise Foundation Fund ABN 13 122 040 988 (the Fund). The Bendigo Centre, Bendigo VIC 3550, Bendigo  
Business Limited ABN 15 004 122 737 AF 51, 237006, a subsidiary of Bendigo and Adelaide Bank Limited ABN 11 988 048 110, AF 51, 227070, is the trustee of the Fund. 1403006-1403018 CUC 2402100



## **WELSHPOOL POST OFFICE**

20 Main Street Welshpool Phone: 5688 1419

Email: [welshpoolpostal@bigpond.com](mailto:welshpoolpostal@bigpond.com)

### **Pre Christmas Shop-a-tunity**

We will be holding a **Shopping Event** on **Saturday 6<sup>th</sup> November**. We will be **open 9am - 2pm**  
*Get your jingle on, and bring along a shopping bag !!*  
Toys and gifts available for all ages.

John Deere, plus other licensed toys, even gifts for  
your pet !!!

Specials on the day, and door prizes !!!

Shelly and Trevor from Purely Goats Milk will be  
available to answer questions and give advice on the  
Purely Goats Milk product range

Contact us for further details, or see the **Shopping  
Event posted on our Facebook Page.**



Find us on  
**Facebook**

## Port Welshpool and District Maritime Museum

The Footy Season.....This year the AFL footy season has been a bit topsy turvy but whatever team you follow it has kept us die hard football followers with an interest as we travel these very uncertain times together. For those of you that say you are not interested, you must have had a peek, to see what all the excitement was about.

As I write this, Melbourne are still celebrating their great win after so many years of getting it together. Footy has great memories for me as I was brought up on a diet of the red white and blue, with my dad being as passionate as he was for the Welshpool Bulldogs.

The Museum has many photos and memorabilia in its keeping to show the history of the time when winter in the district meant football each Saturday for the Alberton League. Towns that fielded a team became deserted for the support of the colours each team wore. Many miles were travelled so all could be achieved. Farmers of the district being part of a team, would make sure they had someone organised so the cows could be milked in their absence, and you would see family members leaving before the game had finished so as to get the job done, which was a bit hard if the game was close. The prisoners of Won Wron Prison could not help but be noticed as they arrived in a big van to play part of the Won Wron team. For them I am sure they were only too happy to have some normality in their lives in the great outdoors as they did their time for whatever crime they had committed.

Each Saturday a Taxi driven by Jim Daly drove from Melbourne dropping off an umpire from the A.F.L.U.A. for each home game. Back then league umpires got experience in the country areas before they progressed to the big league. At Welshpool the car was met by my dad, where Jim refuelled at Tibballs garage and we took the umpire on to Port Welshpool [now the museum] for a lunch of the best Steak that money could buy from Arthur Sutherland's corner Butchers shop, before the game was played. Over the years we met some lovely people with many bringing their families back to the port to holiday and have a trip out on the Janet Iles. I also spent many a school holiday with some of these families in Melbourne, but I was always happy to get away from the hustle and bustle of the big smoke and back to the port. Their trip out fishing meant that a feed of fish was taken back to Melbourne to enjoy. Even though each umpire that officiated a game for the Alberton League on the day would receive a crayfish, when in season, for which dad became known to the footy world as bribing the umpires for Welshpool to win, but in dad's eyes this was good old country hospitality and this had been a family practice for the family for many years since his dad had been the President of the Welshpool Club in the early 1900's. An incident that brought a smile to our faces was when dad enquired of a copper that was looking abandoned at the Devons rooms, he received a letter back from the committee saying he was welcome to the copper but as long as he wasn't cooking crays in it for the umpires. Dad was rewarded for looking after the umpires, as he called it, when he was honoured with a life membership to the AFLUA as it was then known and very proudly he wore his badge to each match and attended the umpire's dinner at the end of each AFL season. Another incident that comes to mind was at a Woodside home game and being the last home match of the run, the crowd were very vocal as Welshpool were winning well. They started yelling "How many crays are you getting today umpy" to such a point that Jim parked the taxi with the boot open for all to see that it was empty.



Autographed board dad got signed by many umpires attending a dinner year unknown

The museum is still closed due to Covid restrictions but we would love to see visitors when Covid restrictions are lifted



Services Australia

September 24 at 10:30 AM ·

There's more than one way you can show proof of your COVID-19 vaccinations.

Once you've been fully vaccinated, you'll be able to access your COVID-19 digital certificate online through myGov.

If you have Medicare linked to myGov, we'll notify you that your certificate is available, once your provider has reported both vaccinations to the Australian Immunisation Register (AIR).

Your immunisation history statement will show all vaccinations you've had that are recorded on the AIR – including your COVID-19 vaccinations. You can use your immunisation history statement as proof if you've had at least one COVID-19 vaccine.

Find out more here: [servicesaustralia.gov.au/covidvaccineproof](https://servicesaustralia.gov.au/covidvaccineproof)

**medicare**

## Get proof of your COVID-19 vaccinations

### First dose

Immunisation history statement via myGov or the Medicare app



### Fully vaccinated

COVID-19 digital certificate via myGov or the Medicare app

Add it to your Apple Wallet or Google Pay.



[servicesaustralia.gov.au/covidvaccineproof](https://servicesaustralia.gov.au/covidvaccineproof)

Information above from the Service Australia Facebook page September 24<sup>th</sup>

## FOSTER SEAFOODS



35 Main Street, Foster

Ph: (03) 5682 2815

With catches of Inlet fish arriving within the shop on a daily basis and our vessels returning from extended trips into Bass Strait, you can be assured that the quality is

second to none.

We also have an extensive list of products with very competitive prices.

## Danny O'BRIEN MP

Member for Gippsland South

54B Cunninghame St, Sale VIC 3853

03 5144 1987

[danny.obrien@parliament.vic.gov.au](mailto:danny.obrien@parliament.vic.gov.au)

[www.dannyobrienmp.com.au](http://www.dannyobrienmp.com.au)

*Working for Gippsland South*

[f](#) [t](#) [i](#) /dannyobrienmp

**NATIONALS** for Regional Victoria



### Bistro & Bar Meals:

Wed - Sun - 5pm-9pm

Fri-Sun 12noon-2pm & 5pm-9pm

### Takeaway meals & drinks

Wed-Sun 5pm-9pm

Fri-Sun 12noon-2pm & 5pm-9pm

Call 5688 1309 to place your order

Bar & Bottle Shop OPEN 7 Days a week

Main Street Welshpool, Vic 3966

Contact: SHANE

Ph/Fax: (03) 56881309

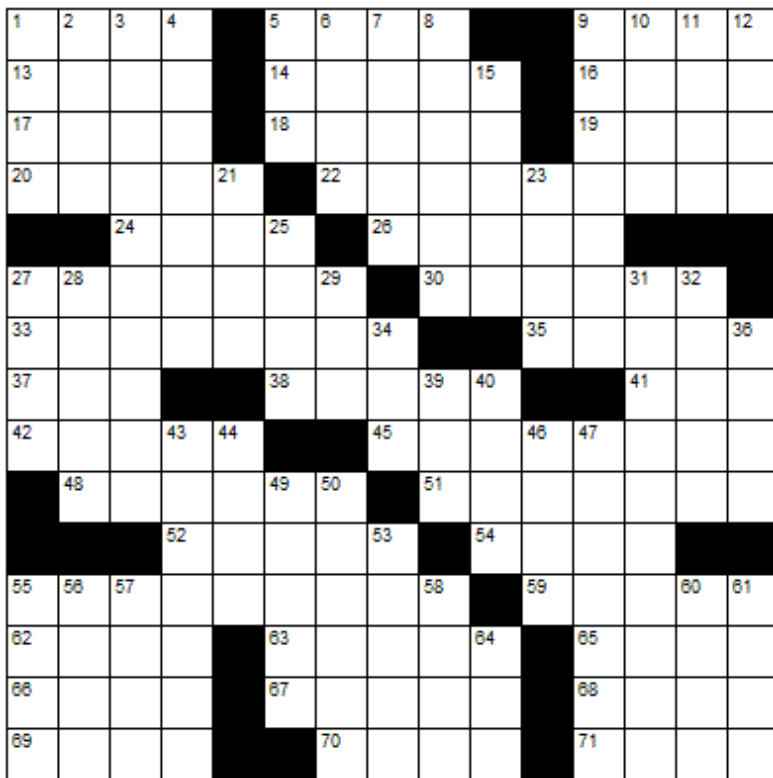
## BUTTERFLY PASSENGER SERVICE

Butterfly Passenger Service is available to all South Gippsland residents who have to travel to shops or to attend medical appointments during COVID 19 restrictions.

If you don't have your own transport and need to be somewhere please call Kerry on 0411 334 236 to discuss your travel requirements and get a quote.



# CROSSWORD



## Down

1. Numbskull
2. Smell
3. Crisp round cookie
4. Approve of
5. Louisville Slugger
6. Cain's brother
7. Not our
8. A bed of rich soil
9. Spiral noodles
10. Weightlifters pump this
11. Largest continent
12. Gangly
15. Rhinoceros
21. Layer
23. Sunrise
25. Collections
27. Parts of aprons
28. Colonic
29. Japanese apricot

31. Hasten
32. A garment
34. Morning moisture
36. Not difficult
39. Woman
40. Prima donna problems
43. Patron
44. Inheritor
46. Nestling hawk
47. Anagram of "Chatter"
49. Pretext
50. Wound
53. Greek letter
55. Anagram of "Meat"
56. By mouth
57. Killer whale
58. Close violently
60. Dash
61. Dampens
64. South southeast

## Across

1. Venician magistrate
5. Shower alternative
9. Decree
13. Norse god
14. Detest
16. Constellation bear
17. A small lake
18. Fangs
19. Dirt
20. Grain disease
22. Sexual desire
24. Anagram of "Sire"
26. Kidney-related
27. Yellowish annual clover
30. A coarse linen cloth
33. Enclosed
35. Specialty
37. Tall hill
38. Blockade
41. Spy agency
42. Demolish
45. Bettors
48. Attraction
51. Allegiance
52. Lubricated
54. Satisfy
55. Anagram of "Roominess"
59. Phillips or thumb, for example
62. Makes a mistake
63. Demands for payment
65. Fit
66. Meal in a shell
67. Smidgens
68. French for "State"
69. Winglike
70. What a person is called
71. Anagram of "Nets"



## LAST MONTHS CROSSWORD RESULT

T	O	U	R	E	R	A	S	E	K	A	P	H
U	G	L	Y	S	A	L	T	S	A	B	L	E
L	I	C	E	N	T	I	O	U	S	O	D	O
E	V	E	O	R	D	E	R	F	L	U	T	E
S	E	R	I	O	U	S	D	A	R	I	C	
			A	S	S	S	I	L	E	N	T	L
T	H	E	M	E	C	L	E	A	T	I	I	I
W	O	M	B	D	O	U	S	E	P	O	M	P
I	M	P	T	A	U	N	T	C	A	N	O	E
T	E	A	C	H	I	N	G	C	O	P		
			T	R	U	S	T	L	O	V	A	B
A	C	H	E	S	D	E	A	V	E	R	I	G
G	A	I	N	B	O	R	D	E	R	L	I	N
A	D	Z	E	O	W	N	E	R	I	D	E	S
R	E	E	L	A	N	E	N	T	V	E	R	T

Sponsored by: **Welshpool Supermarket**

Entries must be received before

**15<sup>th</sup> November, 2021**

All correct entries will be put into a hat and the winner will be drawn by Supermarket staff. No correspondence will be entered into etc.

Please remember to double-check your spelling.

**Remember to include your name, contact number and date on your returned entry, Thank you.**

**Winner of the Aug Crossword:**

Lynn Gray



# Community Group Listing

**\*Welshpool & District Advisory Group** – Contact: Linda Razinger 03 5688 1051

**\*Welshpool Fire Brigade** – training every Thursday night 7.30pm

**\*Welshpool Recreation Reserve** – Contact: Madelaine Mason 0409 976 211

**\*Welshpool Basketball Association** – Contact: Madelaine Mason 0409 976 211

**\*Prom Coast Soccer Club** – <http://www.promcoastsoccerclub.com.au/>  
Contact: Shellie Cashmore 0419 322 384

**\*Welshpool Memorial Hall** – Contact: Alan O'Neill 5688 1419

**\*Friends of Agnes Falls** – <https://www.facebook.com/FriendsOfAgnesFalls/>

**\*Port Welshpool Fishing Club** – Contact: Jenny Horner 0428 862 028

**\*Port Welshpool Working Group** – Contact: Alma Mattingley 0427 310 599

**\*Welshpool & District Playgroup** – <https://www.facebook.com/WelshpoolPlaygroup/>

**\*Welshpool & District Horticultural Society** – meeting every 2<sup>nd</sup> Wednesday of the month.  
Contact: Tom Reakes Ph. 0429966002

**\*Port Welshpool & District Maritime Museum** – Email: [pwmuseum@gmail.com](mailto:pwmuseum@gmail.com)

**\*Port Welshpool Coast Guard** – Contact: Peter Carrolan 0417 372 059



## Christmas Gift Drive

Toora & Foster Community Bank Branches are partnering with Manna Gum Community House and St Vincent de Paul this Christmas to provide a brighter Christmas for those in need.

If you would like to donate you can simply drop off donations at any of the locations listed below before 9th December 2021. Volunteers from Vinnies and Manna Gum will collect the donations and distribute accordingly around our local Gippsland area.

**Toora Bendigo Bank Branch - Mon-Fri 10am-3pm**  
**Foster Bendigo Bank Branch - Mon-Fri 9:30am-4pm**  
**Welshpool Agency - Mon-Fri 10am-3pm**  
**Manna Gum Community House - Mon-Thurs 10am-3pm**

**Make a donation to the Manna Gum Christmas Drive through Givenow.**  
<http://www.givenow.com.au/cornerinlet>  
 Donations received through GiveNow will be used to purchase specific items for families in need.

**Gift Ideas**

**Outdoor/Sporting Equip**

- kites, bat & ball, beachwear, netball / football / soccer ball

**Games/Toys**

- lego, puzzles, board games

**Books**

- diaries, colouring books, puzzle books

**Art & Craft**

- stationery, sketch books, art pencils/paints





**Baby Goods**

- please carefully check age range and only purchase safe & non-toxic item

~Please Do Not Wrap Gifts~

**Voucher Ideas**  
 Vouchers enable the recipient to purchase something they need, or even a gift for a loved one they couldn't otherwise purchase.  
 ~Local Businesses Preferred~

- Local Café / Bistro Vouchers
- Local Store Vouchers
  - Gift
  - Shoes
  - Clothing
  - Haberdashery
  - Fruit & Veg / Supermarket
  - Hardware
  - Stationary
  - Toys
  - Hairdresser / Massage
  - Plant / Nursery
- Local Mechanic Vouchers
- Fuel Vouchers
- iTunes / Google Play Vouchers
- Department Store Vouchers

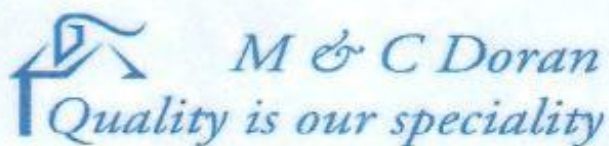





Beautiful locally made crafts available at the RTC



Reusable 'Shop Local South Gippsland' bags are available at the Welshpool RTC. The Shop Local South Gippsland promotion has been developed as part of the South Gippsland Shire Council's COVID-19 Community Support Package.

## LOCAL SERVICES.....



**Michael Doran**  
Qualified Carpenter & Joiner

16 Turnbull Street  
Port Welshpool VIC 3965  
Email: [buildingservices@mcdoran.com.au](mailto:buildingservices@mcdoran.com.au)  
Ph. 03 5688 1229  
Mb. 0429 038 409  
Fax. 03 5688 1377



**John Hoy**  
Trade qualified Farrier  
(25 years experience)

0447 229 390

**Lawn mowing & Maintenance, Rubish removal, Painting  
Window cleaning, Gutters cleaned, High pressure washer**

**Lawn mowing & Maintenance**

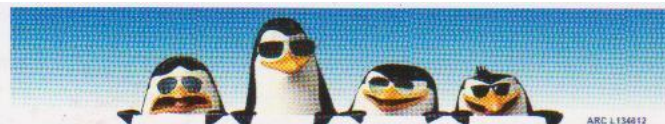
Free Quotes reasonable rates local tradesman



Dave Mcleish  
Port Welshpool

**0417 538 683**

[davemcleish@live.com.au](mailto:davemcleish@live.com.au)



**AAC MOBILE AUTO AIR CONDITIONING**

*Maintenance & Repairs to...*

**TRUCKS \* TRACTORS \* MACHINERY \* PASSENGER & FOOD TRANSPORT VEHICLES**

Ian Dubignon **M. 0448 761 642**

**KERRY McNARN**

Civil Celebrant

Toora  
Mob: 0402 100 651



**Celebrating life from beginning to end**



**& TREATMENT PLANT P/L**

FOR ALL YOUR TREATED PINE NEEDS

POSTS SAWN TIMBER DECKING CUSTOM TREATING

SLEEPERS NUTS AND BOLTS PALINGS AND MORE

SOUTH GIPPSLAND HIGHWAY, ALBERTON, VIC, 3971

Ph (03) 5183 2437

Fax (03) 5183 2659

Email [sales@albertontimber.com.au](mailto:sales@albertontimber.com.au)

# CONCRETER



**SOUTH GIPPSLAND CONCRETE**  
**ALL THINGS CONCRETE**  
**ON-SITE TIMBER MILLING**

**0400 840 729**

**WWW.SGCONCRETE.COM.AU**

## TV & DATA SYSTEMS

Digital Antennas, TV wall mounts, Data & Computer outlets, Home Theatre, Hidden Wiring, Networks, Offices, CCTV, Repairs, Equipment Installations

**Licensed Cable Installer**

Domestic, Commerical & Industrial

**Steve Mooney 0427 257 222**

## SOUTH GIPPSLAND SEPTIC TANK CLEANING

**Also Portable Toilets Hire**

**Call Chris Whittle**

**(03) 5688 1572**



Kirwan Builders

# TK Construction

*"for all your building needs"*

TK Construction - Michael Kirwan

6565 South Gippsland Highway HEDLEY VIC 3967

P: 03 5184 1223 | M: 0428 911 900

E: [kirwanbuilders@gmail.com](mailto:kirwanbuilders@gmail.com)

HIA MEMBERSHIP: 813 711 | DB-U: 20399 | A.B.N: 40 896 158 242



## Port Welshpool & District Bowling Club

22 Bowling Club Road, Port Welshpool

# Bendigo Bank

## Annual 3-Day Tournament

Tuesday 28<sup>th</sup> December 2021 - Triples.

Wednesday 29<sup>th</sup> December 2021 - Fours.

(BBQ Dinner available on Wednesday \$10/head)

Thursday 30<sup>th</sup> December 2021 - Triples.

**\$10 PER PLAYER 10:00 AM START. BOWLS ATTIRE REQUIRED**

RSVP: Margaret McDonald 03 5185 1226 / 0439 681 123

SANDWICHES AVAILABLE FOR LUNCH - MADE TO ORDER.

Local Accommodation: **BOOK IN ADVANCE**

Long Jetty Caravan Park (next door to the bowls club) (03) 56 881 233

Welshpool Hotel Motel (03) 56 881 309 (After 4pm)

**NO EFTPOS AVAILABLE - CASH ONLY**



Foster Golf Club  
7 Reserve Street  
Foster Victoria  
3960

19  
Chantelle Peters

(03) 5682 2272  
golfclub19@outlook.com.au

## ANTHONY BRAVINGTON

### Cleaning & Property Maintenance Contractor

- Commercial Cleaning, Domestic Cleaning and all types of Property Maintenance
- Accommodation Contracts
- Office Building Contracts
- Retail Shops Contracts
- School Cleaning Contracts
- Builders Cleans
- All Property Maintenance etc
- Window Cleaning
- Carpet Steam Cleaning

#### THURSDAYS & FRIDAYS ONLY

1 bedroom house	\$70
2 bedroom house	\$90
3 bedroom house	\$120
4 bedroom house	\$150

Call Anthony for all your cleaning needs

**Mobile: 0418 146 986**

**Email: anthonybravington@bigpond.com**



# J.J. Richards & Sons

## WASTE DISPOSAL

- Permanent bins & clean up skips
- Commercial, household or farm waste
  - Cardboard recycling
- Weekly, fortnightly, monthly
  - 1.5M3 OR 3M3 BINS
- Locally owned & operated

CALL OR EMAIL FOR A QUOTE

PH: 03 9794 5722

[www.jjswaste.com.au](http://www.jjswaste.com.au)

[operations.melbourne@jjswaste.com.au](mailto:operations.melbourne@jjswaste.com.au)

*"Your local name  
in the waste game"*

## KERRY McNARN

Pet Reiki

Toora  
Mob: 0402 100 651



**after all they're only human!**

**"SPRING:  
A LOVELY REMINDER  
OF HOW BEAUTIFUL  
CHANGE CAN TRULY BE."**



[dayspring.com](http://dayspring.com)

## Kindness Counts

C J H M X T N E U N X D Y J C D C O C W U X R G  
A D K P U M F D T I E R O V A F C J W K E E L Y  
R C P Z E A Z Z O X C V K U K S Z H N V Z O S T  
I L Z Z S U X V S S E N H S I F L E S N U Z D I  
N E H S Q N N L R C B O C A W I N P E F X S U V  
G I Y S Y H G R A C I O U S N E S S Z B S Z L I  
S L Y Z N M A C C O M P A S S I O N M E B U S T  
C F H X R K P Z W J C K H G X G V H N O F S P I  
P F T G N I G A R U O C N E E D E D K T E P L S  
Z O A H N E Y J T R U J Y J Z X N G H N J R S N  
L A P L C M A C L H G G S H C I D G D K X T T E  
M R M K S Z A W Y G Y T S K K R U O E C A R G S  
X A E E V T B J W Z K E T A I O O F I Y I G Y J  
B N L F R V Y C L F E F V W H G E B V D U P I S  
R T R X Y M Z H U M A N I T Y E E V R H R O U N  
G I U K U H M A E I Q Y C N O L A A D Z F L A Q  
X B J L C F L C F V H D W L H L G R D B Z I N U  
V U H N T T I C G E N E R O S I T Y T U J T K O  
A L C J S V M R W M C B U B F S U O R E N E G A  
R L A V R Q L E G N I D N A T S R E D N U W M I  
R Y A E Z Q L L I W D O O G E G R I H M R W W H  
P I S A V C W Q I F C P S M W M E C N E I T A P  
N N Q G W G H K P T N P U V I R O W V B D G N F  
C G S W Q W N O I T A R E D I S N O C T O F G Z

tact	humanity	graciousness	goodness
understanding	unselfishness	sympathy	anti bullying
service	favor	generosity	grace
heart	kindness	consideration	sensitivity
encouraging	patience	thoughtful	empathy
goodwill	compassion	caring	generous
polite			

## Subtraction from 100

1	2		3	4	
	5	6		7	8
9		10	11		
12	13		14	15	
	16	17		18	19
		20			

### Across

- 100 - 75
- 100 - 68
- 100 - 88
- 100 - 78
- 100 - 19
- 100 - 6
- 100 - 48
- 100 - 46
- 100 - 83
- 100 - 20

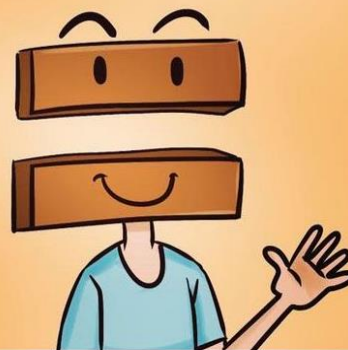
### Down

- 100 - 49
- 100 - 78
- 100 - 72
- 100 - 80
- 100 - 1
- 100 - 85
- 100 - 55
- 100 - 79
- 100 - 52
- 100 - 30

Kindness makes  
you the most  
beautiful  
person in  
the world  
no matter  
what you look like.

6				4			
	1					4	6
	3	2				5	8
2							1
9		3		6	7		2
8							6
3							
		9	2				5
	4			1	5		

Why was the equal sign so humble?



He knew he wasn't > or < anyone else.

## August Solution

2	7	8	1	6	5	9	4	3
3	9	1	4	8	2	5	6	7
5	6	4	3	7	9	2	8	1
4	8	6	9	1	3	7	5	2
7	5	3	2	4	8	1	9	6
1	2	9	7	5	6	4	3	8
8	3	7	5	2	4	6	1	9
6	4	2	8	9	1	3	7	5
9	1	5	6	3	7	8	2	4