

## Welshpool Op Shop & Nursery

We have some fantastic plants in the nursery at the moment with more new stock arriving soon.

The nursery now stock Mr Fothergills / DT Brown flower and vegetable seeds. All varieties only \$2 a packet. With a large selection on offer, they have arrived just in time to start your summer crop. You can also purchase bags of potting mix for \$7 a bag.

We look forward to seeing you soon.

Our new hours from Monday 2<sup>nd</sup> November are 10 am – 4.00 pm



### Disclaimer

This newsletter is an independent self-funded publication produced by staff and volunteers of the RTC and it does not reflect the opinions of the Committee members, South Gippsland Shire, or the Department of Planning and Community Development.



## TRADING HOURS

MON - FRI

10.00AM - 3.00PM

- WELSHPOOL COMMUNITY LIBRARY
- BENDIGO BANK AGENCY
- CENTRELINK AGENCY
- V/LINE TICKETING OFFICE
- ROOM HIRE AVAILABLE
- PASSPORT APPLICATIONS
- COPY & PRINT SERVICES

### Other services by appointment only

- Diabetes Clinic – 5683 9780
- Gibson Accounting – 5176 2031
- Royal Flying Doctors – 03 8412 0480
- Massage – 0427 881 398



## Centrelink Website

The Centrelink website ([www.centrelink.gov.au](http://www.centrelink.gov.au)) has been incorporated into the Department of Human Services website [humanservices.gov.au](http://humanservices.gov.au). The new site is a convenient, single entry point for health, social and welfare payments and services.

Any questions regarding your payments or entitlements, this would be your first port of call.

- ***You are able to register online and access details of your account.***
- ***Find out the latest information regarding services.***
- ***Calculations can be done to work out family assistance.***
- ***Access forms and brochures.***

A touch screen computer is available at the Welshpool Rural Transaction Centre for your use.

Staff at the Centrelink agency are able to assist you with registration etc.



## VLIN BUS SERVICES

**Purchase tickets at the  
Rural Transaction Centre or  
collect a VLINE Bus Timetable**

## DIABETES CLINIC

**Wednesday 28<sup>th</sup> October**

**Wednesday 25<sup>th</sup> November**

If you would like an appointment  
or have any queries, please contact

**Karen on 03 5683 9780**



Gibson Accounting

Kieran Olree

PH: (03) 5176 2031

Fax: (03) 5174 6313

101 Hotham Street  
Traralgon, Vic 3844

Email: [kieran@gibsonaccounting.com.au](mailto:kieran@gibsonaccounting.com.au)

Kieran Olree is at the RTC every Wednesday

By appointment only - **(03) 5176 2031**

For more information and all the latest tax  
updates and handy hints for tax time,  
please visit Gibson's website:

**[www.gibsonaccounting.com.au](http://www.gibsonaccounting.com.au)**



Welshpool & District Horticultural Society Inc.

# Plant Sale



Saturday October 31st  
10am to 3pm

Welshpool Memorial Hall  
South Cippisland Highway,  
Welshpool.

Healthy plants at very reasonable  
prices grown in our club nursery  
perfect as Christmas gifts.  
Plant holders and hanging baskets.

Covid safe regulations will be in operation  
Please enter from South Cippisland HWY Entrance.

Further Information: Ros McPherson  
Mobile: 0428 540 940

## Gardening Tips

### Do I need to raise my pots off the ground?

Pots - and the plants in them - usually need good drainage so beware of pots sitting in a saucer holding water, because the plant's roots will rot. If the pot is sitting on something hard and the drainage holes block, water will not drain well. Best to raise the pot on some bricks, sticks or pot wheels to allow good drainage. (Credit: Gardening Australia)

Use plastic forks to keep  
pets and animals from  
destroying your garden.





## Welshpool RTC



**A wide range of shorts available,  
get in early ready for Summer**

**Hi Vis and Casual wear**

**Call in or phone 56881051**

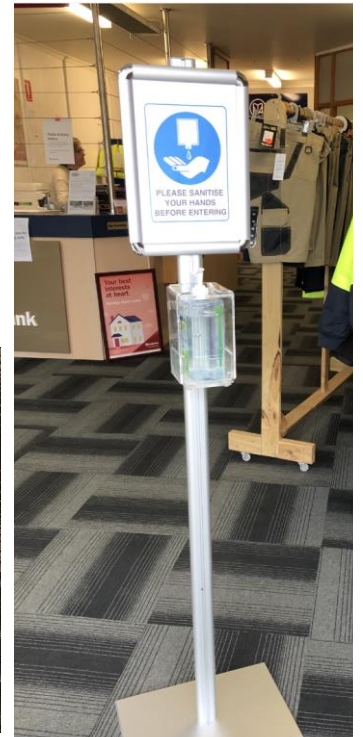


## THANK YOU

Thank you to the South Gippsland Shire Council for their funding through the South Gippsland Covid-19 Community Grant Package. With these funds we have been able to purchase two sanitiser stations and some social distancing floor signs.

These will be in the Rural Transaction Centre and the Welshpool Op Shop.

We thank the Shire for their commitment to local businesses and thank all of our customers for your ongoing support during these uncertain times.



## Welshpool Community Library

The Welshpool Community Library is currently only open for browsing during Staffed Hours, being Wednesday 12pm – 2pm. All other times will be Click and Collect or returns only.

Wednesday 12pm – 2pm conditions of entry:

- All visits are limited to a maximum of 15 minutes.
- Please use hand sanitiser on entry.
- Face masks are mandatory.
- Please wait to be signed in by a staff member.
- Your name and number will be registered for contact tracing purposes.
- Your temperature will be checked before entry.
- Proof of address is required.

For your safety and ours we cannot deviate from these rules.

Can't come in? Chat to us online [www.wgrlc.gov.au](http://www.wgrlc.gov.au) or call on 5682 1735. We are here to help!

**West Gippsland Libraries**

A friendly reminder that the Welshpool Rural Transaction Centre will be closed on Tuesday 3<sup>rd</sup> November.

## Public Holiday Notice

We will be closed Tuesday 3 November for the Melbourne Cup Public Holiday.

We will reopen Wednesday 4 November.

**Bendigo Bank**

Bendigo and Bankable Bank Limited ABN 11 108 006 179. APOL Australian Credit Licence 409761. 1/1/2017. 1/1/2019. 1/1/2020.

## Welshpool Public Cemetery

The Welshpool Public Cemetery has been seeing many improvements in recent times thanks to the Trust of local members looking after the Cemetery. As you enter you will now be welcomed with a new sign which leads to an undercover seating area. Within this area is a record of grave numbers and names by denomination. At this stage it is a list put together by members but will soon be a professionally made sign with map and grave positions.

After much research, previous unmarked graves have now also been identified and marked with the name and year of death of the deceased. The oldest recorded grave at Welshpool is 1899.

Future plans currently being discussed is a lawn cemetery, memorial wall and new fencing along the back of the cemetery.

Thank you to the Cemetery Trust members for their ongoing work in maintaining the Cemetery grounds.

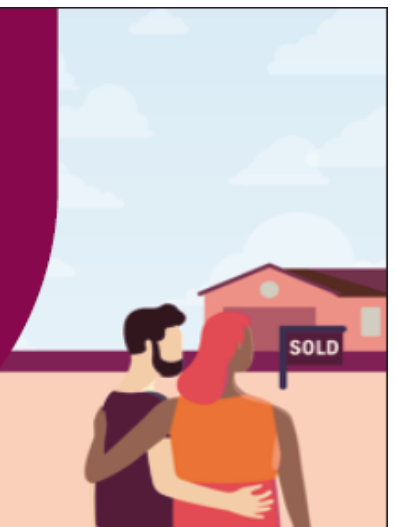


## Our new Complete Home Loan...

...takes care of you completely. Great rates and 100% offset make the Complete Home Loan one of our most exciting home loans yet!

So whether you're buying your first or next home, refinancing or investing, the Complete Home Loan has you covered.

Chat to a home loan specialist today, phone our Welshpool Agency on 5688 1051 or search Bendigo Bank home loans.



[bendigobank.com.au](http://bendigobank.com.au)

Terms and conditions, fees, charges and lending criteria apply. All information including interest rate is current as at 7 September 2020 and may be subject to change. Full details available on application. Credit provided by Bendigo and Adelaide Bank Limited ABN 11 068 049 178 Australian Credit Licence 237879. A1419239 OUT\_1520685, 22/09/2020



# Toora Football Netball Club

## \*\*\*Jumper Announcement\*\*\*

Wow- what a huge response we had to our jumper survey. For a small country club it was amazing. We received over 400 votes with the Facebook post itself having over 12,000 views and even reaching Port Adelaide Football Club fan sites.

The support for the change and the positive feedback was overwhelming. The winning design with 53% of the vote was 'A'.

After going through the feedback received we have slightly altered the design by introducing more white into the 'V' ensuring a defined 'black and white' stripe was prominent. Keeping the black and white and paying respect to heritage was a consistent request.

We are still in the process of confirming sponsors etc so logos are still to be added.

Thank you to everyone that voted and provided constructive feedback and comments.

Now that we have this result, we are currently working on potential netball dress and off field clothing designs

Go Pies



**\*\*Open Saturday, Sunday & Monday 10am – 4pm\*\***

Phone 0400 110 318

*the Olive Branch* 35 Main Street  
Welshpool  
Prom Country

NO MASK

NO ENTRY

**STEP BACK IN TIME!**

Plenty of Gift Ideas for Xmas

Bike Hire on Hold at the moment – Due to Covid



*Drinks and Snacks.  
Coffee and Cake*



*Retro, Collectables and Bric a brac  
We Buy and Sell*



Supporting  
local products  
Honey, Jams,  
Gift Ideas etc.  
Fresh Product  
when available

ALL visiting the area will be  
asked for ID

 Find us on  
Facebook



# Welshpool & District Primary School

## Term 4—We are back!

The school has never felt so full as it has over the past two weeks. It is lovely to have everyone back. It is obvious that the students have missed the peer connection. There are lots of smiles and laughs. I have been very proud of the way everyone has settle back into school. Again, I would like to thank our whole school community for their work during remote learning. It was not an easy period for anyone. I am glad that we start this term with some certainty and an opportunity to finish the year on a positive note, all together at school.

This term we will be focusing on ensuring students are on track with their learning. This may be additional support or further extension. Either way staff have been busy assessing students and are developing programs to support your child through this next term and transition into 2021.

Please remember if you have any concerns or questions in regards to your child's learning please do not hesitate to contact your child's teacher.

Over the last remote learning period we had a number of maintenance and upgrade works occurring at the school. It was nice for the students to return to a mini face lift. I have included some photos so that you are able to remotely share the experience too.



Gabrielle Boyd

Principal

Little School, Big Heart

So Far, the 2/3s have had an amazing start to Term 4! Our first week back the students absolutely smashed some intensive assessments, producing some amazing writing and reading! Some of our students especially have shone these first couple of weeks for a number of reasons including remaining motivated and encouraging in class; creating some amazing writing pieces; and making great progress with their reading! We are looking forward to a busy but fun remainder of Term 4!





**E.W. & H.P. FOWLER  
WELSHPOOL OUTDOORS &  
ORIGIN GAS SUPPLIES**

**19 MAIN STREET  
WELSHPOOL VIC 3966  
PH: 0356881304  
EMAIL: welshpooloutdoors@bigpond.com**



**WE'RE HERE TO STAY**

**QUAD BIKE COMPLIANT SAFETY STANDARD**

Compliant quad bikes available now that meet the Consumer Goods (Quad Bikes) Safety Standard.

**3 YEAR WARRANTY**

**CFMOTO**

**CFMOTO 400 EPS**

**CFMOTO**

**CFMOTO.COM.AU**

**Distributed by Mojo Motorcycles**

• Albury (02) 4021 4392 • Ballarat (03) 5339 4200 • Carrington (02) 4076 1151 • Donald (03) 5497 1611 • Ferntree Gully (03) 9758 8000  
• Hamilton (03) 5572 4327 • Kilmore (03) 5782 1696 • Lake Boga (03) 5037 2389 • Leongatha (03) 5642 4044 • Portland (03) 5523 5399  
• Red Cliffs (03) 5024 3610 • Shepparton (03) 5849 1577 • Tooradin (03) 5998 3216 • Traralgon (03) 5174 1702  
• Warragul (03) 5622 3875 • Warrnambool (03) 5561 1700 • Welshpool (03) 5688 1304 • Whittlesea (03) 9716 2019

**Welshpool Golf Club**

We have been open, closed, open again depending on the weather but have still managed to have a few comps. Fri 02/10/20 Chicken Run, Won by L. Pope 17pts, R/U R. Barwick 16pts. Sat 03/10/20 saw the Monthly Medal, Star Medal & 2nd round of the Mens Championship. Busy day... Monthly Medal won by B. MacPherson nett 72 c/b, R/U M. Lowe nett 72. NTP 6th G Brown, 8th B MacPherson, 15th G English, 17th L Pope. Star Medal went to B MacPherson 72. The final of the Mens Championship was to have been played on Sat 17th but we had to close the course due to the weather so the plan is to hold that next Sat 24th. The Mixed Foursomes will be played on the Sunday 25th. This means that the Mens Foursomes will be held the following Sat 31st. Fri 16th Chicken Run won by P Delaney 17pts C/B from Peta Barlow on 17pts. NTP 8th G Wilkinson & ladies 6th Peta Barlow. Hopefully the weather Gods will be kind and we can continue to play some interesting golf.

Richard Knowles  
Captain WGC

**SCHOOLS ARE BACK  
TAKE EXTRA CARE  
DURING SCHOOL TIMES**





## Welshpool Op Shop & Nursery

Monday to Friday

10am – 4pm

PH: 0474 591 014



LIFE IS SHORT, SMILE  
WHILE YOU STILL  
HAVE TEETH.



### RTC Rooms for Hire

Office Hire : \$11 per hour

\$33 per day

Consulting Room : \$27.50 per day

Meeting Room Hire : \$38.50 per day



West Gippsland  
Libraries

Located at the Welshpool RTC

Click and Collect – Wednesday's  
12noon-2pm



### WELSHPOOL POST OFFICE

20 Main Street Welshpool Phone: 5688 1419

Email: [welshpoolpostal@bigpond.com](mailto:welshpoolpostal@bigpond.com)

We will be holding an **Evening Shopping Event** on **Tuesday 10<sup>th</sup> November**. We will be **open til 8pm!!!** Specials on the night, and door prizes.

Contact us for further details, or see the **Shopping Event** posted on our **Facebook Page**

**Christmas Trading Hours** for  
November and December  
Monday – Friday 9am – 5pm  
Saturday 9am – 12 noon



Find us on  
**Facebook**



# Port Welshpool & District Maritime Museum

When 2020 burst onto the calendar, a New Year was in front of us to enjoy. With the sun shining, Christmas over and Easter approaching, different clubs in the district were excited in anticipation of new exhibitions, book launches and shows in the final planning. All was looking rosy.

Then.....Covid 19 hit us.

Now many weeks down the track, here we are some still in stage four lock down, waiting for restrictions to ease. During this time of uncertainty and what seems like a new way of life, staying in touch with family and friends is more important than ever.

With the museum closed to the public, behind the scenes work has progressed and much has been achieved. Thanks to the volunteers for their dedication to history of the port. One such achievement is, **The Crane**. It has been restored and is back in prominent place in the museum grounds. With a new boom and a splash of paint it's back to its historic best.

This crane was always a very important part of the fishermen's jetty. I don't know when it was first erected but guess it was when the jetty was built. Many early photos at the museum show this crane, and as the jetty expanded the crane stayed put. The fishermen has many uses for it, to winch an engine from a boat, also to winch Cray Caufts in and out of the water or lift boxes of fish to name a few.

Swimming down at the jetty was a highlight of the school holidays by the kids of the port and they also used the crane, providing the tide wasn't running too fast. Standing on the jetty holding onto the hook you would take a run and leap to swing over the water and drop in to the deep water. No fear, all good fun.

Caufts were used to store the crays, while they waited to be sent to market. Once ready for market they were put into hessian bags and transported to Melbourne Fish Market for sale. Market prices could change due to the time of year or the weather, with the crayfish needing to be alive to sell at market, Caufts were part of the process.

An early photo shows cattle being winched from the cattle boat and put into a truck. Certainly a practice not used today but back then quite acceptable. A cattle run was developed and a cattle prod was used to get the cattle to jump from the deck into the run. This needed to be done at high tide. All history in the past and as we know, but now all is done under very strict laws for the welfare of the livestock.

Why the crane was removed from the jetty we are yet to learn, but whatever the reason the museum is the proud custodian of another great piece of Port Welshpool's fishing history.





**Welshpool  
Supermarket  
& Café**

'Home Made Cakes'



**OPEN 6 DAYS A WEEK**

**Monday to Friday: 9.30am-4pm**

**Saturday: 9am-3pm**

**Sunday: Closed**

**'Call in for a Latte'  
Ph. 03 5688 1452**

*"Being Happy  
Never Goes  
Out of Style"*

*Lilly Pulitzer*



**Takeaway meals & drinks  
available now every Thur-Sun  
Call 5688 1309 to place your order**

**Bistro & Bar Meals:  
Open From Thur 15<sup>th</sup> October  
Thur – 5pm-8pm  
Fri-Sun 12noon-2pm & 5pm-8pm**

**Main Street Welshpool, Vic 3966  
Contact: SHANE**

**Ph/Fax: (03) 56881309**

**FOSTER SEAFOODS**



**35 Main Street, Foster**

**Ph: (03) 5682 2815**

With catches of Inlet fish arriving within the shop on a daily basis and our vessels returning from extended trips into Bass Strait, you can be assured that the quality is second to none.

We also have an extensive list of products with very competitive prices.

**Danny O'BRIEN MP**  
Member for Gippsland South

54B Cunninghame St, Sale VIC 3853  
03 5144 1987  
danny.obrien@parliament.vic.gov.au  
www.dannyobrienmp.com.au



**A better deal**

*for Gippsland South*

Funded from Parliamentary Budget

[f](#) [t](#) [i](#) /dannyobrienmp

**I did not slap you**



**BUTTERFLY  
PASSENGER SERVICE**

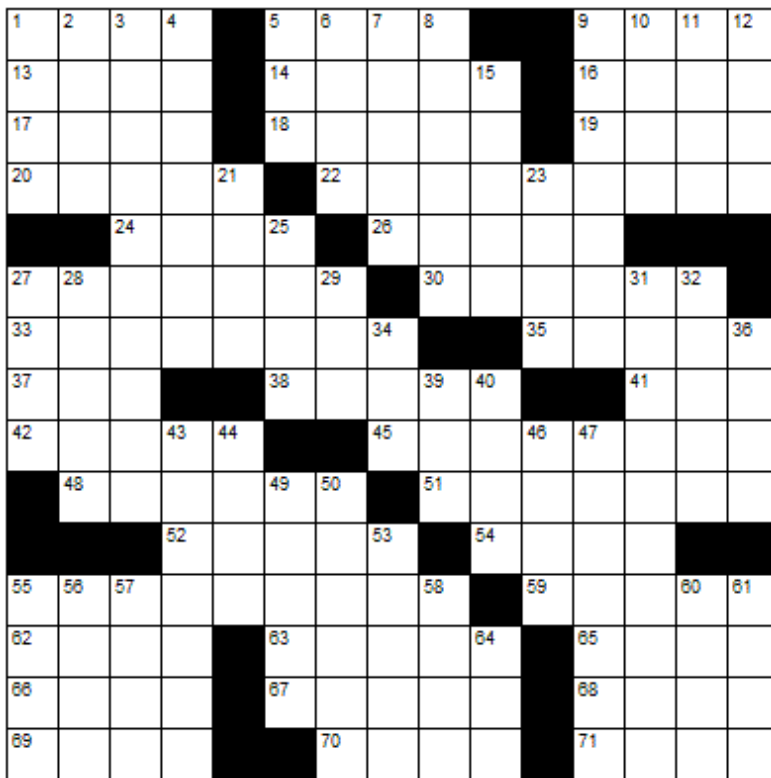
Butterfly Passenger Service is available to all South Gippsland residents who have to travel to shops or to attend medical appointments during COVID 19 restrictions.

If you don't have your own transport and need to be somewhere please call Kerry on 0411 334 236 to discuss your travel requirements and get a quote.





# CROSSWORD



## Down

1. French for "State"
2. Handout
3. Certain dark-colored igneous rocks
4. A Christian recluse
5. Confederate soldier
6. Relating to urine
7. Meddle
8. Foursome
9. Refuse to do business with
10. Component of urine
11. Leave in a hurry
12. Rabbit
15. Fry briefly
21. Stigma
23. Tastes
25. Goddess of discord
27. Disable
28. Anagram of "Urban"
29. Put clothing on
31. Green chalcedony
32. Hoisting device
34. Tear
36. Jittery
39. Spy agency
40. Gambling game
43. Stalemate
44. A heavy open wagon
46. Adult male sheep
47. Snipped
49. Requires
50. Erase
53. Appointed
55. Wan
56. Beers
57. Badgers
58. Only
60. District
61. Adolescent
64. Indian bread

## Across

1. Border
5. Iron oxide
9. Shrub
13. Unit of pressure
14. Sea eagles
16. Killer whale
17. Away from the wind
18. Flora and fauna
19. 365 days
20. Abounds
22. Scintillate
24. Agreeable
26. Terrace
27. Condiment
30. The deepest and most remote part
33. Toward the front
35. Inscribed pillar
37. Nigerian tribesman
38. A small cut
41. Cover
42. Frenzied
45. Stabbing
48. Incarcerate
51. Drawing a comparison
52. Primp
54. Leave out
55. Long slender cigars
59. Small fatty European fish
62. "Oh my!"
63. An evil supernatural being
65. Minute opening
66. Lower limbs
67. Grave marker
68. Type of sword
69. To be, in old Rome
70. Biblical garden
71. Prefect



## LAST MONTHS CROSSWORD RESULT

G	A	P	S		T	R	I	M		S	U	E	D	
U	N	A	U		N	O	V	A	S		A	P	S	E
L	O	W	S		T	A	I	N	T		L	O	N	E
P	A	N	T	Y		R	E	T	R	A	I	N	E	D
		B	A	I	T		D	R	U	P	E			
S	T	R	I	P	E	D		A	M	E	N	D	S	
P	H	O	N	E	T	I	C			S	T	E	E	D
A	U	K			E	D	E	M	A			F	R	O
S	M	E	L	L			E	I	N	S	T	E	I	N
	B	R	U	I	S	E		G	E	H	E	N	N	A
			D	I	T	C	H		W	O	R	D		
G	L	A	D	I	A	T	O	R		D	R	A	F	T
L	O	C	I		T	Y	P	O	S		A	B	L	E
A	B	E	T		S	P	E	W	S		I	L	E	X
D	O	S	E			E	S	S	E		N	E	X	T

Sponsored by: **Welshpool Supermarket**

Entries must be received before

**16<sup>th</sup> November, 2020**

All correct entries will be put into a hat and the winner will be drawn by Supermarket staff. No correspondence will be entered into etc.

Please remember to double-check your spelling.

**Remember to include your name, contact number and date on your returned entry, Thank you.**

**Winner of the September Crossword:**

Arie Bos



## Community Group Listing

**\*Welshpool & District Advisory Group** – Contact: Linda Razinger 03 5688 1051

**\*Welshpool Fire Brigade** – training every Thursday night 7.30pm

**\*Welshpool Recreation Reserve** – Contact: Madelaine Mason 0409 976 211

**\*Welshpool Basketball Association** – Contact: Madelaine Mason 0409 976 211

**\*Prom Coast Soccer Club** – <http://www.promcoastsoccerclub.com.au/>  
Contact: Shellie Cashmore 0419 322 384

**\*Welshpool Memorial Hall** – Contact: Alan O'Neill 5688 1419

**\*Friends of Agnes Falls** – <https://www.facebook.com/FriendsOfAgnesFalls/>

**\*Port Welshpool Fishing Club** – Contact: Vern Suckling 5688 1554

**\*Port Welshpool Working Group** – Contact: Alma Mattingley 0427 310 599

**\*Welshpool & District Playgroup** – <https://www.facebook.com/WelshpoolPlaygroup/>

**\*Welshpool & District Horticultural Society** – meeting every 2<sup>nd</sup> Wednesday of the month.  
Contact: Fran Grylls Ph. 5184 1376

**\*Port Welshpool & District Maritime Museum** – Email: [pwmuseum@gmail.com](mailto:pwmuseum@gmail.com)  
Contact: Fran Grylls Ph. 5184 1376

**\*Port Welshpool Coast Guard** – Contact: Peter Carrolan 0417 372 059



Community Bank  
Toora and Foster

### Need help with uni or TAFE costs?

Applications are invited from eligible students in the local district attending university or TAFE for the first time in 2021.

Scholarship name: Toora & Foster Community Bank Llew Vale Scholarship

Applications are now open.

[bendigobank.com.au/scholarships](http://bendigobank.com.au/scholarships)



Community Enterprise Foundation™

Community Bank Scholarships will be funded from management accounts of the Community Enterprise Charitable Fund ABN 12 102 649 966 (the Fund). The Bendigo Centre, Bendigo VIC 3550, Sandhurst Trustees Limited ABN 16 004 030 737 AFSL 237906, a subsidiary of Bendigo and Adelaide Bank Limited ABN 11 068 049 178, AFSL 237879, is the trustee of the Fund. 1409006-1409008 OUT\_1478463

### Toora & Foster Community Bank Llew Vale Scholarship

-The Scholarship aims to assist high achieving and highly motivated local students who have been offered a place at an Australian University, TAFE Institute or College for the first time and are experiencing financial and/or social challenges.

-Duration 2 years

-Award Value \$5000 per annum

-Application Dates – Open 21.9.20  
Close 24.1.21

-For further information brochures are available at the Toora and Foster Branch and the Welshpool Agency, or visit the website [bendigobank.com.au/scholarships](http://bendigobank.com.au/scholarships)

-If you still have a query, please contact Toora & District Community Branch Ph 56862000 or Foster Branch Ph 56822287



## LOCAL SERVICES.....



*M & C Doran*  
*Quality is our speciality*

**Michael Doran**  
Qualified Carpenter & Joiner

16 Turnbull Street

Port Welshpool VIC 3965

Email: [buildingservices@mcdoran.com.au](mailto:buildingservices@mcdoran.com.au)

Ph. 03 5688 1229

Mb. 0429 038 409

Fax. 03 5688 1377



**John Hoy**  
Trade qualified Farrier  
(25 years experience)

0447 229 390



*Maintenance & Repairs to...*

TRUCKS\*TRACTORS\*MACHINERY\*PASSENGER & FOOD TRANSPORT VEHICLES

Ian Dubignon

**M. 0448 761 642**



**Liz O'Neill**  
Proprietor

Styling on Stanley  
Unisex Salon

46 Stanley Street,  
Toora  
2962.  
56862328

Wednesday, Thursday, Friday 9am – 5pm  
and Saturday

**Lawn mowing & Maintenance, Rubish removal, Painting  
Window cleaning, Gutters cleaned, High pressure washer**

**Lawn mowing & Maintenance**

Free Quotes reasonable rates local tradesman



Dave Mcleish  
Port Welshpool

**0417 538 683**

[davemcleish@live.com.au](mailto:davemcleish@live.com.au)



FOR ALL YOUR TREATED PINE NEEDS

POSTS SAWN TIMBER DECKING CUSTOM TREATING

SLEEPERS NUTS AND BOLTS PALINGS AND MORE

SOUTH GIPPSLAND HIGHWAY, ALBERTON, VIC, 3971

Ph (03) 5183 2437

Fax (03) 5183 2659

Email [sales@albertontimber.com.au](mailto:sales@albertontimber.com.au)

# CONCRETER



**SOUTH GIPPSLAND CONCRETE**  
**ALL THINGS CONCRETE**  
**ON-SITE TIMBER MILLING**

**0400 840 729**

**WWW.SGCONCRETE.COM.AU**

## TV & DATA SYSTEMS

Digital Antennas, TV wall mounts, Data &  
Computer outlets, Home Theatre, Hidden  
Wiring, Networks, Offices, CCTV, Repairs,  
Equipment Installations

**Licensed Cable Installer**

Domestic, Commerical & Industrial

**Steve Mooney 0427 257 222**

## SOUTH GIPPSLAND SEPTIC TANK CLEANING

Also Portable Toilets Hire

Call Chris Whittle

**(03) 5688 1572**



Kirwan Builders

## TK Construction

*"for all your building needs"*

TK Construction – Michael Kirwan

6565 South Gippsland Highway HEDLEY VIC 3967

P: 03 5184 1223 | M: 0428 911 900

E: [kirwanbuilders@gmail.com](mailto:kirwanbuilders@gmail.com)

HIA MEMBERSHIP: 813 711 | DB-U: 20399 | A.B.N: 40 896 158 242

## ANTHONY BRAVINGTON

### Cleaning & Property Maintenance Contractor

- Commercial Cleaning, Domestic Cleaning and all types of Property Maintenance
- Accommodation Contracts
- Office Building Contracts
- Retail Shops Contracts
- School Cleaning Contracts
- Builders Cleans
- All Property Maintenance etc
- Window Cleaning
- Carpet Steam Cleaning

#### THURSDAYS & FRIDAYS ONLY

1 bedroom house	\$70
2 bedroom house	\$90
3 bedroom house	\$120
4 bedroom house	\$150

Call Anthony for all your cleaning needs

**Mobile: 0418 146 986**

**Email:** anthonybravington@bigpond.com



### WASTE DISPOSAL

- Permanent bins & clean up skips
  - Commercial, household or farm waste
    - Cardboard recycling
  - Weekly, fortnightly, monthly
    - 1.5M3 OR 3M3 BINS
  - Locally owned & operated
- CALL OR EMAIL FOR A QUOTE

PH: 03 9794 5722

[www.jjswaste.com.au](http://www.jjswaste.com.au)

[operations.melbourne@jjswaste.com.au](mailto:operations.melbourne@jjswaste.com.au)

*"Your local name  
in the waste game"*



## WeighLess With Julie Ray

Weight Loss Consultant  
Specialising in Healthy Eating

RED ROOF STUDIOS  
125 Commercial Road  
YARRAM VIC 3971

PHONE 0429832346  
TO MAKE AN APPOINTMENT

## Head to Health

Are you looking for  
mental health support?



Go to [headtohealth.gov.au](http://headtohealth.gov.au) to find online  
and phone services and information.



Australian Government  
Department of Health

Available at the Welshpool Op Shop

— FARM —  
**FRESH**  
  
**★ EGGS ★**  
\$6 Dozen





## Australian Animals

DIRECTIONS: Find and circle the animal names in the grid. Look for them in all directions including backwards and diagonally.

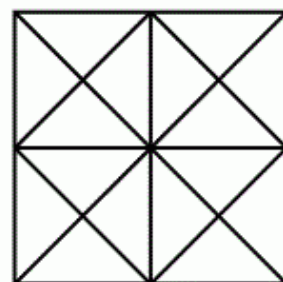
I	Y	W	L	C	B	Q	X	K	S	N	Q	A	Z	S	W	J	K
Z	K	A	I	X	R	I	Y	B	B	A	Y	K	P	V	W	Z	X
M	F	L	V	W	O	L	I	T	T	L	E	P	E	N	G	U	I
P	R	L	E	B	C	B	H	I	E	Y	C	L	L	L	O	U	Q
G	I	A	D	O	O	Y	U	J	K	M	H	W	N	T	O	L	A
I	L	R	Y	G	D	P	B	W	D	D	I	T	A	I	L	N	
A	L	O	N	R	I	V	S	U	Z	A	D	N	Z	B	G	V	A
N	E	O	R	N	L	R	G	T	P	Z	N	I	D	M	D	E	O
T	D	T	O	O	E	O	B	L	O	Z	A	I	G	U	E	D	K
C	N	T	H	L	N	W	A	L	L	A	B	Y	Q	N	F	N	O
L	E	C	T	G	D	T	G	C	Z	A	U	J	C	P	O	A	O
A	C	E	U	L	Y	P	Q	A	J	X	W	I	E	P	Q	I	R
M	K	X	A	P	C	F	U	S	J	S	Q	S	W	E	P	N	A
R	L	U	U	K	G	B	M	S	W	M	U	S	S	O	P	A	G
C	I	S	C	U	X	U	T	O	S	X	O	Q	R	G	Z	M	N
E	Z	D	R	A	D	A	M	W	K	P	K	E	O	N	Z	S	A
M	A	O	O	B	D	B	X	A	C	F	K	M	H	I	T	A	K
U	R	G	V	F	A	F	C	R	Q	O	A	J	E	D	D	T	G
A	D	B	U	T	A	B	Y	Y	B	Y	F	Q	U	Z	O	S	

BILBY  
CASSOWARY  
COCKATOO  
CROCODILE  
DINGO  
DUGONG  
ECHIDNA  
EMU  
FRILLED NECK LIZARD  
GIANT CLAM  
KANGAROO  
KOALA  
LITTLE PENGUIN  
NUMBAT  
PLATYPUS  
POSSUM  
QUOKKA  
QUOLL  
TASMANIAN DEVIL

THORNY DEVIL  
WALLABY  
WALLAROO  
WOMBAT  
YABBY



© 2018 puzzles-to-print.com



Number of Triangles? \_\_\_\_

Number of Squares? \_\_\_\_

	3	4						9
9	6		2					
						6		7
			3		8	5		
	2		6		4		1	
		8	5		2			
5		7						
					5		8	1
2						7	3	

### SEPTEMBER SOLUTION

3	7	4	1	6	8	2	5	9
5	1	9	4	2	7	6	8	3
2	8	6	3	9	5	7	1	4
6	9	8	5	4	1	3	7	2
1	2	3	7	8	6	9	4	5
4	5	7	9	3	2	1	6	8
9	6	2	8	7	4	5	3	1
8	3	5	6	1	9	4	2	7
7	4	1	2	5	3	8	9	6

5	3	9	1	4	6	8	7	2
8	4	7	9	2	5	3	1	6
2	6	1	3	7	8	9	5	4
6	7	5	4	8	1	2	9	3
9	1	2	6	3	7	5	4	8
4	8	3	5	9	2	7	6	1
3	2	6	7	1	9	4	8	5
7	5	8	2	6	4	1	3	9
1	9	4	8	5	3	6	2	7

