

## South Gippsland Shire Council

Following more than two years in administration, the South Gippsland Shire now has a newly voted Councillor. Congratulations to our new Councillors who were officially sworn in on Tuesday 16<sup>th</sup> November at Memorial Hall.

Our new mayor is Mohya Davies and Deputy Mayor Nathan Hersey.

Pictured left to right: Nathan Hersery (Strzelecki), Jenni Keerie (Strzelecki), Sarah Gilligan (Prom Coast), Adrian Darakai (Tarwin Valley), John Schelling (Tarwin Valley), Michael Felton (Strzelecki), Clare Williams (Tarwin Valley), Scott Rae (Prom Coast), Mohya Davies (Prom Coast).



### Disclaimer

This newsletter is an independent self-funded publication produced by staff and volunteers of the RTC and it does not reflect the opinions of the Committee members, South Gippsland Shire, or the Department of Planning and Community Development.



TRADING HOURS  
MON - FRI  
10.00AM - 3.00PM

- WELSHPOOL COMMUNITY LIBRARY
- BENDIGO BANK AGENCY
- SERVICES AUSTRALIA AGENCY
- V/LINE TICKETING OFFICE
- ROOM HIRE AVAILABLE
- PASSPORT APPLICATIONS
- COPY & PRINT SERVICES
- BISLEY WORKWEAR

**Other services by appointment only**

- Gibson Accounting – 5176 2031



## We're closer than you think

Our Agents can help you connect with Centrelink, Medicare and other government programs and services.

Australian Government Services Australia Agents have free self service facilities. They also have staff who can help you.

At our Agents you can:

- use our computer to access my.gov.au and other government programs and services and to search for jobs
- use the telephone to access our self service options or to speak to us
- access free Wi-Fi 24/7 to connect to government services. No password required
- scan, fax and photocopy documents
- have your confirmation of identity documents certified
- lodge forms, print information and pick up brochures.

### YOUR LOCAL AGENT IS:

Welshpool Rural Transaction Centre  
14 Main Street  
Welshpool Vic 3966



## VLIN BUS SERVICES

**Purchase tickets at the  
Rural Transaction Centre or  
collect a VLINE Bus Timetable**

## DIABETES CLINIC

If you would like an appointment  
or have any queries, please contact

**Foster Community Health on  
03 5683 9780**



Gibson Accounting

Kieran Olree

PH: (03) 5176 2031

Fax: (03) 5174 6313

101 Hotham Street  
Traralgon, Vic 3844

Email: [kieran@gibsonaccounting.com.au](mailto:kieran@gibsonaccounting.com.au)

Kieran Olree is at the RTC every Wednesday

By appointment only - **(03) 5176 2031**

For more information and all the latest tax  
updates and handy hints for tax time,  
please visit Gibson's website:

**[www.gibsonaccounting.com.au](http://www.gibsonaccounting.com.au)**

# Welshpool Basketball Association

We Are Back!! And we are so excited.

Although, like everything, we had a few delays, and our season looks a little different to usual, we are so pleased to be back. It's been great to hear from the kids how much they have missed playing.

As well as our returning members, we have had a large number of new players join us at Welshpool which is wonderful and we welcome them all.

Once again we have our minis and juniors on a Wednesday night and intermediates and seniors on a Thursday night. We will be playing a split season to allow for the delay in starting due to covid. Part of our season is on now until Christmas, then after a break we will come back in February to conclude the season.

We would like to thank the Port Welshpool Fishing Club for their donation of \$400 to our club. These funds will be used for our end of season trophies.

Good luck to all of our teams.



## Port Welshpool Fishing Club

Our first meeting for the year, which incorporated our AGM, was a great success. Our returning committee welcomed everyone back after a long break. It was great to see such a large crowd and watch the kids enjoying themselves out on the oval.

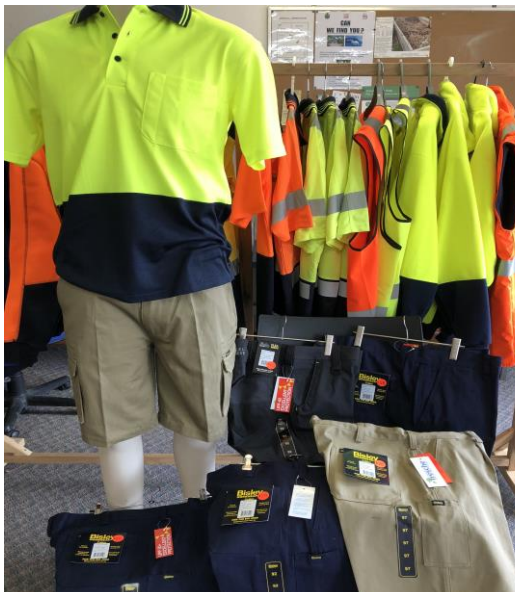
Our next dinner will be our Christmas get together on Saturday 4<sup>th</sup> December at the Welshpool Recreation Reserve on Port Welshpool Road with the evening starting at 6.30pm. We will also be presenting the Port to Port challenge trophy on the night and look forward to a few of our friends from the Port Albert Fishing Club joining us for the evening.

We are still governed by the current covid rules so we can only admit fully vaccinated club members, guests and families into the venue apart from children under 12. Please have your vaccination certificates available to view as we would hate to have to turn someone away.

We look forward to seeing you all again, until then safe fishing and tight lines.

EMAIL: [PWFC2021@outlook.com](mailto:PWFC2021@outlook.com)





**Workwear and Hi Vis Clothing  
In Stock & available to order  
Call in to the Welshpool RTC  
or phone 56881051**



### RTC Room for Hire

Office Hire : \$11 per hour  
\$33 per day



**The Welshpool Agency hours remain as  
Monday to Friday 10am to 3pm**

### Looking back 20 years.....

*From The Mirror, November 14, 2001*

*The Welshpool and District Rural Transaction Centre has been rewarded for its services by receiving "The Other Award" which is awarded by the Centre for Rural Communities of Monash University, in recognition of community enterprise development. Manager of the centre, Kerry Pinzone said the award "acknowledges our volunteers and committee members that work really, really hard to put all of this together. It says to us 'congratulations, you've done a good job.'"*

*Thanks to the guidance of the Welshpool & District Advisory Group the RTC proudly continues to serve our community. We are a Bendigo Bank Agency, Services Australia Agency and the Welshpool Community Library. Bisley Workwear, photocopying and Gibson Accounting all add to our services. The staff and volunteers work tirelessly to ensure the future of the RTC and Welshpool Op Shop. Thank you to the community of Welshpool for supporting us.*

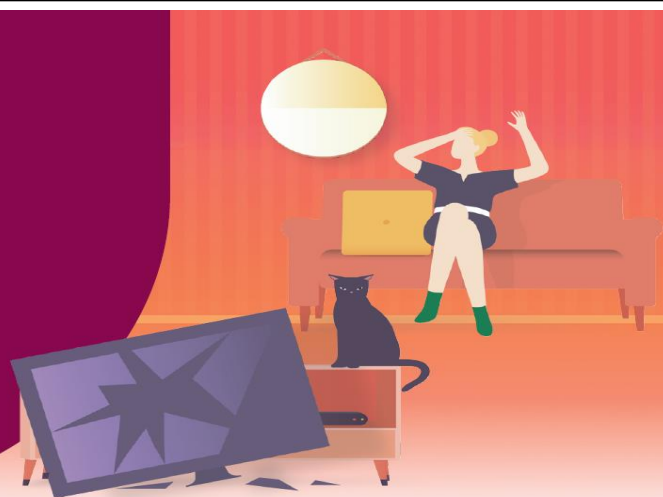
## Home & contents insurance

The unexpected happens.

With Bendigo Bank, you'll have home and contents insurance to rely on.

**To protect what matters to you, search Bendigo Bank Insurance.**

 Welshpool Agency 5688 1051



Bendigo and Adelaide Bank ABN 11 068 049 178 AFSL 237879 acts under its own Australian Financial Services Licence number and under an agreement with a range of insurers. See target market determination: [bendigobank.com.au/TMD](http://bendigobank.com.au/TMD). A1404742 OUT\_3859148, 07/10/2021

# Welshpool Op Shop & Nursery

Monday to Friday  
10am – 4pm  
Saturday 10am – 2pm  
PH: 0474 591 014



The Welshpool Op Shop is looking for Volunteers  
Please enquire at the Rural Transaction Centre



Available at the Welshpool Op Shop  
At the RTC during lockdown periods

— FARM —  
**FRESH**  
  
★ **EGGS** ★  
\$6 Dozen

Glasses recently found in front of Op Shop  
If they belong to you please pick up from the RTC



A great assortment of plants in our nursery



**ALL SHOES – \$1 A PAIR**

Adults, kids, casual, formal  
You're sure to find something for everyone



## Welshpool and District Horticultural Society

Thank you to everyone who came to our very successful Plant Sale! From the look of our empty Nursery shelves there will be some busy happy gardeners planting their purchases this week!!



Open Thursday to Monday 10 - 4  
Phone 0400 110 318

the **Olive Branch** Prem Country

**STEP BACK IN TIME - 1890's to 1970's**  
**WHAT A GREAT DELIGHT !!**


35 Main Street  
Welshpool

Presenting local products  
Honey, Jams,  
Gift Ideas etc.  
Fresh Produce  
when available

Drinks and Snacks,  
Coffee and Cake

Find us on  
Facebook

Retro, Collectables and Bric a brac  
We Buy and Sell



# 2022 Prep Transition



Each Monday from 1-3pm we have been running our prep transition program. Together with our new prep friends we have been having lots of fun playing together and learning new skills. This week we went on a treasure hunt to explore the school and find our missing treasure teddies. We also practised counting to 10 and worked together to make number jelly fish. Each week we look forward to seeing our new prep friends and we can't wait to have them in our class next year.

Miss Pamall



Tickets on sale at the RTC  
and other local stores.

Only \$2 per ticket

Tickets Drawn 16<sup>th</sup> December

**E.W. & H.P. FOWLER  
WELSHPOOL OUTDOORS &  
ORIGIN GAS SUPPLIES**

**19 MAIN STREET  
WELSHPOOL VIC 3966  
PH: 0356881304  
EMAIL: welshpooloutdoors@bigpond.com**

**FREE!**  
**45L ICEBOX AND  
BUCKET HAT\***

\*Offer available 01/09/2021 - 31/01/2022 on the following Husqvarna models:  
TRACTORS: TS242TXD, TS248TXD, TS354, TC242TX,  
ZERO TURN MOWERS: Z242E, Z242F, Z248F, Z254F.  
While stocks last at participating Husqvarna Dealers only.



**L TS242TXD**

*Kawasaki FR Series V-Twin - 21.5hp - 42" Cutting Width*  
Ideal for regular use in medium-sized to large gardens. It is characterized by the 107cm wide ClearCut™ cutting deck, the intelligent, user-friendly design and the simple starting process by turning the key.



**\$6,719** RRP

**FREE!  
ICEBOX AND  
BUCKET  
HAT\***

**L TS248TXD**

*Kawasaki FR Series V-Twin - 23.0hp - 48" Cutting Width*  
A powerful and comfortable side discharge tractor with sturdy ClearCut™ deck for medium to large-sized gardens. Hydrostatic with automatic transmission for easy, trouble-free operation that gives superior traction in slippery conditions and slopes.



**\$7,245** RRP

**FREE!  
ICEBOX AND  
BUCKET  
HAT\***

## Welshpool Recreation Reserve

With Covid restrictions easing we are pleased to be able to start holding face to face meetings again to continue to run the facility to its full capability.

We are so happy to see families back playing basketball in the stadium, there have been lots of happy faces back on the court which is marvellous.

We also welcome the Port Welshpool Fishing Club who are now calling the Recreation Reserve home. It's great to have another local club making use of our community facility.

Thank you also to the Port Welshpool Fishing Club for their recent donation of \$400 to the Reserve. This will be a great help towards our next project.

Unfortunately with the uncertainty of ongoing restrictions we were unable to organise another Lawn Mower Race day. However, we look forward to having the crew from AROLMRA back in December 2022 for another amazing family day out.

With restrictions now eased we are happy to announce the return of our annual Seafood Feast to be held in February. Stay tuned for details in the next newsletter.

(photo of our delicious raffle prizes up for grabs at the end of the night from our last seafood night)



## Port Welshpool and District Bowling Club

After a very wet week our green was sodden and it was touch and go as to whether our first monthly triples for the season would go ahead. Fortunately the weather gods smiled upon us and by the end of the day even the sun made an appearance. The green drained extremely well and all who attended had a great day.

The day was sponsored by fantastic supporters of our local community, Alan and Cath from the [Welshpool Post Office](#) who were represented today by Cath and Sheryl. They presented the winners - Ray, Jeff and Bruce from Meeniyen (pictured left) and Runners-up - Bruce, Bill and Wendy from Fish Creek (pictured right) with their prize money.



### WELSHPOOL POST OFFICE

20 Main Street Welshpool Phone: 5688 1419

Email: [welshpoolpostal@bigpond.com](mailto:welshpoolpostal@bigpond.com)



**SAMSUNG  
GALAXY A12**  
Available  
Unlocked \$299  
Telstra \$249.

**A11 Telstra \$229**

**Unlocked OPPO  
A54 5G coming  
December. Intro  
price \$299 !!!.**  
(valid til 24 Dec 2021)



Find us on  
**Facebook**



# Port Welshpool and District Maritime Museum

Hi Everyone,

Well here we are again, “November” coming to a close, and as we look back what a year it has been. When 2021 followed on from 2020, who would have thought our lives could change in so many ways, with Covid 19. We haven’t had that many restrictions put on us since we were kids.

Some areas have been hit more than others, but all in all, I think you will have to agree small business has suffered quite considerably. And as we climb out of lockdowns and all the restrictions that come with it, hopefully we can look forward to some warm weather, [we have had our share of rain and cold winds], as we head off towards the Summer season. Let’s face it the sun can make all the difference in a day. But then we have to be careful what you wish for as Summer may be a stinker.

At the Museum we have had our normal winter closure that became extended with the restrictions. Now we are **OPEN FOR BUSINESS**, and the committee have SEA DAYS in their sights, with fingers crossed that not only restrictions stay away but we hope Mother Nature is kind to us.

Before Christmas and Sea Days we have to hold our **AGM**.

**So this Newsletter comes with an invitation to all.**

**The Annual General Meeting will be held at the Museum on 15<sup>th</sup>. December 2020 @ 2pm**, followed by the General Meeting where we plan for the 2022 Sea Days Festival. We would love to see you there. You will be made most welcome. With a New Year just around the corner we have a lot to plan for and would love a few extra pairs of hands to help.

As I mentioned we have the ‘SEA DAYS FESTIVAL’ in our sights.

The New Year weekend January 2022.

Some planning has been started in the hope that all can go ahead in these very uncertain times, as we stay very positive.

## **LOCAL HISTORIAN; CHERYL GLOWERY**

Cheryl very generously has shown her support for the museum and has put her hand up to be Guest Speaker with her very knowledgeable, relaxed talks “around the table” on history from the area.

Mark your calendar, I am sure you will enjoy the visit.

THEN there are always our delish “**Devonshire Teas**” to be enjoyed under the shade of the Peppercorn Tree that was planted, when the house was built, back in 1881.

This house and its grounds hold a wealth of history from the time when it was built to the present day, BUT be warned, leave yourself plenty of time as there are many articles to enjoy reading and items to reminisce over. Valued items are always being donated and added to the collection. Recently photos

have been donated to compliment the already extensive collection, taking us back in time to the early 1900’s.

This museum not only tells of the fishing industry but it tells the story of a town that started from nothing and became very important to Victoria



**medicare**

## Get proof of your COVID-19 vaccinations



### If you **do** have a Medicare online account

#### The Express Plus Medicare app



1. Select **Immunisation history** from **Services**.
2. Select your name, then **View COVID-19 digital certificate**.

#### Medicare online account via myGov



1. Sign in to myGov and select **Medicare**.
2. Select **View immunisation history** on the **Immunisation history** tile.

### If you **don't** have a Medicare online account



The first thing you need to do is link Medicare to your myGov account.

There's a guide on how to do this at [servicesaustralia.gov.au/linkmedicare](https://servicesaustralia.gov.au/linkmedicare)

Once you've linked, you can get your **immunisation history statement** or **COVID-19 digital certificate** using the steps above.

You can also ask your vaccination provider to print your immunisation history statement.

If you're not eligible for Medicare, you can get proof of your vaccinations using the Individual Healthcare Identifiers service through myGov.

[servicesaustralia.gov.au/covidvaccineproof](https://servicesaustralia.gov.au/covidvaccineproof)

The staff at the Rural Transaction Centre can also assist you in setting up a myGov account and accessing your vaccination certificate.

## FOSTER SEAFOODS



35 Main Street, Foster

Ph: (03) 5682 2815

With catches of Inlet fish arriving within the shop on a daily basis and our vessels returning from extended trips into Bass Strait, you can be assured that the quality is second to none.

We also have an extensive list of products with very competitive prices.

## Danny O'BRIEN MP

Member for Gippsland South

54B Cunninghame St, Sale VIC 3853

03 5144 1987

[danny.obrien@parliament.vic.gov.au](mailto:danny.obrien@parliament.vic.gov.au)

[www.dannyobrienmp.com.au](http://www.dannyobrienmp.com.au)

*Working for Gippsland South*

[f](#) [t](#) [i](#) /dannyobrienmp

**LIB** NATIONALS for Regional Victoria



## DIGITAL - TV - ANTENNAS

TV & PHONE POINTS

TV & VCR TUNING

HOME THEATRE ALARM INTERCOM INSTALLATIONS

**ANDY**

PH: 0412 445 554

COMMERCIAL UPGRADES  
DIGITAL INSTALLATION  
SPECIALIST

ABN 69 653 510 722  
ACA REG B18282VIC



Some exciting changes coming your way

Stay tuned for further updates

Main Street Welshpool, Vic 3966

Contact: **SHANE**

Ph/Fax: (03) 56881309

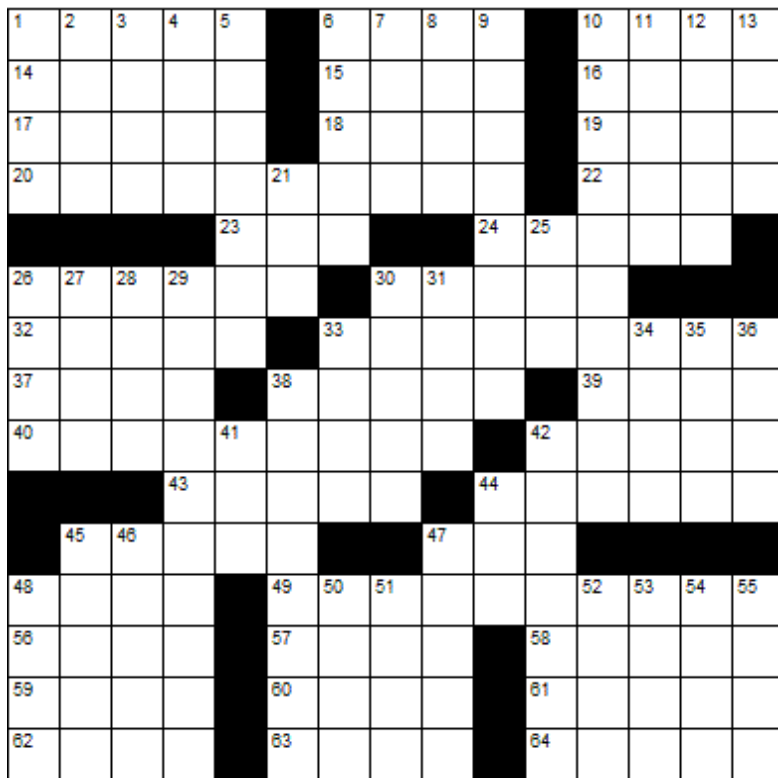
## BUTTERFLY PASSENGER SERVICE

Butterfly Passenger Service is available to all South Gippsland residents who have to travel to shops or to attend medical appointments during COVID 19 restrictions.

If you don't have your own transport and need to be somewhere please call Kerry on 0411 334 236 to discuss your travel requirements and get a quote.



# CROSSWORD



## Down

1. Fabricated
2. By mouth
3. Donated
4. Relating to urine
5. Framework of strips of wood
6. Malicious burning
7. Hireling
8. Indian dress
9. A subatomic particle
10. Eclipse
11. He flies a plane
12. Mixture
13. "\_\_\_ we forget"
21. Ribonucleic acid
25. Hearing organ
26. French Sudan
27. Astringent
28. Coarse file

29. A supplementary part
30. Corrupt
31. 1 1 1 1
33. Urgent request
34. A crumbling earthy deposit
35. Aquatic plant
36. Views
38. Popular terrier
41. Black gunk
42. Evermore
44. Spot
45. Small African antelope
46. Small boat
47. Bicycles
48. Implored
50. Arab chieftain
51. Hubs
52. Hindu princess
53. Mimics
54. Hefty volume
55. Historical periods

## Across

1. Tycoon
6. Church alcove
10. Iridescent gem
14. Great black cockatoo
15. Genuine
16. Wicked
17. Lifeboat crane
18. Achy
19. L L L L
20. Powered by electricity
22. Part of a plant
23. Hotel
24. Cantankerous
26. Rattle
30. Synagogue scroll
32. Winged
33. Vistas
37. Craving
38. Foreign
39. Dell
40. Balsam or touch-me-not
42. Make a counterfeit
43. Unit of weight for gems
44. A coarse linen cloth
45. Autumn color
47. Tavern
48. Baby buggy
49. Careful
56. Connects two points
57. Frenzied
58. Steam
59. Black, in poetry
60. Bloodsucking insects
61. Colonic
62. Weight loss plan
63. Goddess of discord
64. Ascends



*Winning entry will receive a free coffee and cake from the Welshpool Café & Supermarket*



## LAST MONTHS CROSSWORD RESULT

|   |   |   |   |   |   |   |   |   |   |   |   |
|---|---|---|---|---|---|---|---|---|---|---|---|
| D | O | G | E | B | A | T | H | F | I | A | T |
| O | D | I | N | A | B | H | O | R | U | R | S |
| P | O | N | D | T | E | E | T | H | S | O | I |
| E | R | G | O | T | L | I | B | I | D | I | N |
| E | R | I | S | R | E | N | A | L |   |   |   |
| B | E | R | S | E | E | M | D | O | W | L | A |
| I | N | S | E | R | T | E | D | N | I | C | H |
| B | E | N | S | I | E | G | E | C | I | A |   |
| S | M | A | S | H | W | A | G | E | R | E | R |
| A | P | P | E | A | L | L | O | Y | A | L | T |
|   | O | I | L | E | D | S | A | T | E |   |   |
| M | O | O | N | R | I | S | E | S | S | C | R |
| E | R | R | S | B | I | L | L | S | H | A | L |
| T | A | C | O | I | O | T | A | S | E | T | A |
| A | L | A | R | N | A | M | E | T | E | N | S |

Sponsored by: **Welshpool Supermarket**

Entries must be received before

15<sup>th</sup> December, 2021

All correct entries will be put into a hat and the winner will be drawn by Supermarket staff. No correspondence will be entered into etc.

Please remember to double-check your spelling.

**Remember to include your name, contact number and date on your returned entry, Thank you.**

**Winner of the October Crossword:**

Arie Bos



# Community Group Listing

**\*Welshpool & District Advisory Group** – Contact: Linda Razinger 03 5688 1051

**\*Welshpool Fire Brigade** – training every Thursday night 7.30pm

**\*Welshpool Recreation Reserve** – Contact: Madelaine Mason 0409 976 211

**\*Welshpool Basketball Association** – Contact: Madelaine Mason 0409 976 211

**\*Prom Coast Soccer Club** – <http://www.promcoastsoccerclub.com.au/>  
Contact: Shellie Cashmore 0419 322 384

**\*Welshpool Memorial Hall** – Contact: Alan O'Neill 5688 1419

**\*Friends of Agnes Falls** – <https://www.facebook.com/FriendsOfAgnesFalls/>

**\*Port Welshpool Fishing Club** – Contact: Jenny Horner 0428 862 028

**\*Port Welshpool Working Group** – Contact: Alma Mattingley 0427 310 599

**\*Welshpool & District Playgroup** – <https://www.facebook.com/WelshpoolPlaygroup/>

**\*Welshpool & District Horticultural Society** – meeting every 2<sup>nd</sup> Wednesday of the month.  
Contact: Tom Reakes Ph. 0429966002

**\*Port Welshpool & District Maritime Museum** – Email: [pwmuseum@gmail.com](mailto:pwmuseum@gmail.com)

**\*Port Welshpool Coast Guard** – Contact: Peter Carrolan 0417 372 059

## Welshpool & District Advisory Group

On Tuesday 23<sup>rd</sup> November, the Welshpool and District Advisory Group (WDAG) held their AGM at the Rural Transaction Centre.

We welcomed in a returning committee and also welcome a few new members to our general committee.

President Eddie Fowler thanked the committee, staff and volunteers of WDAG, the Transaction Centre and Op Shop for their ongoing commitment to this invaluable community asset. The committee discussed the upcoming year and are looking forward to meeting more regularly. The Welshpool and District Town Plan is now outdated, so we are planning to meet with council to arrange a town meeting and discuss what the local community would like to see developed in the area.

If you have any thoughts or ideas as to what you think Welshpool and the surrounding area needs, please keep your ideas in mind and join us at our town meeting to have your say. Information will be made available once a meeting time is organised.

The committee of WDAG look forward to 2022 and continuing to service Welshpool.

## Christmas Gift Drive

Toora & Foster Community Bank Branches are partnering with Manna Gum Community House and St Vincent de Paul this Christmas to provide a brighter Christmas for those in need.

If you would like to donate you can simply drop off donations at any of the locations listed below before 9th December 2021. Volunteers from Vinnies and Manna Gum will collect the donations and distribute accordingly around our local Gippsland area.

Toora Bendigo Bank Branch - Mon-Fri 10am-3pm

Foster Bendigo Bank Branch - Mon-Fri 9:30am-4pm

Welshpool Agency - Mon-Fri 10am-3pm

Manna Gum Community House - Mon-Thurs 10am-3pm

Make a donation to the Manna Gum Christmas Drive through Givenow.

<http://www.givenow.com.au/cornerinlet>

Donations received through GiveNow will be used to purchase specific items for families in need.

### Gift Ideas

#### Outdoor/Sporting Equip

- kites, bat & ball, beachwear, netball / football / soccer ball

#### Games/Toys

- lego, puzzles, board games

#### Books

- diaries, colouring books, puzzle books

#### Art & Craft

- stationery, sketch books, art pencils/paints

#### Baby Goods

- please carefully check age range and only purchase safe & non-toxic item

~Please Do Not Wrap Gifts~

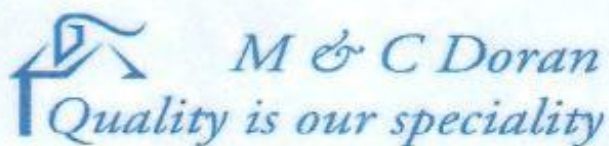
### Voucher Ideas

Vouchers enable the recipient to purchase something they need, or even a gift for a loved one they couldn't otherwise purchase.  
~Local Businesses Preferred~

- Local Café / Bistro Vouchers
- Local Store Vouchers
  - Gift
  - Shoes
  - Clothing
  - Haberdashery
  - Fruit & Veg / Supermarket
  - Hardware
  - Stationary
  - Toys
  - Hairdresser / Massage
  - Plant / Nursery
- Local Mechanic Vouchers
- Fuel Vouchers
- iTunes / Google Play Vouchers
- Department Store Vouchers



## LOCAL SERVICES.....



**Michael Doran**  
Qualified Carpenter & Joiner

16 Turnbull Street Ph. 03 5688 1229  
Port Welshpool VIC 3965 Mb. 0429 038 409  
Email: buildingservices@mcdoran.com.au Fax. 03 5688 1377



**John Hoy**  
Trade qualified Farrier  
(25 years experience)

0447 229 390

**Lawn mowing & Maintenance, Rubish removal, Painting  
Window cleaning, Gutters cleaned, High presure washer**

**Lawn mowing & Maintenance**

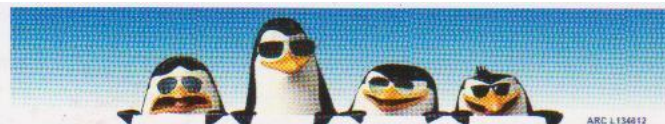
Free Quotes reasonable rates local tradesman



Dave Mcleish  
Port Welshpool

**0417 538 683**

davemcleish@live.com.au



**AAC MOBILE AUTO AIR CONDITIONING**

*Maintenance & Repairs to...*

**TRUCKS \* TRACTORS \* MACHINERY \* PASSENGER & FOOD TRANSPORT VEHICLES**

Ian Dubignon **M. 0448 761 642**

**KERRY McNARN**

Civil Celebrant

Toora  
Mob: 0402 100 651



**Celebrating life from beginning to end**



**ALBERTON TIMBER & TREATMENT PLANT P/L**

FOR ALL YOUR TREATED PINE NEEDS

POSTS SAWN TIMBER DECKING CUSTOM TREATING

SLEEPERS NUTS AND BOLTS PALINGS AND MORE

SOUTH GIPPSLAND HIGHWAY, ALBERTON, VIC, 3971

Ph (03) 5183 2437

Fax (03) 5183 2659

Email sales@albertontimber.com.au

**CONCRETER**



**SOUTH GIPPSLAND CONCRETE**  
**ALL THINGS CONCRETE**  
**ON-SITE TIMBER MILLING**

**0400 840 729**

**WWW.SGCONCRETE.COM.AU**

**TV & DATA SYSTEMS**

Digital Antennas, TV wall mounts, Data &  
Computer outlets, Home Theatre, Hidden  
Wiring, Networks, Offices, CCTV, Repairs,  
Equipment Installations

**Licensed Cable Installer**

Domestic, Commerical & Industrial

**Steve Mooney 0427 257 222**

**SOUTH GIPPSLAND  
SEPTIC TANK CLEANING**

**Also Portable Toilets Hire**

**Call Chris Whittle**

**(03) 5688 1572**



**Kirwan Builders**

**TK Construction**

*"for all your building needs"*

TK Construction - Michael Kirwan

6565 South Gippsland Highway HEDLEY VIC 3967

P: 03 5184 1223 | M: 0428 911 900

E: kirwanbuilders@gmail.com

HIA MEMBERSHIP: 813 711 | DB-U: 20399 | A.B.N: 40 896 158 242

**ME CHECKING IN  
ON ALL OF MY BUDDIES**

**TO MAKE SURE THEY'RE  
HAVING A GOOD DAY**

RD



Foster Golf Club  
7 Reserve Street  
Foster Victoria  
3960

19 Chantelle Peters (03) 5682 2272  
golfclub19@outlook.com.au

## ANTHONY BRAVINGTON

### Cleaning & Property Maintenance Contractor

- Commercial Cleaning, Domestic Cleaning and all types of Property Maintenance
- Accommodation Contracts
- Office Building Contracts
- Retail Shops Contracts
- School Cleaning Contracts
- Builders Cleans
- All Property Maintenance etc
- Window Cleaning
- Carpet Steam Cleaning

#### THURSDAYS & FRIDAYS ONLY

|                 |       |
|-----------------|-------|
| 1 bedroom house | \$70  |
| 2 bedroom house | \$90  |
| 3 bedroom house | \$120 |
| 4 bedroom house | \$150 |

Call Anthony for all your cleaning needs

**Mobile: 0418 146 986**

**Email: anthonybravington@bigpond.com**



**J.J. Richards**  
& Sons

### WASTE DISPOSAL

- Permanent bins & clean up skips
- Commercial, household or farm waste
  - Cardboard recycling
- Weekly, fortnightly, monthly
  - 1.5M3 OR 3M3 BINS
- Locally owned & operated

CALL OR EMAIL FOR A QUOTE

PH: 03 9794 5722

[www.jjswaste.com.au](http://www.jjswaste.com.au)

[operations.melbourne@jjswaste.com.au](mailto:operations.melbourne@jjswaste.com.au)

*"Your local name  
in the waste game"*

**KERRY McNARN**

Pet Reiki

Toora  
Mob: 0402 100 651



**after all they're only human!**



# Music Word Search

S B F H Y T P A K F E L T S D A N I Z B E I  
K U C L O R A S C T T E N T K U H F B R A A  
V Y E E A S K P R O E D C A A I L S L A S F  
J D T H G A R O J V M G V C C Z V O U A S D  
W L L T N A F B E H P E G C J B E A R M T S  
E L N S H H V R I R O R P A R W B T K F R G  
H X Z S L P E I X T I L E T H B Z C A F V Y  
M F F E Z T M L S S Y I Y O D M I F L M R E  
L J T Q R L N E C I M N J S B Q H A E C P E  
C T N A B I R P L Y W E N J L T H T T X I I  
M T U A R G M E A S U R E C H D R Y O W T L  
L Q R J S E I B Y F X C T G E O D T P C C T  
J G D E A T P W H O L E I T N X S Z R H H K  
E B P K B T A E S Q K E T O R E Q A B X P J  
J U H S B L X F A S J O M N R T B M F I I M  
X A X E F J E L F T D E Y P I U F D A J M O  
D N Q P U L F A C E O Q I E B J U N N W U D  
C P K E P L D M L Y Y N G Y S V O M Z P K F

METRONOME  
SHARP  
REST  
TIE  
MEASURE  
TEMPO

EIGHTH  
STACCATO  
QUARTER  
WHOLE  
TREBLE  
LEDGER LINE

FORTE  
PITCH  
STAFF  
PIANO  
BAR  
DOTTED HALF

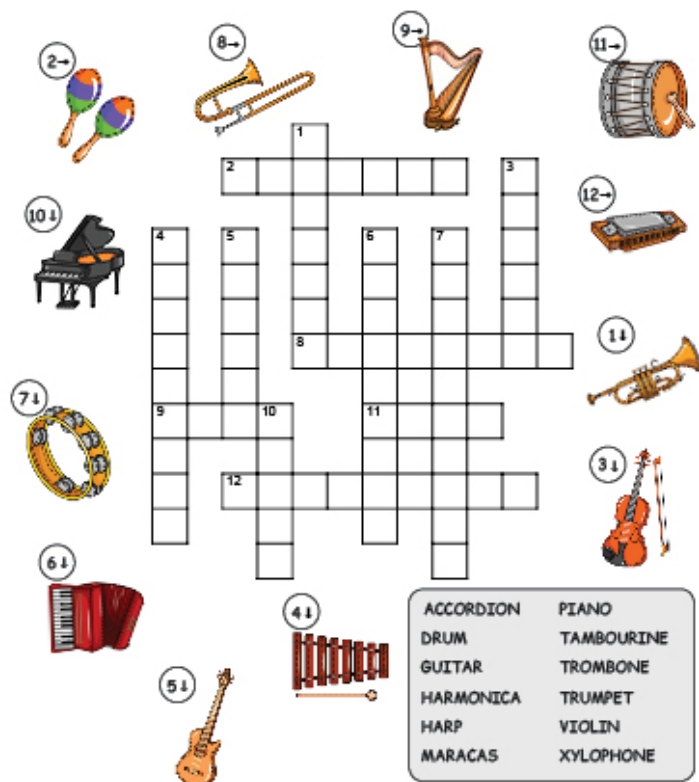
HARP  
FACE  
FLAT  
BASS  
PRESTO  
REPEAT

I hate it when  
I'm singing a  
song and the  
artist gets the  
words wrong.

|   |   |   |   |   |   |   |   |
|---|---|---|---|---|---|---|---|
|   |   |   | 6 |   |   |   |   |
|   |   |   | 1 | 9 |   | 7 | 8 |
| 5 |   |   |   |   | 3 | 4 | 1 |
|   |   |   |   |   |   | 5 |   |
|   |   | 3 |   |   | 4 |   | 9 |
|   | 6 | 2 |   | 1 |   | 3 |   |
|   |   |   | 3 | 8 |   |   |   |
|   |   | 7 |   |   |   | 6 | 5 |
| 4 |   |   |   |   |   |   | 1 |

## Musical Instruments

DIRECTIONS: Fill in the crossword puzzle grid with the name of each musical instrument following the numbers and direction indicated. Use the word bank if you get stuck.



Singing in the shower  
Is all fun and games  
Until you get  
Shampoo  
in your mouth,  
Then it just  
Becomes a soap opera.



## October Solution

|   |   |   |   |   |   |   |   |   |
|---|---|---|---|---|---|---|---|---|
| 6 | 9 | 8 | 5 | 4 | 3 | 7 | 2 | 1 |
| 5 | 1 | 7 | 9 | 8 | 2 | 4 | 6 | 3 |
| 4 | 3 | 2 | 6 | 7 | 1 | 5 | 9 | 8 |
| 2 | 6 | 4 | 3 | 5 | 8 | 9 | 1 | 7 |
| 9 | 5 | 3 | 1 | 6 | 7 | 8 | 4 | 2 |
| 8 | 7 | 1 | 4 | 2 | 9 | 3 | 5 | 6 |
| 3 | 2 | 5 | 7 | 9 | 6 | 1 | 8 | 4 |
| 1 | 8 | 9 | 2 | 3 | 4 | 6 | 7 | 5 |
| 7 | 4 | 6 | 8 | 1 | 5 | 2 | 3 | 9 |