

Welshpool & District Horticultural Society

The Welshpool & District Horticultural Society began 60 years ago and has seen many changes over the years. With our 60th Anniversary Spring Garden Show cancelled due to Covid restrictions, we have planned a couple of events to honour the occasion.

On Saturday 31st October we held a Market Day and Plant Sale at the Welshpool Hall. This was a HUGE success with over 290 visitors attending over the day, many came from all over Gippsland from Metung to Warrigal, who enjoyed the experience in a Covid-safe way. Thanks to South Gippsland Shire for the provision of Covid safe signage and hand sanitiser. On what was meant to be our 60th consecutive Spring Show, it was great to be able to enjoy the day with fellow garden lovers!!

Our second event is something unique for these times and our group. We have created a digital Virtual Show, featuring videos and photographs of Club Members' entries. The Virtual Show presents the beauty of our members' gardens and the importance of family and pets in our life during 2020! A huge thank you to all the entrants for embracing the technology to participate and to Matt Langdon for his invaluable technical support. You can access the Virtual Show via our Facebook Page "Welshpool and District Horticultural Society".



Pictured above Tom Reakes and Arie Bos, two of the participants in the Virtual Show.

Disclaimer

This newsletter is an independent self-funded publication produced by staff and volunteers of the RTC and it does not reflect the opinions of the Committee members, South Gippsland Shire, or the Department of Planning and Community Development.



TRADING HOURS

MON - FRI

10.00AM - 3.00PM

- WELSHPOOL COMMUNITY LIBRARY
- BENDIGO BANK AGENCY
- CENTRELINK AGENCY
- V/LINE TICKETING OFFICE
- ROOM HIRE AVAILABLE
- PASSPORT APPLICATIONS
- COPY & PRINT SERVICES

Other services by appointment only

- Diabetes Clinic – 5683 9780
- Gibson Accounting – 5176 2031
- Royal Flying Doctors – 03 8412 0480



Centrelink Website

The Centrelink website (www.centrelink.gov.au) has been incorporated into the Department of Human Services website humanservices.gov.au. The new site is a convenient, single entry point for health, social and welfare payments and services.

Any questions regarding your payments or entitlements, this would be your first port of call.

- ***You are able to register online and access details of your account.***
- ***Find out the latest information regarding services.***
- ***Calculations can be done to work out family assistance.***
- ***Access forms and brochures.***

A touch screen computer is available at the Welshpool Rural Transaction Centre for your use.

Staff at the Centrelink agency are able to assist you with registration etc.



VLINE BUS SERVICES

**Purchase tickets at the
Rural Transaction Centre or
collect a VLINE Bus Timetable**

DIABETES CLINIC

Wednesday 25th November

If you would like an appointment
or have any queries, please contact

Karen on 03 5683 9780



Gibson Accounting

Kieran Olree

PH: (03) 5176 2031

Fax: (03) 5174 6313

101 Hotham Street
Traralgon, Vic 3844

Email: kieran@gibsonaccounting.com.au

Kieran Olree is at the RTC every Wednesday

By appointment only - **(03) 5176 2031**

For more information and all the latest tax
updates and handy hints for tax time,
please visit Gibson's website:

www.gibsonaccounting.com.au

Welshpool Op Shop & Nursery

The weather is improving and the season is upon us for those who like to dabble in the garden. The nursery have plenty of flower and vegetable seeds available to purchase as well as a variety of seedling ready to be planted.

We also have a large assortment of potted plants including flowers, succulents, bromeliads, gum trees, natives and more.

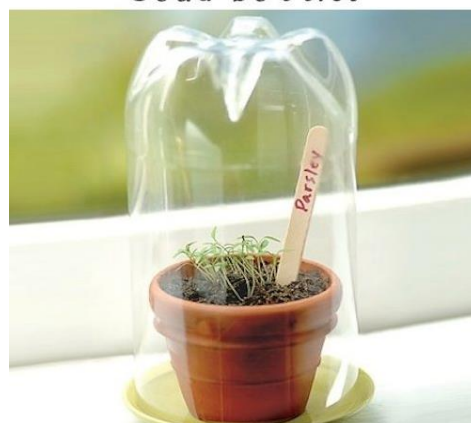
The Welshpool Op Shop is open Monday to Friday 10am to 4pm. Call in and say Hi to our wonderful volunteers and find yourself a bargain or two while you're there. Covid rules apply.



Gardening Tips



Make a mini **greenhouse** with a recycled, plastic soda bottle.



Welshpool RTC



**A wide range of shorts available,
get in early ready for Summer
Hi Vis and Casual wear
Call in or phone 56881051**



The RTC have a wonderful assortment of locally made crafts available in store. With Christmas just around the corner, call in to view the many beautiful items on offer.



Welshpool Community Library

'Open for business'

The Welshpool Community Library will be open for browsing and borrowing once again from Wednesday 25th November.

Covid Rules will apply and all visitors must register your name, number and Library membership number on entry.

-All visits are limited to a maximum of 15 minutes.

-Please use hand sanitiser on entry.

-Face masks are mandatory.

A Librarian will be available Wednesdays 12 noon to 2pm for any enquiries.

For your safety and ours we cannot deviate from these rules.

Can't come in? Chat to us online www.wgrlc.gov.au or call on 5682 1735. We are here to help

We look forward to having you back!
West Gippsland Libraries

Christmas Gift Drive

Toora & Foster Community Bank Branches are partnering with Manna Gum Community House and St Vincent de Paul this Christmas to provide a brighter Christmas for those in need.

If you would like to donate you can simply drop off donations at any of the locations listed below before 4th December 2020. Volunteers from Vinnies and Manna Gum will collect the donations and distribute accordingly around our local Gippsland area.

Toora Bendigo Bank Branch - Mon-Fri 10am-3pm

Foster Bendigo Bank Branch - Mon-Fri 9:30am-4pm

Welshpool Agency- Mon-Fri 10am-3pm

Manna Gum Community House - Mon-Thurs 10am-3pm

Gift Ideas

Outdoor/Sporting Equip

- kites, bat & ball, beachwear, netball / football / soccer ball

Hair & Beauty

- make-up, perfume/aftershave, toiletries, jewellery

Games/Toys

- lego, puzzles, board games

Books

- diaries, colouring books, puzzle books

Art & Craft

- stationery, sketch books, art pencils/paints

Bags

- backpacks, purses, wallets

Baby Goods

- please carefully check age range and only purchase safe & non-toxic item

~Please Do Not Wrap Gifts~

Voucher Ideas

Vouchers enable the recipient to purchase something they need, or even a gift for a loved one they couldn't otherwise purchase.

~Local Businesses Preferred~

- Local Cafe / Bistro Vouchers
- Local Store Vouchers
 - Gift
 - Shoes
 - Clothing
 - Haberdashery
 - Fruit & Veg / Supermarket
 - Hardware
 - Stationery
 - Toys
 - Hairstresser / Massage
 - Plant / Nursery
- Local Mechanic Vouchers
- Fuel Vouchers
- iTunes / Google Play Vouchers
- Department Store Vouchers



Welshpool & District Horticultural Society

More beautiful photos from the Virtual Spring Show.....



Welshpool Memorial Hall Improvements

Thanks to the fund raising efforts of Committee members past and present we have finally been able to repair the Western pathway and doors that have been in a sad state for some time. We were also able to, with the assistance of a grant from DELWP, add in disabled access to this area.

Many thanks to Designed Enviroments (Toora) for the plans, South Gippsland Concrete, Yarram Engineering, Throckmorton Building Services, and TK Construction for getting this project completed.

We were also able to take this opportunity to thank a couple of outgoing Committee members. Eddie Fowler had given many years service, dedication and resources. Joy Kipps, legendary for organising "Elvis" and also organising the catering for many events. The jelly slice will be sadly missed....

If you are interested in giving back to the community by volunteering your time we would love to hear from you, as would other groups around town mentioned on the "Community Group listing" in this newsletter.



****Open Saturday, Sunday & Monday 10am – 4pm****

Phone 0400 110 318

the Olive Branch 35 Main Street
Welshpool
Prom Country

NO MASK

NO ENTRY

STEP BACK IN TIME!

Plenty of Gift Ideas for Xmas

Bike Hire on Hold at the moment – Due to Covid



*Drinks and Snacks.
Coffee and Cake*



*Retro, Collectables and Bric a brac
We Buy and Sell*



Supporting
local products
Honey, Jams,
Gift Ideas etc.
Fresh Product
when available

ALL visiting the area will be
asked for ID



Easy Traditional Christmas Cake



Start this traditional fruit cake recipe two days earlier to ensure it's ready for your big Christmas feast.

INGREDIENTS

1 cup (160g) sultanas	1 ¾ cups (280g) currants
1 ½ cups (225g) raisins, chopped	½ cup (85g) mixed peel
1 cup (200g) glace cherries, chopped	250g butter
1 cup (250ml) dark rum or apple juice	1 cup (220g) brown sugar
1 ½ cups (210g) slivered almonds	4 eggs
¾ cup (110g) plain flour, sifted	1 tsp mixed spice
¾ cup (110g) self-raising flour, sifted	1 tsp nutmeg ground
2 tsp cinnamon ground	icing sugar to dust

METHOD

Step 1. Combine sultanas, currants, raisins, mixed peel, glace cherries and rum in a large bowl. Cover and set aside, stirring occasionally, for 2 days to macerate.

Step 2. Preheat oven to 170C. Grease and line a 23cm square (base measurement) cake pan or 25cm round (base measurement) cake pan with 3 layers of baking paper, extending paper 5cm above the rim.

Step 3. Using an electric mixer, beat the butter and sugar for 5 mins or until pale and creamy. Add eggs, 1 at a time, beating well after each addition.

Step 4. Stir the almonds into the fruit mixture. Add the fruit mixture to the butter mixture with the combined sifted flours and spices. Stir until well combined. Spoon into prepared pan. Bake for 2 hours or until a skewer inserted into the centre of the cake comes out clean. Remove cake from oven. Wrap the pan in a tea towel and set aside to cool completely. Turn cake out of pan and dust with icing sugar to serve.

Mango Cheesecake Dessert Cups



INGREDIENTS

250g cream cheese, at room temperature
1 cup thickened cream
125ml double cream
¼ cup caster sugar
1 lemon, rind finely grated
1 tbsp lemon juice
1 small mango, peeled, thinly sliced
passionfruit pulp, to serve
mint leaves, to serve
edible flowers, to serve (optional)

EQUIPMENT

4 x 250ml glasses



Step 1. Beat cream cheese in a bowl until smooth. Add thickened cream, double cream, sugar and lemon rind. Beat for 2-3 minutes, until thick and creamy. Stir through lemon juice until combined.

Step 2. Dollop some cream cheese mixture in the base of four 250ml glasses. Top with sliced mango. Continue layering and finish with mango slices. Top with passionfruit pulp, mint leaves, and edible flowers if you like.

E.W. & H.P. FOWLER
WELSHPOOL OUTDOORS &
ORIGIN GAS SUPPLIES

19 MAIN STREET
WELSHPOOL VIC 3966
PH: 0356881304
EMAIL: welshpooloutdoors@bigpond.com



WE'RE HERE TO STAY

QUAD BIKE COMPLIANT SAFETY STANDARD

Compliant quad bikes available now that meet the Consumer Goods (Quad Bikes) Safety Standard.

3 YEAR WARRANTY

CFMOTO

CFMOTO 400

CFMOTO

CFMOTO.COM.AU

Distributed by Mojo Motorcycles

• Albury (02) 6021 4392 • Ballarat (03) 5339 4200 • Carrington (02) 4076 1151 • Donald (03) 5497 1611 • Ferntree Gully (03) 9758 8000
 • Hamilton (03) 5572 4327 • Kilmore (03) 5782 1616 • Lake Boga (03) 5037 2389 • Leongatha (03) 5642 4044 • Portland (03) 5523 5399
 • Red Cliffs (03) 5024 3610 • Shepparton (03) 5849 1577 • Tootoowin (03) 5998 3216 • Traralgon (03) 5174 1702
 • Warragul (03) 5622 3875 • Warramboul (03) 5561 1700 • Welshpool (03) 5688 1304 • Whittlesea (03) 9716 2019

Welshpool Golf Club

Our Ladies played the final round of their Championship with Rachel Brown the winner and Sue Brown the runner up. Fridays Chicken Run won by P Delaney 19pts, R/U Russel Barwick 18pts. Saturday saw the Mens Foursomes Championship. Scratch winners B MacPherson & M Roberts with 95 on a c/b. Handicap winners R Barwick & H Barlow on 73.5. R/U A Hayes & G Wilkinson n 74.5 with L Pope & P Delaney on 74. NTP went to B MacPherson on the 6th. Sunday was the Mixed Foursomes Championship. Scratch was won by P Delaney & D Stait with 95. Handicap winners R Barwick & D Walker on 70.5 on a C/B. R/U P Delaney & D Stait also 70.5 and H Barlow & T Latch on 71. NTP went to R Barlow on 6th.

Well done to all....



"If anyone rings tell them I'm on a course."

SCHOOLS ARE BACK
TAKE EXTRA CARE
DURING SCHOOL TIMES



Welshpool Op Shop & Nursery

Monday to Friday

10am – 4pm

PH: 0474 591 014



RTC Rooms for Hire

Office Hire : \$11 per hour

\$33 per day

Consulting Room : \$27.50 per day

Meeting Room Hire : \$38.50 per day



West Gippsland
Libraries

Located at the Welshpool RTC

Open Monday to Friday

10am to 3pm



**If You Have Crazy Friends
You Have Everything**



WELSHPOOL POST OFFICE

20 Main Street Welshpool Phone: 5688 1419

Email: welshpoolpostal@bigpond.com

**Christmas Trading Hours for
November and December.**

Monday – Friday 9am – 5pm

Saturday 9am – 12 noon.



Find us on
Facebook

New in Store...



JOHN DEERE

CASE III

Series Toy Tractors

also available

Port Welshpool & District Maritime Museum

Now that the restrictions are lifted and we are able to move around more freely with a few restrictions; social distancing and mask wearing along with limited numbers.

“WE ASK FOR YOUR HELP PLEASE”

If you're looking for a new interest?

Then look no further.....as

We at the museum are short on volunteers and would like to invite you to join us.

Simple tasks are asked and all at your ability and time.

Until now we have been floating along quite nicely, even though you can never have too many volunteers, but, some of our volunteers have left the area and others having family commitments, making us shorthanded.

We invite you to Please give us consideration, you may like to call us on 0481385122 [Fran] or Janet 0413199776 to discuss further, we would love to hear from you. Or call in we are open weekends 12.30 to 4pm.

All in a pleasing environment and you would be “helping to keep history alive”.

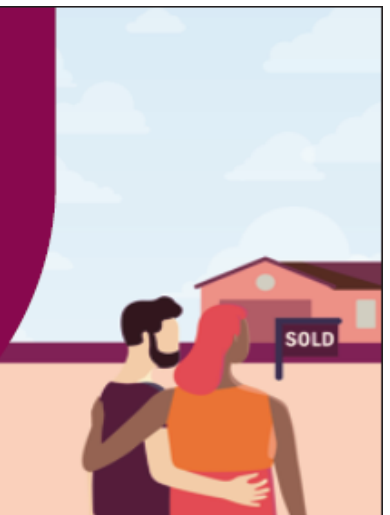


Our new Complete Home Loan...

...takes care of you completely. Great rates and 100% offset make the Complete Home Loan one of our most exciting home loans yet!

So whether you're buying your first or next home, refinancing or investing, the Complete Home Loan has you covered.

Chat to a home loan specialist today, phone our Welshpool Agency on 5688 1051 or search Bendigo Bank home loans.



[bendigobank.com.au](https://www.bendigobank.com.au)

Terms and conditions, fees, charges and lending criteria apply. All information including interest rate is current as at 7 September 2020 and may be subject to change. Full details available on application. Credit provided by Bendigo and Adelaide Bank Limited ABN 11 068 049 178 Australian Credit Licence 237879. A1419239 OUT_1520685, 22/09/2020

Welshpool
Supermarket
& Café

'Home Made Cakes'



OPEN 6 DAYS A WEEK

Monday to Friday: 9am-4pm

Saturday: 9am-3pm

Sunday: Closed

'Call in for a Latte'
Ph. 03 5688 1452



FOSTER SEAFOODS



35 Main Street, Foster

Ph: (03) 5682 2815

With catches of Inlet fish arriving within the shop on a daily basis and our vessels returning from extended trips into Bass Strait, you can be assured that the quality is second to none.

We also have an extensive list of products with very competitive prices.

Danny O'BRIEN MP
Member for Gippsland South



54B Cunninghame St, Sale VIC 3853
03 5144 1987
danny.obrien@parliament.vic.gov.au
www.dannyobrienmp.com.au

A better deal

for Gippsland South

Funded from Parliamentary Budget

[f](#) [t](#) [i](#) /dannyobrienmp



Bistro & Bar Meals:

Wed - Sun - 5pm-9pm
Fri-Sun 12noon-2pm & 5pm-9pm

Takeaway meals & drinks

Wed-Sun 5pm-9pm
Fri-Sun 12noon-2pm & 5pm-9pm
Call 5688 1309 to place your order
Bar & Bottle Shop OPEN 7 Days a week

Main Street Welshpool, Vic 3966

Contact: **SHANE**

Ph/Fax: (03) 56881309

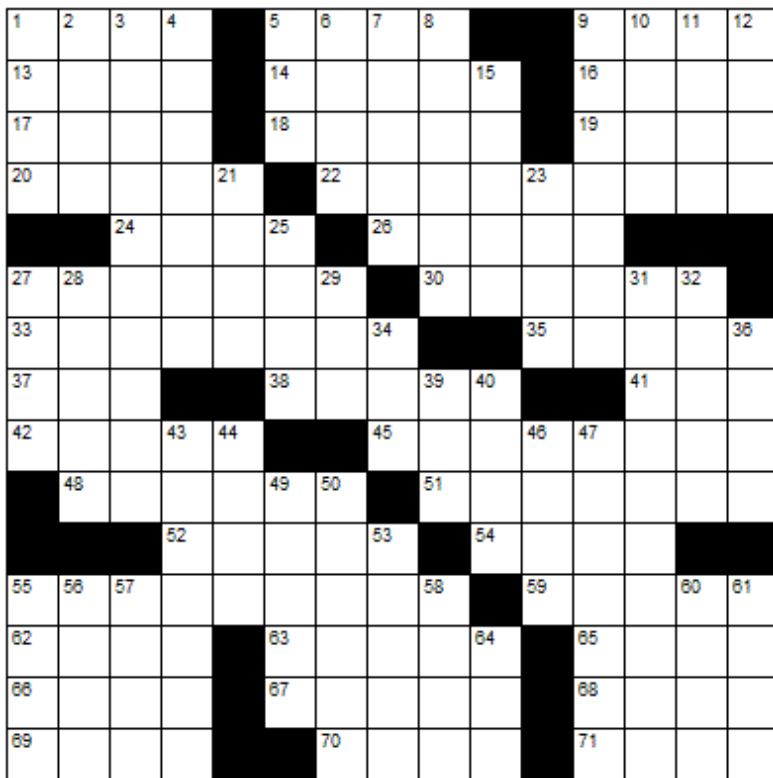
**BUTTERFLY
PASSENGER SERVICE**

Butterfly Passenger Service is available to all South Gippsland residents who have to travel to shops or to attend medical appointments during COVID 19 restrictions.

If you don't have your own transport and need to be somewhere please call Kerry on 0411 334 236 to discuss your travel requirements and get a quote.



CROSSWORD



Down

1. Not guys
2. Death notice
3. Donor
4. Avoiding detection
5. S
6. Defrauds
7. Wooden box
8. A task requiring a trip
9. Experimental
10. Midday
11. Remnant
12. Collections
15. Busybody
21. Gambling game
23. Lairs
25. A flat circular plate
27. Resist
28. Habituate
29. Barbie's beau
31. Unity
32. Shack
34. Zero
36. Neat
39. Coniferous tree
40. Wicked
43. Provide commentary
44. Largest continent
46. Quaint outburst
47. A small stream
49. Kick out
50. Vacation destination
53. Adult male singing voice
55. Church alcove
56. Add
57. P P P P
58. Bristle
60. Back
61. Car
64. Timid

Across

1. Lots
5. Behold, in old Rome
9. Terminates
13. Foment
14. Apologetic
16. Not less
17. Connects two points
18. Type of drum
19. He writes in verse
20. Cut of meat
22. Team rankings
24. Skedaddled
26. Go in
27. A member of the beat generation
30. Light sweet yeast-raised roll
33. Not selected
35. Dash
37. Slice
38. A cutting tool
41. 56 in Roman numerals
42. Swedish money
45. Uniformed
48. Found at the end of a pencil
51. Stiffly
52. Stud
54. Magma
55. Evaluates
59. Indian millet
62. Entreaty
63. Type of retinal cells
65. Place
66. Cooking fat
67. A mutual promise to marry
68. French for "State"
69. Being
70. Found in a cafeteria
71. Apprentice



LAST MONTHS CROSSWORD RESULT

E	D	G	E		R	U	S	T		B	U	S	H		
T	O	R	R		E	R	N	E	S		O	R	C	A	
A	L	E	E		B	I	O	T	A		Y	E	A	R	
T	E	E	M	S		C	O	R	U	S	C	A	T	E	
		N	I	C	E		P	A	T	I	O				
M	U	S	T	A	R	D		D	E	P	T	H	S		
A	N	T	E	R	I	O	R			S	T	E	L	E	
I	B	O			S	N	I	C	K			L	I	D	
M	A	N	I	C			P	I	E	R	C	I	N	G	
	R	E	M	A	N	D		A	N	A	L	O	G	Y	
			P	R	E	E	N		O	M	I	T			
P	A	N	A	T	E	L	A	S		S	P	R	A	T	
A	L	A	S			D	E	M	O	N		P	O	R	E
L	E	G	S			S	T	E	L	A		E	P	E	E
E	S	S	E			E	D	E	N		D	E	A	N	

Sponsored by: **Welshpool Supermarket**

Entries must be received before

10th December, 2020

All correct entries will be put into a hat and the winner will be drawn by Supermarket staff. No correspondence will be entered into etc.

Please remember to double-check your spelling.

Remember to include your name, contact number and date on your returned entry, Thank you.

Winner of the October Crossword:

Lynn Gray



Community Group Listing

- ***Welshpool & District Advisory Group** – Contact: Linda Razinger 03 5688 1051
- ***Welshpool Fire Brigade** – training every Thursday night 7.30pm
- ***Welshpool Recreation Reserve** – Contact: Madelaine Mason 0409 976 211
- ***Welshpool Basketball Association** – Contact: Madelaine Mason 0409 976 211
- ***Prom Coast Soccer Club** – <http://www.promcoastsoccerclub.com.au/>
Contact: Shellie Cashmore 0419 322 384
- ***Welshpool Memorial Hall** – Contact: Alan O'Neill 5688 1419
- ***Friends of Agnes Falls** – <https://www.facebook.com/FriendsOfAgnesFalls/>
- ***Port Welshpool Fishing Club** – Contact: Vern Suckling 5688 1554
- ***Port Welshpool Working Group** – Contact: Alma Mattingley 0427 310 599
- ***Welshpool & District Playgroup** – <https://www.facebook.com/WelshpoolPlaygroup/>
- ***Welshpool & District Horticultural Society** – meeting every 2nd Wednesday of the month.
Contact: Fran Grylls Ph. 5184 1376
- ***Port Welshpool & District Maritime Museum** – Email: pwmuseum@gmail.com
Contact: Fran Grylls Ph. 5184 1376
- ***Port Welshpool Coast Guard** – Contact: Peter Carrolan 0417 372 059

Remembrance Day 11/11/2020

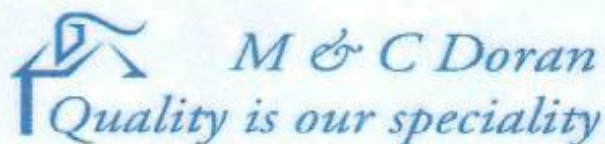
We had a small gathering at the cenotaph on Wednesday 11th November.

A short pause in our day at 11am to remember those that paid the ultimate sacrifice for our freedoms and a chance to pay our respects.

Many thanks to Barb Daff for cleaning up the garden beds.



LOCAL SERVICES.....



Michael Doran
Qualified Carpenter & Joiner

16 Turnbull Street
Port Welshpool VIC 3965
Email: buildingservices@mcdoran.com.au
Ph. 03 5688 1229
Mb. 0429 038 409
Fax. 03 5688 1377



John Hoy
Trade qualified Farrier
(25 years experience)

0447 229 390

**Lawn mowing & Maintenance, Rubish removal, Painting
Window cleaning, Gutters cleaned, High pressure washer**

Lawn mowing & Maintenance

Free Quotes reasonable rates local tradesman



Dave Mcleish
Port Welshpool

0417 538 683

davemcleish@live.com.au



Maintenance & Repairs to...

TRUCKS * TRACTORS * MACHINERY * PASSENGER & FOOD TRANSPORT VEHICLES

Ian Dubignon **M. 0448 761 642**

Styling on Stanley
Unisex Salon



Liz O'Neill
Proprietor

Wednesday, Thursday, Friday 9am – 5pm
and Saturday

46 Stanley Street,
Toora
2962.
56862328



FOR ALL YOUR TREATED PINE NEEDS

POSTS SAWN TIMBER DECKING CUSTOM TREATING
SLEEPERS NUTS AND BOLTS PALINGS AND MORE

SOUTH GIPPSLAND HIGHWAY, ALBERTON, VIC, 3971

Ph (03) 5183 2437

Fax (03) 5183 2659

Email sales@albertontimber.com.au

CONCRETER



SOUTH GIPPSLAND CONCRETE
ALL THINGS CONCRETE
ON-SITE TIMBER MILLING

0400 840 729

WWW.SGCONCRETE.COM.AU

TV & DATA SYSTEMS

Digital Antennas, TV wall mounts, Data & Computer outlets, Home Theatre, Hidden Wiring, Networks, Offices, CCTV, Repairs, Equipment Installations

Licensed Cable Installer

Domestic, Commerical & Industrial

Steve Mooney 0427 257 222

SOUTH GIPPSLAND SEPTIC TANK CLEANING

Also Portable Toilets Hire

Call Chris Whittle

(03) 5688 1572



Kirwan Builders

TK Construction

"for all your building needs"

TK Construction – Michael Kirwan

6565 South Gippsland Highway HEDLEY VIC 3967

P: 03 5184 1223 | M: 0428 911 900

E: kirwanbuilders@gmail.com

HIA MEMBERSHIP: 813 711 | DB-U: 20399 | A.B.N: 40 896 158 242

ANTHONY BRAVINGTON

Cleaning & Property Maintenance Contractor

- Commercial Cleaning, Domestic Cleaning and all types of Property Maintenance
- Accommodation Contracts
- Office Building Contracts
- Retail Shops Contracts
- School Cleaning Contracts
- Builders Cleans
- All Property Maintenance etc
- Window Cleaning
- Carpet Steam Cleaning

THURSDAYS & FRIDAYS ONLY

1 bedroom house	\$70
2 bedroom house	\$90
3 bedroom house	\$120
4 bedroom house	\$150

Call Anthony for all your cleaning needs

Mobile: 0418 146 986

Email: anthonybravington@bigpond.com



WASTE DISPOSAL

- Permanent bins & clean up skips
 - Commercial, household or farm waste
 - Cardboard recycling
 - Weekly, fortnightly, monthly
 - 1.5M3 OR 3M3 BINS
 - Locally owned & operated
- CALL OR EMAIL FOR A QUOTE

PH: 03 9794 5722

www.jjswaste.com.au

operations.melbourne@jjswaste.com.au

*"Your local name
in the waste game"*



WeighLess With Julie Ray

Weight Loss Consultant
Specialising in Healthy Eating

RED ROOF STUDIOS
125 Commercial Road
YARRAM VIC 3971

PHONE 0429832346
TO MAKE AN APPOINTMENT

Head to Health

Are you looking for
mental health support?



Go to headtohealth.gov.au to find online
and phone services and information.



Australian Government
Department of Health

Available at the Welshpool Op Shop

— FARM —
FRESH

★ EGGS ★
\$6 Dozen



Spring



W H M Z A L K R S G U B E C H T Q I
 F T U L Y I J B E P Q N O P A S D X
 S J N I B O R H L V M C S U T L E K
 P E D W G X E K J O A Z R M C Q F B
 R C Y Q U S A V N T S I E K H R O L
 O L A M B F D T E U P S W G X T J E
 U N P H Y G Z R L K D H O V C E N R
 T B E J D W P Q I S G X L M F P A U
 V M Z C A I K D H B N U F S E B R T
 D K Y T L X G O R F P E J Q B W O A
 E P G L E B S U A M O C H I C K S N
 B N A R F Y O J T H Z M T D L I P G
 G R K E N R T S N A I L Q W U S R V
 A D O N P H E M B J S T C E S N I F
 K W U F I N L T Q E R M E A Y O N D
 I B S E C K F X T D V J R H P A G Z
 N E D R A G M W K U L G S O R C L E
 H Z M T U L I P V E B A D Y W F X J



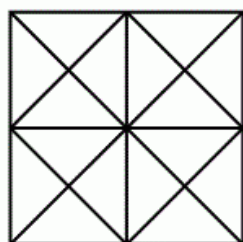
BIRDS	CALF	GARDEN	LAMB	SNAIL
BLOSSOM	CATERPILLAR	GRASS	NATURE	SPRING
BUGS	CHICKS	HATCH	NEST	SPROUT
BUNNY	FLOWERS	INSECTS	RABBIT	TULIP
BUTTERFLY	FROG	LADYBUG	ROBIN	WORM



7					5			
6		3			9		5	
9		1			8			
						6		2
8					6	7		3
			3					4
		4		5	2			6
					9			
1				6			8	

					1			4
	2	1	6					
4	9			2		6	1	
		7		4	8			
3							6	
						2	7	
	8	2		9				3
				1				
			8		5	9		

OCTOBER SOLUTION



Number of Triangles? 44

Number of Squares? 10

Addition Fubuki Puzzle

Place the numbers 1 to 9 in the 3 by 3 grid so that each horizontal and vertical line adds up to the given sum. You can use each number only once. Some numbers are already placed for you.

3			16
			22
			7
11	16	18	

			15
			12
	6		18
12	15	18	

3			13
			19
			13
16	8	21	

			15
			16
	4		14
16	11	18	

7	3	4	8	5	6	1	2	9
9	6	1	2	4	7	8	5	3
8	5	2	9	3	1	6	4	7
6	4	9	3	1	8	5	7	2
3	2	5	6	7	4	9	1	8
1	7	8	5	9	2	3	6	4
5	8	7	1	2	3	4	9	6
4	9	3	7	6	5	2	8	1
2	1	6	4	8	9	7	3	5