



June 2022

Issue Number 543

Phone/Fax: 5688 1087

14 Main Street, Welshpool, 3966

email: [rtcwelshpool@bigpond.com](mailto:rtcwelshpool@bigpond.com)

[www.welshpool.vic.au](http://www.welshpool.vic.au)

## WELSHPOOL TOWN PLANNING MEETING

Last month a public meeting was held at the Welshpool Memorial Hall inviting community members to a general discussion on how to strengthen Welshpool. As our Town Plan has expired, interested people were invited to become a part of forming the new Town planning committee. The role of this committee is to create a new Town Plan.

The response from the community was fantastic with 38 people attending and a number of those keen to become involved.

We wish to thank Barbara Look and Sophie Bolding, our Community Strengthening Officers from the South Gippsland Shire Council, for attending and sharing their knowledge and offering their support in our future endeavour.

The attendees who were interested in being part of this group have been contacted and a meeting arranged to form the committee and discuss the next steps to be taken.

Community members will be kept informed of updates through this newsletter and on the Welshpool RTC Facebook page.

There will also be another opportunity for all local community members to 'have your say' when an Open House is held presenting all ideas that have recently been provided by many community members. If anyone has other ideas this will also be the time to bring these to the attention of the group so they can be added to the future town plan.

The Welshpool and District Advisory Group (WDAG) look forward to this subcommittee being formed and taking on an important role in the future of our local district.



### Disclaimer

This newsletter is an independent self-funded publication produced by staff and volunteers of the RTC and it does not reflect the opinions of the Committee members, South Gippsland Shire, or the Department of Planning and Community Development.



TRADING HOURS  
MON - FRI  
10.00AM - 3.00PM

- WELSHPOOL COMMUNITY LIBRARY
- BENDIGO BANK AGENCY
- SERVICES AUSTRALIA AGENCY
- V/LINE TICKETING OFFICE
- ROOM HIRE AVAILABLE
- PASSPORT APPLICATIONS
- COPY & PRINT SERVICES
- BISLEY WORKWEAR

**Other services by appointment only**

- Gibson Accounting – 5176 2031



## We're closer than you think

Our Agents can help you connect with Centrelink, Medicare and other government programs and services.

Australian Government Services Australia Agents have free self service facilities. They also have staff who can help you.

At our Agents you can:

- use our computer to access my.gov.au and other government programs and services and to search for jobs
- use the telephone to access our self service options or to speak to us
- access free Wi-Fi 24/7 to connect to government services. No password required
- scan, fax and photocopy documents
- have your confirmation of identity documents certified
- lodge forms, print information and pick up brochures.

### YOUR LOCAL AGENT IS:

Welshpool Rural Transaction Centre  
14 Main Street  
Welshpool Vic 3966



Australian Government  
Services Australia

servicesaustralia.gov.au



## VLIN BUS SERVICES

**Purchase tickets at the  
Rural Transaction Centre or  
collect a VLINE Bus Timetable**



**The \$250 Power Saving Bonus program  
has been extended to 30 June 2022 to  
support more eligible Victorian  
households with their energy bills**

**Visit [compare.energy.vic.gov.au](https://compare.energy.vic.gov.au)  
to see the eligibility requirements**



Gibson Accounting

Kieran Olree

PH: (03) 5176 2031

Fax: (03) 5174 6313

101 Hotham Street  
Traralgon, Vic 3844

Email: [kieran@gibsonaccounting.com.au](mailto:kieran@gibsonaccounting.com.au)

Kieran Olree is at the RTC every Wednesday

By appointment only - **(03) 5176 2031**

For more information and all the latest tax  
updates and handy hints for tax time,  
please visit Gibson's website:

**[www.gibsonaccounting.com.au](https://www.gibsonaccounting.com.au)**

# WELSHPOOL KINDERGARTEN



The Welshpool & District Advisory Group have donated \$934.95 for the purchase of a sensory nook space for the children of Welshpool Kindergarten. The sensory space offers children a quiet space away from a busy room and also provides a space for reflection, reading, exploration and creativity.



# PORT WELSHPOOL & DISTRICT BOWLING CLUB



The Welshpool & District Advisory are pleased to be able to donate \$600 to the Port Welshpool & District Bowling Club for a replacement deck on their mower. Pictured is Club President Errol Gregory receiving the cheque from Op Shop manager Di Casey





**Women's Flx & Move Jeggings in store now. New season hoodies and rain jackets also available. Call in to view the full range. 14 Main St Welshpool 5688 1087**

## Myli - My Community Library



Are you a member of Myli – My Community Library? (formally known as the West Gippsland Libraries). Join today at the Rural Transaction Centre and have access to a variety of books, audio books, DVD's and more. If it's not on the shelf it can be ordered in. Open Monday to Friday 10am to 3pm. A Librarian also attends every Wednesday 12noon to 2pm for any assistance required.

**One kind word  
can warm three  
winter months.**

- Japanese Proverb

**Bendigo Bank**

**The Welshpool Agency hours remain as**

**Monday to Friday 10am to 3pm**

**Please note our new phone number**

**5688 1087**



## RTC Room for Hire

Office Hire : \$11 per hour

\$33 per day

INFORMATION FOR CUSTOMERS

## Australian Government Mobile Service Centre



Serving Regional Australia

Visit the Mobile Service Centre to find out about Australian Government payments and services for rural families, older Australians, students, job seekers, people with disability, carers, farmers and self-employed people.

Information about Department of Veterans' Affairs programs and support services for veterans and their families will also be available.

Staff can provide you with information and support. They can also help you create a myGov account. myGov is a simple and secure way to access government services online.

**Thursday, 14 July 2022**

9:00 am to 2:30 pm

Near the Park Rotunda, Main Street

WELSHPOOL

For more information, go to [servicesaustralia.gov.au/mobileoffice](https://servicesaustralia.gov.au/mobileoffice)



Services  
Australia

[servicesaustralia.gov.au/mobileoffice](https://servicesaustralia.gov.au/mobileoffice)

## Welshpool Op Shop & Nursery

Welshpool Op Shop & Nursery  
Monday to Friday  
10am – 4pm  
Saturday 10am – 2pm  
PH: 0474 591 014



# Australia's Biggest Morning Tea

Every dollar raised helps support  
those impacted by cancer.

When: TUESDAY 12<sup>TH</sup> JULY

Where: Welshpool Op Shop

Time: 10am Cost: \$10

Details: Come along and enjoy some beautiful  
home cooked food, great company,  
have some fun and help raise money  
for cancer

[biggestmorningtea.com.au](http://biggestmorningtea.com.au)



# Welshpool Recreation Reserve

## Seafood night

After a two year break it was wonderful to be able to bring back our annual Seafood Feast. It was great to see you all, many returning customers as well as a large number of newcomers. A huge thank you to the members of the Port Welshpool Fishing Club for running the kitchen for the night, and also a few of the Basketball members for helping out. Thank you to Peter Stoitse Transport for delivering the seafood and to Bruce Collis for supplying the ice. It was fantastic to be able to run this event again and we hope all those who attended enjoyed the evening. Running such events at the Recreation Reserve are an important part of our fundraising. All funds made on the night go towards the ongoing upkeep and improvements of the reserve. Thank you all for your support and we look forward to seeing you again next year.



## New Split System Units

On behalf of the community the Welshpool Recreation Reserve committee would like to thank the Local Bendigo Bank Branches for their incredibly generous donation through the Community Bank Grants program. With the funds received we have had two new split system units installed in the main meals area of the Recreation Reserve. These will be of great benefit to the clubs that currently call the reserve 'home' and also to the general community when other events are held at the facility. THANK YOU



Supporting your community  
Community Bank  
Toora, Foster and Welshpool

 **Bendigo Bank**

## TABLE TENNIS AT WELSHPOOL MEMORIAL HALL

Are you interested in joining a friendly group of enthusiastic players for a social hit of Table Tennis? All levels welcome!

Please ring Jing Johns on 0400 114 905 for more information or call in to the RTC and leave your details



The Welshpool & District Advisory Group have kindly donated a new Table tennis table

## Catch of the Day!

On Sunday 22<sup>nd</sup> May at 8.30am while fishing 186km east of Port Welshpool, skipper of the Everest Horizon Paul Williams and crew Tim Beveridge and Kim Barned, hooked a 165kg broadbill swordfish. The fight continued for 3 hours, including the fish jumping clear out of the water four times, until it was successfully landed.

Everest Horizon is a 9.15mtr diesel powered Kevlar cat owned and operated by Paul.

Paul fished off the continental shelf for the sword fish.

This is the first landing of a broadbill swordfish from Port Welshpool.



# Welshpool Basketball Association

The year is quickly passing by and it's almost time to start thinking basketball! Our next all ages season will begin early September and run through to Mid December.

Minis and Juniors is held on a Wednesday night, and Intermediates and Seniors on Thursday nights.

Keep your eye out in next month's newsletter and on our Facebook page for more details.

Please note more helpers and/or committee members will be needed for this upcoming season. If you would like to know how you can help please contact Madelaine on 0409 976 211 or email us at [welshpoolbasketballassociation@hotmail.com](mailto:welshpoolbasketballassociation@hotmail.com)

We look forward to seeing you all again soon.

## Port Welshpool Fishing Club

On Saturday 11<sup>th</sup> June the Port Welshpool Fishing Club held the 2021-22 season Presentation Night. Numbers attending were fantastic and everyone was treated to a beautiful three course meal.

Trophies were presented to those members who took top spot on the leader board. This year saw the largest group of juniors fishing that we have had for many years which is wonderful to see. It's great to see the excitement on the kids' faces when receiving their trophies. Those juniors who didn't weigh in any fish received a medallion for their efforts.

The adult competition saw many fish weighed in this year with a number of competitors taking trophies home with them.

Long term member Kristen was presented with a Life Membership and thanked for her continued help within the club.

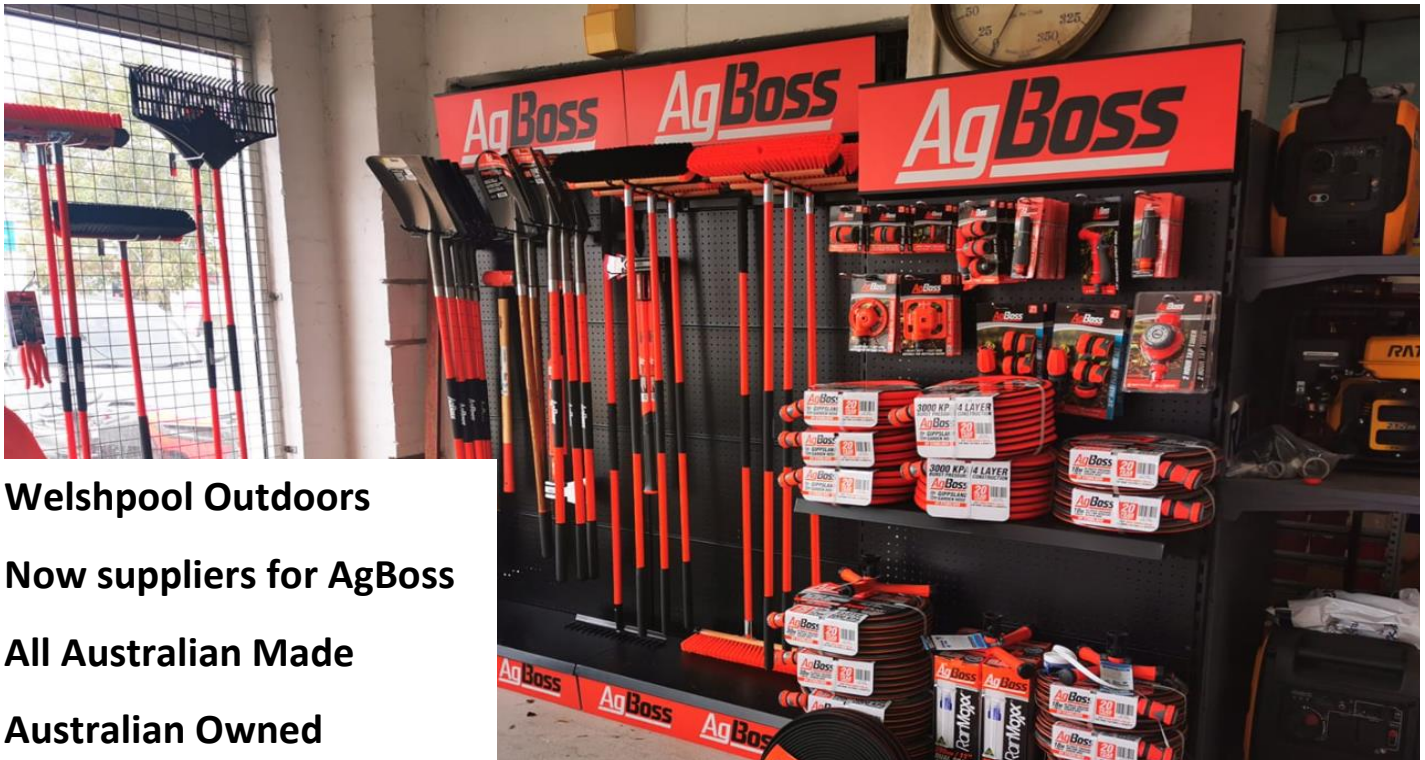
The new fishing season has already started so be sure to weigh your fish in. The next get together will be November 26<sup>th</sup>, stay tuned for more information.



**E.W. & H.P. FOWLER  
WELSHPOOL OUTDOORS  
& ORIGIN GAS SUPPLIES**

**19 MAIN STREET  
WELSHPOOL VIC 3966  
PH: 0356881304**

**EMAIL: [welshpooloutdoors@bigpond.com](mailto:welshpooloutdoors@bigpond.com)**



**Welshpool Outdoors  
Now suppliers for AgBoss  
All Australian Made  
Australian Owned**



**WELSHPOOL POST OFFICE**

**20 Main Street Welshpool Phone: 5688 1419**

**Email: [welshpoolpostal@bigpond.com](mailto:welshpoolpostal@bigpond.com)**

**NEW UNLOCKED SAMSUNG HANDSETS NOW AVAILABLE.**



- 6.6" Infinity-V Display
- 128GB & Micro SD up to 1TB
- 5,000mAh Battery
- 50+2+5+2MP Rear Cameras
- 8MP Front Camera

**UNLOCKED SAMSUNG GALAXY A13**

**\$299.00**

- 6.6" Infinity-V Display
- 128GB & Micro SD up to 1TB
- 5,000mAh Battery
- 50+2+5+2MP Rear Cameras
- 8MP Front Camera

**Unlocked Samsung Galaxy A23 Black**  
Unlocked Samsung Galaxy A23 Black

**\$399.00**



**Samsung Galaxy A13 128GB 4G**

**Samsung Galaxy A23 128GB 4G**

**PRICES VAILD TIL 30/06/2022**

# Port Welshpool and District Maritime Museum

FROM THE ARCHIVE:      Reported in the Hobart Mercury, September 1<sup>st</sup> 1931.  
   “INJURED MAN STRANDED”.

Left on Flinders Island, ketch sails without him.

Unusual circumstances surrounds the report that Eric Jackson, a member of the crew of the Victorian fishing ketch “Ruby”, was taken ashore unconscious some days ago to the hotel at Flinders Island by his mates, who have since sailed away. The man has been taken to Scottsdale Hospital after lying unconscious for about a week. It is stated that Jackson was accidentally struck by a winch handle. This report was telephoned from Bridport yesterday to the Metropolitan Superintendent of Police [Mr. W.G. Oakes] by the bailiff [Senior- Constable Challenger], who was in the vicinity with the Sea Fisheries patrol boat “Allara”, and took the injured man to Bridport.

Senior-Constable Challenger stated that when he was at Flinders Island, Jackson had been brought to the hotel by the other members of the crew of the ketch, about a week previously. Jackson was unconscious, and had remained so until Saturday last. With the assistance of Sister Clusky, Senior-Constable Challenger took the man to Bridport. On the voyage across the man regained consciousness temporarily. On the arrival at Bridport he was taken to Scottsdale Hospital by Sister Clusky. The ketch “Ruby” remained about a week under Green Island and then left, but no member of the vessel, it is stated, went to the hotel to see how Jackson was progressing. Probably the ketch has returned to Victoria.

Having completed his work in the district, Senior-Constable Challenger expects to reach Hobart at the end of the week. He has met very severe weather, but his party is well.

The ketch “Ruby” is licensed to take crayfish in Tasmanian waters for the Victorian Market. She is owned by Mr. C. Anderson of Port Welshpool, Victoria.

---

## UPDATE:

Just to give you an update on the Museum.

The doors are still closed and will be for some time yet as there is still a lot of work to be done but all is coming along nicely. We have our occupancy certificate now the building side is complete but there is still a way to go.

With floor boards replaced, Paint & More, Welshpool, are ready to freshen up the rooms, which is very welcome as she hasn't seen a coat of paint on the inside since she first opened as a Museum. All this work is under the guide of Heritage Victoria, so as to keep the old world charm. There is still a long way to go before we open the doors to the public, but when we do all will be revealed.

So watch this space.

## HEDLEY MILL information day;

Thanks to all who attended the Ferry Terminal for the very interesting talk Mike McCarthy gave on the history of the Hedley Mill and surrounding areas.

A yum afternoon tea followed and two lucky winners of the raffle left very happy.

## NEXT: “SHARING HISTORY DAY”:

We plan to hold a history sharing day 31<sup>st</sup> August at the Ferry Terminal. Cheryl Glowrey will be there on the day to help. The idea is so history can be recorded as you remember it. Bring along photos of interest that you care to share as we will have a copier there. Have a cuppa and catch up with history and old friends. New to the town and want to know the history of your house, or the area, come along we would love to help.



"You make a life  
out of what you  
have, not what  
you're missing."

—KATE MORTON,  
THE FORGOTTEN GARDEN

RS

## Danny O'BRIEN MP

Member for Gippsland South

54B Cunninghame St, Sale VIC 3853  
03 5144 1987  
danny.obrien@parliament.vic.gov.au  
www.dannyobrienmp.com.au

*Working for Gippsland South*

f t i /dannyobrienmp

**THE NATIONALS** for Regional Victoria



## FOSTER SEAFOODS



35 Main Street, Foster

Ph: (03) 5682 2815

With catches of Inlet fish arriving within the shop on a daily basis and our vessels returning from extended trips into Bass Strait, you can be assured that the quality is second to none.

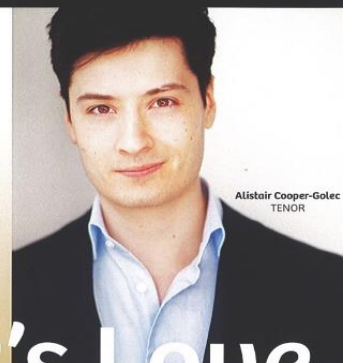
We also have an extensive list of products with very competitive prices.

PROM RECITALS PRESENTS

**Art Songs**  
OF ROBERT SCHUMANN  
AND BENJAMIN BRITTEN

FEATURING  
**ALASTAIR COOPER-GOLEC**  
TENOR

ACCOMPANIED BY  
**ALEX BYRNE**  
PIANO



Alastair Cooper-Golec  
TENOR

## A Poet's Love



Alex Byrne  
PIANO

FISH CREEK MEMORIAL HALL  
SATURDAY 9 JULY  
DOORS OPEN AT 7PM  
CONCERT STARTS AT 7.30PM  
TICKETS \$55  
GO TO TRYBOOKING.COM/BZJUI

CREATIVE VICTORIA

REGIONAL ARTS VICTORIA

Supported by Creative Victoria and Regional Arts Victoria.



To book please scan

This performance will be presented under any public health restrictions and COVIDSafe settings applicable on the day.

PROM  
RECITALS

promrecitals.org.au

Celebrating Classical Music



**Bar & Bottle Shop Open Every Day from Midday**

**Accommodation Available**

**Bistro is temporarily closed**

**Stay tuned for more information**

Main Street Welshpool, Vic 3966

Contact: **Ph: (03) 56881309**

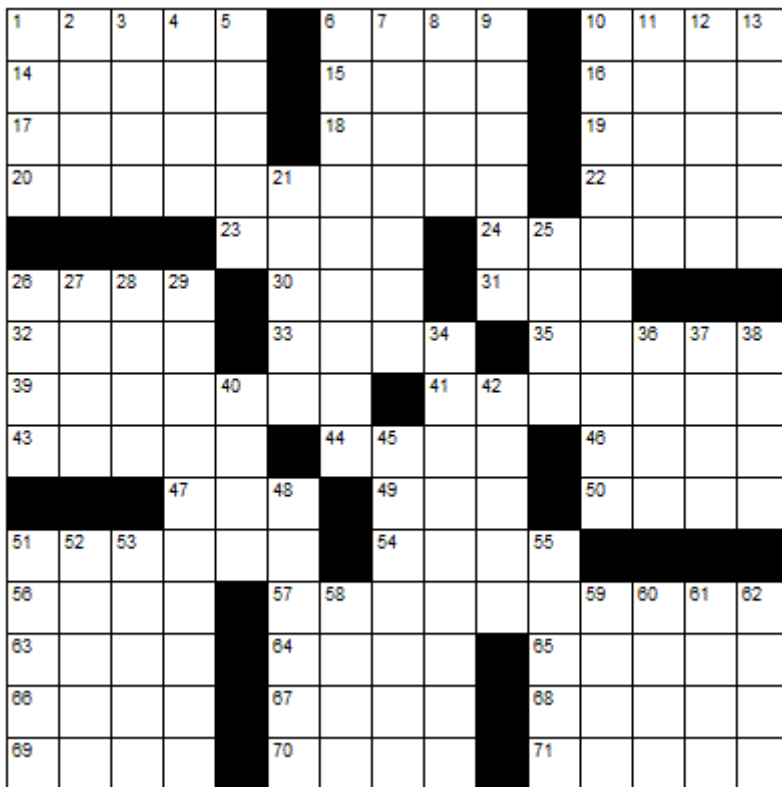
## BUTTERFLY PASSENGER SERVICE

Butterfly Passenger Service is available to all South Gippsland residents who have to travel to shops or to attend medical appointments during COVID 19 restrictions.

If you don't have your own transport and need to be somewhere please call Kerry on 0411 334 236 to discuss your travel requirements and get a quote.



# CROSSWORD



## Down

1. Complain
2. Hindu princess
3. Rewrite
4. Where the sun rises
5. Pimp
6. Military specialist
7. Back up
8. Mid-month days
9. Throat part
10. Highland native
11. Skylit lobbies
12. Gain knowledge
13. Implant
21. Domain
25. Burn the surface of
26. Bawdy
27. Margarine
28. Telephone
29. Not yet finished
34. Cuts down trees
36. Whale
37. Wharf
38. Type of sword
40. By mouth
42. Loft
45. Vivid
48. Begin again
51. Pantywaist
52. Farewell
53. Honorable
55. Stage
58. Beseech
59. Allows
60. Ages
61. Location
62. Notices

## Across

1. Move furtively
6. Sand
10. Healthy
14. Radiolocation
15. Overhaul
16. Any thing
17. Licoricelike flavor
18. Not odd
19. Seize suddenly
20. Acrimony
22. Employ
23. Close
24. Land surrounded by water
26. Hubs
30. Commercials
31. Grassland
32. Distinctive flair
33. Told an untruth
35. Battery terminal
39. Accept gladly
41. Pendant jewelry item
43. Sorrow
44. Fissure
46. Behold, in old Rome
47. Blemish
49. Excluding
50. Garden tool
51. A small portion
54. Voyage
56. False god
57. Too shocked for words
63. Your majesty
64. Coffee dispensers
65. Eagle's home
66. Chair
67. Sail holder
68. Condition
69. Christmas season
70. Visual organs
71. S S S



*Winning entry will receive a free coffee and cake from the Welshpool Café & Supermarket*



## LAST MONTHS CROSSWORD RESULT



Sponsored by: **Welshpool Supermarket**

Entries must be received before

15<sup>th</sup> July, 2022

All correct entries will be put into a hat and the winner will be drawn by Supermarket staff. No correspondence will be entered into etc.

Please remember to double-check your spelling.

Remember to include your name, contact number and date on your returned entry, Thank you.

**Winner of the April Crossword:**

Arie Bos



## Community Group Listing

- \***Welshpool & District Advisory Group** – Contact: Linda Razinger 03 5688 1051
- \***Welshpool Fire Brigade** – training every Thursday night 7.30pm
- \***Welshpool Recreation Reserve** – Contact: Madelaine Mason 0409 976 211
- \***Welshpool Basketball Association** – Contact: Madelaine Mason 0409 976 211
- \***Prom Coast Soccer Club** – <http://www.promcoastsoccerclub.com.au/>  
Contact: Shellie Cashmore 0419 322 384
- \***Welshpool Memorial Hall** – Contact: Alan O'Neill 5688 1419
- \***Friends of Agnes Falls** – <https://www.facebook.com/FriendsOfAgnesFalls/>
- \***Port Welshpool Fishing Club** – Contact: Jenny Horner 0428 862 028
- \***Port Welshpool Working Group** – Contact: Alma Mattingley 0427 310 599
- \***Welshpool & District Playgroup** – <https://www.facebook.com/WelshpoolPlaygroup/>
- \***Welshpool & District Horticultural Society** – meeting every 2<sup>nd</sup> Wednesday of the month.  
Contact: Tom Reakes Ph. 0429966002
- \***Port Welshpool & District Maritime Museum** – Email: [pwmuseum@gmail.com](mailto:pwmuseum@gmail.com)
- \***Port Welshpool Coast Guard** – Contact: Peter Carrolan 0417 372 059



Port Welshpool Working  
Group Market

**Sunday 26<sup>th</sup> June**

9am – 2pm

Old Ferry Terminal  
Port Welshpool

(Stall enquiries to Alma.....0427310599)



Three-year-old and four-year-old kindergarten registration for 2023 is now open.

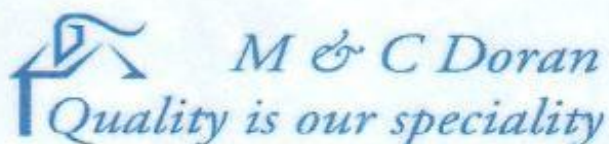
Kindergarten registration is centralised through Council. Simply complete the form and nominate your kindergarten preferences. Registrations must be lodged by 30 June to receive a first-round offer.

For more information, please phone 5662 9200 or text your contact details to 0447 965 850 and we will call you back.

To register go to:

<https://www.southgippsland.vic.gov.au/central-enrolment>

## LOCAL SERVICES.....



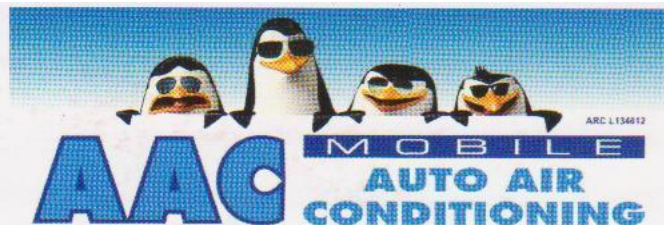
**Michael Doran**  
Qualified Carpenter & Joiner

16 Turnbull Street  
Port Welshpool VIC 3965  
Email: [buildingservices@mcldoran.com.au](mailto:buildingservices@mcldoran.com.au)  
Ph. 03 5688 1229  
Mb. 0429 038 409  
Fax. 03 5688 1377



**John Hoy**  
Trade qualified Farrier  
(25 years experience)

0447 229 390



*Maintenance & Repairs to...*  
**TRUCKS \* TRACTORS \* MACHINERY \* PASSENGER & FOOD TRANSPORT VEHICLES**  
Ian Dubignon **M. 0448 761 642**

**DIGITAL - TV - ANTENNAS**  
TV & PHONE POINTS TV & VCR TUNING

HOME THEATRE ALARM INTERCOM INSTALLATIONS

**ANDY**  
PH: 0412 445 554

COMMERCIAL UPGRADES  
DIGITAL INSTALLATION  
SPECIALIST

ABN 69 653 510 722  
ACA REG B18282VIC

### How can we help?

For information and assistance:

- 9 Smith Street, Leongatha VIC 3953
- 5662 9200
- [council@southgippsland.vic.gov.au](mailto:council@southgippsland.vic.gov.au)
- [www.southgippsland.vic.gov.au](http://www.southgippsland.vic.gov.au)
- Facebook: [southgippslandshirecouncil](https://www.facebook.com/southgippslandshirecouncil)



**Snap  
Send  
Solve**

Did you know that  
you can report  
something that  
needs fixing via  
Snap, Send, Solve?

Simply download  
the app from the App  
Store or Google Play  
and start reporting



FOR ALL YOUR TREATED PINE NEEDS

POSTS SAWN TIMBER DECKING CUSTOM TREATING  
SLEEPERS NUTS AND BOLTS PALINGS AND MORE

SOUTH GIPPSLAND HIGHWAY, ALBERTON, VIC, 3971  
Ph (03) 5183 2437 Fax (03) 5183 2659 Email [sales@albertontimber.com.au](mailto:sales@albertontimber.com.au)

# CONCRETER



**0400 840 729**

**WWW.SGCONCRETE.COM.AU**

## TV & DATA SYSTEMS

Digital Antennas, TV wall mounts, Data & Computer outlets, Home Theatre, Hidden Wiring, Networks, Offices, CCTV, Repairs, Equipment Installations

**Licensed Cable Installer**

Domestic, Commercial & Industrial

**Steve Mooney 0427 257 222**

## SOUTH GIPPSLAND SEPTIC TANK CLEANING

Also Portable Toilets Hire

Call Chris Whittle

**(03) 5688 1572**



Kirwan Builders

# TK Construction

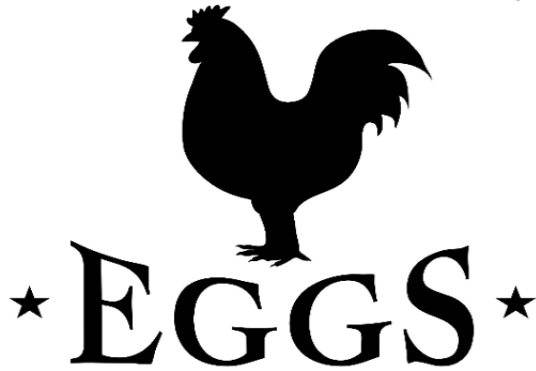
*"for all your building needs"*

TK Construction - Michael Kirwan  
6565 South Gippsland Highway HEDLEY VIC 3967  
P: 03 5184 1223 | M: 0428 911 900  
E: [kirwanbuilders@gmail.com](mailto:kirwanbuilders@gmail.com)

HIA MEMBERSHIP: 813 711 | DB-U: 20399 | A.B.N: 40 896 158 242

Available at the Welshpool Op Shop

FARM  
**FRESH**



**\$6 Dozen**

**Is your block a fire Hazard**

**On Shore  
Property Maintenance**

**We Offer**

Removal of Rubbish  
Tree Trimming  
Gutters Cleaned  
Pressure Washing  
Solar Panels Cleaned  
General Maintenance  
Fencing  
Excavator Hire

**0455 997 752**

**0432 529 721**

**On Shore Property  
Maintenance**



Foster Golf Club  
7 Reserve Street  
Foster Victoria  
3960

19  
Chantelle Peters (03)5682 2272  
golfclub19@outlook.com.au



**ANTHONY BRAVINGTON**

**Cleaning & Property Maintenance Contractor**

- Commercial Cleaning, Domestic Cleaning and all types of Property Maintenance
- Accommodation Contracts
- Office Building Contracts
- Retail Shops Contracts
- School Cleaning Contracts
- Builders Cleans
- All Property Maintenance etc
- Window Cleaning
- Carpet Steam Cleaning

**THURSDAYS & FRIDAYS ONLY**

|                 |       |
|-----------------|-------|
| 1 bedroom house | \$70  |
| 2 bedroom house | \$90  |
| 3 bedroom house | \$120 |
| 4 bedroom house | \$150 |

Call Anthony for all your cleaning needs

**Mobile: 0418 146 986**

**Email: anthonybravington@bigpond.com**



**TAKE EXTRA CARE  
DURING SCHOOL TIMES**





R L S E N Y B F Q S A H  
X E R K C M O P D N J I  
S C T V A O S K I O G T  
W E D N K T A H Z W L O  
O C C X I F I T P M A Z  
L O J I R W T N Y A B S  
E L W E P I L S G N T S  
B D E V C F M R E O L E  
N Z S E T A K S O E G T  
E T U D K P S B D Y N I  
R S N O W B A L L C U H  
F I L S A R U N Y I B W

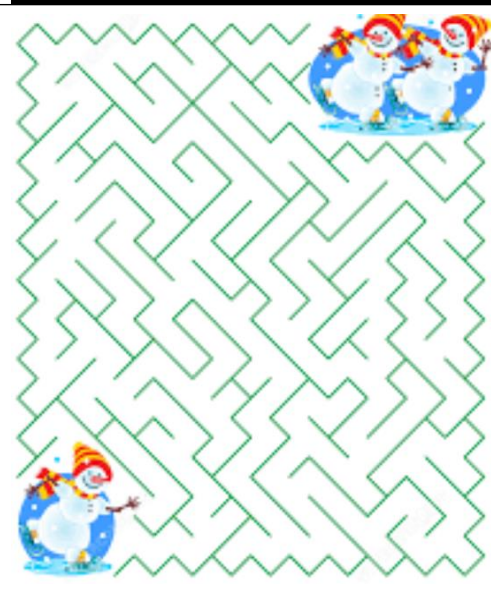


BELOW  
BOOTS  
COAT  
COLD  
FREEZE  
ICE  
ICY  
SKATES

SKATING  
SKI  
SLED  
SLIP  
SNOWBALL  
SNOWMAN  
WHITE  
WINTER



|   |   |   |   |   |   |   |   |   |
|---|---|---|---|---|---|---|---|---|
|   |   | 2 |   |   |   |   |   | 6 |
|   | 7 |   |   | 1 |   | 8 |   | 3 |
|   |   |   |   |   |   |   | 8 | 7 |
|   |   | 1 | 2 |   | 4 | 3 |   |   |
|   |   |   |   |   | 3 |   | 9 |   |
|   | 2 | 4 |   |   | 9 |   |   |   |
|   | 4 |   |   |   |   | 5 |   | 8 |
|   |   | 3 | 6 |   |   |   |   |   |
| 2 | 8 | 5 |   |   |   |   |   |   |



What do you call a dog  
in the winter?  
A chili dog!



*Spelling Boggle*

|   |   |   |
|---|---|---|
| c | t | a |
| u | l | y |
| a | l | d |

How many words can you make  
with these letters?

*Spelling Boggle*

|   |   |   |
|---|---|---|
| s | r | t |
| w | e | n |
| o | a | r |

How many words can you make  
with these letters?

April Solution

|   |   |   |   |   |   |   |   |   |
|---|---|---|---|---|---|---|---|---|
| 9 | 3 | 4 | 6 | 8 | 7 | 5 | 2 | 1 |
| 5 | 7 | 2 | 9 | 1 | 4 | 3 | 8 | 6 |
| 8 | 1 | 6 | 2 | 5 | 3 | 7 | 4 | 9 |
| 4 | 9 | 7 | 8 | 6 | 5 | 2 | 1 | 3 |
| 6 | 8 | 3 | 1 | 7 | 2 | 9 | 5 | 4 |
| 1 | 2 | 5 | 3 | 4 | 9 | 6 | 7 | 8 |
| 2 | 5 | 8 | 4 | 9 | 6 | 1 | 3 | 7 |
| 7 | 6 | 1 | 5 | 3 | 8 | 4 | 9 | 2 |
| 3 | 4 | 9 | 7 | 2 | 1 | 8 | 6 | 5 |