

SeaDays 2022

The recent SeaDays Festival held at Port Welshpool had to overcome Covid and foul weather in the lead up to the event. This was reflected in a smaller than usual number of visitors.

Those that did attend were all very impressed with the variety of activities for everyone.

The ever popular "Come Try Fishing" saw some children at each session catch their first fish. Thanks to Recreational Fishing Victoria for their continued support.

We welcomed Birdlife Australia and the West Gippsland Library Service for the first time, (and hopefully not the last) along with the Welshpool Horticultural Society, and all were popular with our visitors with a variety of activities.

The Star of the South offshore windfarm project updated visitors on this huge project to be installed off Woodside Beach.

The Port Welshpool Working Group would like to thank Star of the South for their generous support for this year's Festival.

The Port Welshpool Coast Guard and Friends of Agnes Falls rounded out the attractions for this year.

Music was supplied by Cladene-Maree and her student Gabby on the violin, a change from previous years, but very well received.

While Covid meant that Coast Care and Parks Victoria could only have a very limited presence for the Festival, they were still heavily involved in the planning process.

The Port Welshpool Working Group would like to thank ALL volunteers and contributors to this year's festival and look forward to next year's festival to be held on January 7th and 8th 2023.

Hopefully the Covid situation will be such that a much larger event can be delivered.



Disclaimer

This newsletter is an independent self-funded publication produced by staff and volunteers of the RTC and it does not reflect the opinions of the Committee members, South Gippsland Shire, or the Department of Planning and Community Development.



TRADING HOURS
MON - FRI
10.00AM - 3.00PM

- WELSHPOOL COMMUNITY LIBRARY
- BENDIGO BANK AGENCY
- SERVICES AUSTRALIA AGENCY
- V/LINE TICKETING OFFICE
- ROOM HIRE AVAILABLE
- PASSPORT APPLICATIONS
- COPY & PRINT SERVICES
- BISLEY WORKWEAR

Other services by appointment only

- Gibson Accounting – 5176 2031



We're closer than you think

Our Agents can help you connect with Centrelink, Medicare and other government programs and services.

Australian Government Services Australia Agents have free self service facilities. They also have staff who can help you.

At our Agents you can:

- use our computer to access my.gov.au and other government programs and services and to search for jobs
- use the telephone to access our self service options or to speak to us
- access free Wi-Fi 24/7 to connect to government services. No password required
- scan, fax and photocopy documents
- have your confirmation of identity documents certified
- lodge forms, print information and pick up brochures.

YOUR LOCAL AGENT IS:

Welshpool Rural Transaction Centre
14 Main Street
Welshpool Vic 3966



Australian Government
Services Australia

servicesaustralia.gov.au



VLIN BUS SERVICES

**Purchase tickets at the
Rural Transaction Centre or
collect a VLINE Bus Timetable**



**The \$250 Power Saving Bonus program
has been extended to 30 June 2022 to
support more eligible Victorian
households with their energy bills**

**Visit compare.energy.vic.gov.au
to see the eligibility requirements**



Gibson Accounting

Kieran Olree

PH: (03) 5176 2031

Fax: (03) 5174 6313

101 Hotham Street
Traralgon, Vic 3844

Email: kieran@gibsonaccounting.com.au

Kieran Olree is at the RTC every Wednesday

By appointment only - **(03) 5176 2031**

For more information and all the latest tax
updates and handy hints for tax time,
please visit Gibson's website:

www.gibsonaccounting.com.au

Prostate Cancer Charity Drive

The Great Southern Rail Trail was buzzing with activity over the Australia Day long weekend when members from the Eastern Vic Pleasure Harness Club and the Southern Cross Harness Club organised a fundraiser for Prostate Cancer.

Their trip took them from Leongatha to Welshpool, finishing up at the Welshpool Recreation Reserve.

Members faced a number of challenges along the way including the unpredictable weather.

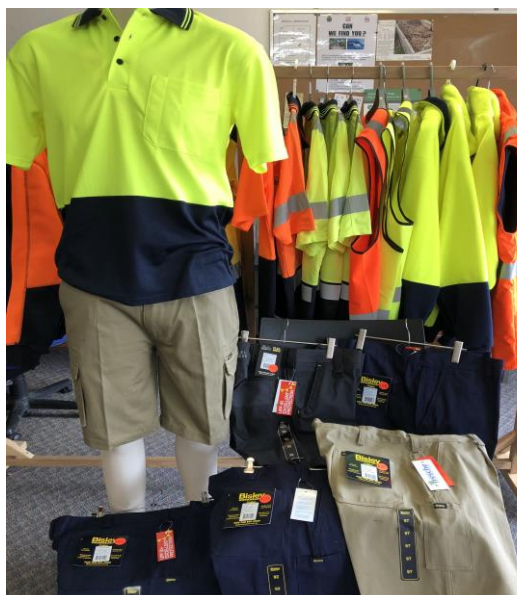
Congratulations to the Clubs for organising such a wonderful fundraiser and enjoying our beautiful Rail Trail. We look forward to seeing you all again.



Welshpool & District Primary School

Great to see so many smiling faces as we have a fantastic start to 2022!





**Workwear and Hi Vis Clothing
In Stock & available to order
Call in to the Welshpool RTC
or phone 56881051**



RTC Room for Hire

Office Hire : \$11 per hour
\$33 per day



**The Welshpool Agency hours remain as
Monday to Friday 10am to 3pm**

Welshpool Op Shop & Nursery
Monday to Friday
10am – 4pm
Saturday 10am – 2pm
PH: 0474 591 014



**Welshpool Op Shop - Grab a bargain!
Fill a basket of clothing for \$5**



Welshpool & District Advisory Group

Grant Offer

The Welshpool and District Advisory Group who manage the Welshpool Rural Transaction Centre and the Welshpool Op Shop understands the impact of Covid-19 on our district and families, in accordance with the Groups mandate we are able to offer support.

We are in a fortunate position to invite not-for-profit organisations and clubs to submit an application for a small grant to assist in the purchase of much needed equipment. Written applications can be submitted in person or by email. The application letter requires details about the group/organisation and what the request is for.

Please email us on rtcwelshpool@bigpond.com or call in to 14 Main St. Welshpool.



Port Welshpool Fishing Club

Now that the silly season has come to an end its time to get those rods out of mothballs and catch some fish. There have been some nice fish weighed in over the holiday season and we look forward to many more being weighed in.



We have had a lot of juniors getting involved and weighing in some nice sized fish, even putting some of us older people to shame. It's great to have a few new families joining the club and having the younger ones involved in a great outdoor activity. It's also wonderful to see the kids enjoying themselves out on the oval at club functions as well.

Remember every fish that you weigh in is a potential winner in the secret weight prize, the more fish you weigh in the more chances you get so let's get our weigh master Ron Hunt busy, send him those pictures and weights regularly.

Our next function is on next **Saturday 19th February** at Welshpool Recreation Reserve so be there or be square 6:30 start byo. Covid rules will apply.

Police and Fisheries have been out in force lately checking boats for safety gear and such a few infringements have been issued, especially to those that haven't been wearing a life jacket while launching and retrieving so make sure all your gear is up to date and checked.



I have not been putting any weights in the newsletter as we are trying to encourage you to weigh in instead of thinking your fish is not big enough. The leader board will be at the club when you come on the weekend. Remember every fish counts, we have heaviest mixed bag trophy that anyone can win young or old just weigh in those fish.

Tight lines and stay safe on the water and land.

E-MAIL PWFC2021@outlook.com

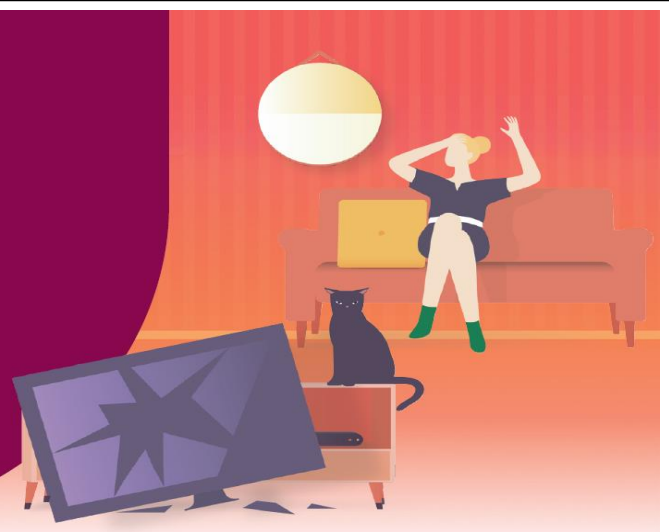
Home & contents insurance

The unexpected happens.

With Bendigo Bank, you'll have home and contents insurance to rely on.

To protect what matters to you, search Bendigo Bank Insurance.

 Welshpool Agency 5688 1051



Bendigo and Adelaide Bank ABN 11 068 049 178 AFSL 237879 acts under its own Australian Financial Services Licence number and under an agreement with a range of insurers. See target market determination: [bendigobank.com.au/TMD](https://www.bendigobank.com.au/TMD). A1404742 OUT_3859148, 07/10/2021



Port Welshpool Working Group
Market

Sunday 27th February

9am – 2pm

Old Ferry Terminal
Port Welshpool

Covid rules apply

(Stall enquiries to Alma.....0427310599)

Welshpool & District Horticultural Society

Autumn Flower Show

“The Joy of Gardening”

Friday 11th March

Saturday 12th March

Welshpool Memorial Hall

Public Choice theme

“Always look on the bright side”

Schedules available from the RTC or

Fran Grylls 5184 1376



Friends of Toora Heritage Pear Orchard, inc.

NO PEAR PARTY for 2022.

We are sorry that we will not be holding the Pear Party

This year 2022. This is due to COVID 19 restrictions.

We will be open on March 13th for Pear Sales. 11-3pm.

Pears will be ready to pick from Mid March.

We have an HONESTY system.

Pick your own Pears- Bags supplied \$6.

\$\$\$Money into the RED box.

Thank You all for your support.

Come & see the Fairy Tree & Food Forest Garden.

Further information. Ph Meryl. 0428864520..56816335.

Toora & Dist Family History Group inc.

Meet in the Research room, Toora Hall.

Will be reopening on Monday. Feb 7th . 1-4 pm.

**If you are interested in researching your family History,
or becoming a member, give us a call.**

We are currently researching these families.

if you can help with any information please let us know.

BOZINIS lived in Creamery Valley Rd, Toora Nth. Farmer. 1940s.

COLE Margaret Ann. teacher. Hedley. Passed away 2019.

Call in & see us any Monday afternoon. Have a cuppa & chat.

Membership . \$15. Research \$25.

More info. F/b or Ph Mary 56 821166. Meryl 0428864520.

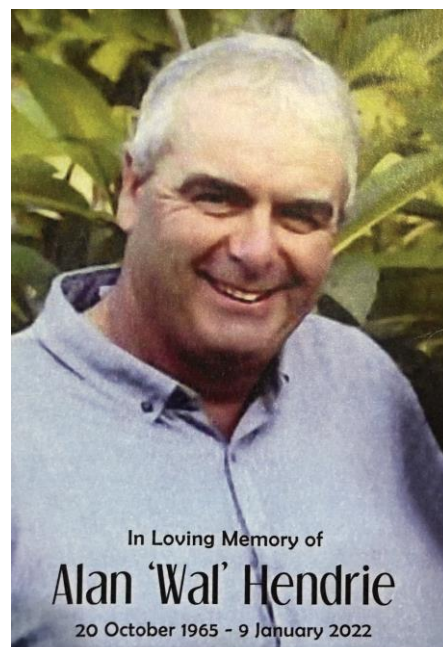


Alan (Wal) Hendrie

Alan (Wal) Hendrie grew up in Welshpool on the family farm. He attended the Welshpool Primary School, Foster High School and Leongatha trade school. Wal completed his farm apprenticeship on his uncles Max and Barry's neighbouring property.

He later ran his own dairy farm in Welshpool and was the first in the area to milk once a day so he could be sure to attend as many of his children's sporting and school events. He worked hard but worked harder for his family.

Wal was a devoted family man who never took life too seriously but earned peoples respect wherever he went. He was very community minded, and whilst in Welshpool was President of the school council, a dedicated member and later Captain of the CFA, and also looked after the Welshpool Cemetery Trust. Wal would always get the job done. He had a knack for making everyone feel like they really mattered and always had a cheeky grin.



Once Wal moved to Noosa in 2013 with Joanne and his girls, he continued to make a huge impact on many people's lives. With the passing of Joanne in 2016 and Ella just a year later, Wals lightness in the face of unimaginable sadness was inspirational. He always had a joke to share and was well known and liked around the town, often seen riding his scooter and always had time for a wave and a chat.

Wals career change saw him become a bus driver for Buslink in Noosa. He soon became the heart and soul of the depot and was so happy, he loved his job. He was always reliable and gave so many such joy. He will be greatly missed by the students of Sunshine Coast grammar on his bus run, and his work colleagues.

On behalf of the Welshpool and wider community we extend our sincere condolences to Wals family. He will be sadly missed by many.

In the words of a happy bus driver, "let's all bop along now, livin' the dream. Happy Days".

Alan (Wal) Hendrie 20.10.1965 – 9.1.2022

To the wonderful Welshpool and District Community:

We would like to express our extreme gratitude for all the support and thoughts provided by the Welshpool and District community on the sudden and unexpected passing on our beloved son, father and brother, Alan (Wal). The wonderful tribute to Wal held at the recreation reserve was a great reflection of the impact his cheeky personality had on the district, given that it is almost ten years since the family relocation to Queensland. What a perfectly touching way to remember the character that he was. We could feel the love and support from afar, and the video phone link was a special interaction with those in attendance. It was wonderful to see old familiar faces gathered together to remember old times and share Wal stories, of which there are plenty, most with a humorous element!

How fortunate we were as a family, to be part of a wonderful country community.

We would like to particularly thank Eddie Fowler and David Grylls for arranging the gathering. A special thank also to Ian and Shelly Conn, David and Ben Grylls, Max and Vicki Bennett-Wood, and Trevor Venning, for travelling to Queensland to support us at this challenging and sad time.

Thank you also for the flowers, cards and messages of love and thoughts.

As Wal would say....

"Job's Right"

"Toodle Pip"

Eva. Julie. Rvan. Abbev and Ebonv.



**E.W. & H.P. FOWLER
WELSHPOOL OUTDOORS &
ORIGIN GAS SUPPLIES**

**19 MAIN STREET
WELSHPOOL VIC 3966
PH: 0356881304
EMAIL: welshpooloutdoors@bigpond.com**



**Welshpool Outdoors
Now suppliers for AgBoss
All Australian Made
Australian Owned**



**Corner Inlet Swimming Club
Dolphins**

The Corner Inlet Swimming Club (CISC) welcomes existing and new families to start of our 2022 training season commencing Term 1, Monday 24th January

When: Mondays Senior Squad 5.30pm – 7pm
Junior Squad 5.30pm – 6.30pm
Wednesdays Senior Squad 5.30pm – 7pm
Junior Squad 5.30pm – 6.30pm

Where: Toora Swimming Pool

Why: Fun, Fitness, Technique, Endurance, Competition

Who: 8yo to 100+yo who can competently swim 2 laps of the pool in 3 strokes

What to Bring: Goggles, Flippers, Water Bottle, Towel

Covid: Please arrive 10 min prior to session to allow time to complete the Pool & CISC Covid registers. Masks & social distancing rules apply

Contact: Jill 0417 582 180 or Wil 0407 747 667
dolphiniscisc@gmail.com
Facebook: Dolphins – Corner Inlet Swimming Club


**Come and try
First session FREE**
(Pool entry fees still apply)

CISC is a family friendly swimming club offering accessible training where members can improve swimming fitness, technique and challenge themselves to achieve personal best times.

“Ribbons are a bonus, not a focus!”

**114th
Foster
& District
AGRICULTURAL**

**4th Saturday
in February**

www.fostershow.com 

**Woodchop
Dog High Jump
On Farm Competitions
Young Farmers Challenge
Yellow Brick Road
Sheaf Tossing
Photography
... and
all your
usual
favourite
events**



Show

**Saturday 26th February 2022
Foster Showgrounds Station Rd FOSTER**

Mini Bread Quiches

Ingredients

12 slices bread, crusts removed
100gm zucchini, coarsely grated
¼ cup (30g) coarsely grated tasty cheddar cheese
2 rashers rindless bacon, finely chopped
1 tbsp chopped chives
3 eggs, lightly whisked
1 tbsp milk



Method

Step 1 – Preheat oven to 180°C. Grease 6 holes of a 1/3-cup (80ml) muffin pan. Place 1 slice of bread on a clean working surface. Arrange another slice of bread on top at a 45-degree angle. Use a rolling pin to roll out bread slices until 5mm thick. Repeat with remaining bread slices. Line the prepared holes with bread, pressing down firmly. Spray with olive oil spray. Bake for 15 mins or until just golden.

Step 2 – Combine zucchini, cheddar cheese, bacon and chives in a bowl. Divide evenly among the bread cases. Whisk the egg and milk in a jug and pour evenly over the zucchini mixture. Season. Bake for 20-25 mins or until the egg mixture is light golden and just set. Cool slightly. Serve warm or at room temperature.

(Mini quiches can be made up to 4 days ahead. Store them in an airtight container in the fridge.)



WELSHPOOL POST OFFICE

20 Main Street Welshpool Phone: 5688 1419

Email: welshpoolpostal@bigpond.com

Unlocked Handsets Available

Opel Flip 4G network enabled



Oppo A54 Android Ver 11.0



Offer valid til 27/02/2022

Port Welshpool and District Maritime Museum

As the calendar flicks over for another year we wonder what this year has in store for us. You never know what is in front of you as it is, but now we have a new way of life living with Covid and all that it has brought. As many generations have faced and learnt how to handle all that had been thrown at them, as they learnt along the way, the same as we are now.

As the Museum 2021 closed with our A.G.M. A new President was elected and we thank Rodney Grylls who stepped up to the position. Fran Grylls has retired from the Presidency but has stayed a very valuable member and we thank her for her dedication over the years. With Rodney leading the Committee, Greg Gordon is in charge of finances and Janet Taylor as Secretary.

With all the Covid restriction the Museum has had its doors closed a good part of the year but with a very dedicated volunteer team the Museum has survived.

During 2021 the Committee was very fortunate to have a few donations that have been very gratefully received and for those we thank the Port Welshpool Working Group and the Port Welshpool Fishing Club. At present our 141 year old building is getting a face lift. Built by John Avery from Port Albert; John walked from Port Albert on a Monday, to build this to be family home for my Grandfather and his soon to be bride Elizabeth from Tarraville. Yes John walked, remembering it was 1881. This builder was known for his good workmanship and this building has stood the test of time. Over the years borer and white ants have been a challenge but we humans have won. Solidly built its only fault as it has aged has been the building has no footings as is required for today's builds but she sits on rocks, well it was 1881 and regulations were much different then. Where these rocks came from we do not know, but guessing the times it probably was from a local area or may be even ballast from a ship, we will probably never know. Wherever that may be they once came in very handy; if you were looking for something to make a mould from so you could make lead sinkers these rocks were ideal. With a Primus, a saucepan and lead from batteries the process began. Make your sinkers then return the rock to under the house, job done. After all it was the age of improvising.

So as the process for the up lift begins we watch with eagerness as she is lifted from the rocks and in some places the earth. We say thank you to everyone concerned for their interest in keeping this grand old lady a very important land mark for history for us all. With a fresh coat of paint and some new shelving all displays will give a better show of what treasures have been stored in her four walls. Further into the year and with Covid regulations permitting, the Museum Committee hope to be able to have guest speakers to help spread knowledge of the history of the area. An oral history day where you can tell your stories of history you have memories of or maybe some photos that can be shared all in the keeping for future generations to come as it would be a shame for us to take history to our graves when we have a time and place for it to be recorded for others to look back on.

For now the Street Library is still being well used which is great to see, but, if it happens to disappear it is only because of the renovations and it will be back.

So from the Committee and Members of the Museum we wish everyone a safe and happy 2022 and we look forward to seeing you when we open again later in the year or if you would like to help out in anyway your help would be much appreciated.

Contact Janet on 0413199776. Cheers.



PROM RECITALS PRESENTS

Celebrate Her

Salon Project

PERFORMING

Music, She Wrote (2.0)

Louisa Trewartha/AUSTRALIA

Amy Beach/USA

Lācīja Garūta/LATVIA

A DYNAMIC QUARTET OF YOUNG MELBOURNE MUSICIANS PLAYING
WORKS BY SIX WOMEN COMPOSERS FROM FIVE DIFFERENT COUNTRIES

Elena Kate Chernik/AUS/UKRAINE

Fanny Mendelssohn/GERMANY

Nadia Boulanger/FRANCE

A VERY SPECIAL EVENT TO CELEBRATE THE ACHIEVEMENTS OF WOMEN
IN THE WORLD OF MUSIC AND THE WOMEN OF SOUTH GIPPSLAND

Supported by Creative Victoria and Regional Arts Victoria.

WONTHAGGI UNION COMMUNITY ARTS CENTRE

SUNDAY 13 MARCH, DOORS OPEN 1.30PM

PERFORMANCE 2.30PM - TICKETS \$55

www.trybooking.com/BWFSI

REGIONAL
ARTS
VICTORIA

CREATIVE VICTORIA

This performance will be presented under any public health restrictions and COVIDSafe settings applicable on the day.

PROM
RECITALS

promrecitals.org.au

Celebrating Classical Music
in Prom Country

Danny O'BRIEN MP

Member for Gippsland South

- 54B Cunninghame St, Sale VIC 3853
- 03 5144 1987
- danny.obrien@parliament.vic.gov.au
- www.dannyobrienmp.com.au

Working for Gippsland South

[f](#) [t](#) [i](#) /dannyobrienmp

THE NATIONALS for Regional Victoria



FOSTER SEAFOODS



35 Main Street, Foster

Ph: (03) 5682 2815

With catches of Inlet fish arriving within the shop on a daily basis and our vessels returning from extended trips into Bass Strait, you can be assured that the quality is second to none.

We also have an extensive list of products with very competitive prices.

True friends
are never apart
maybe in
distance but
never in heart

Welshpool

Hotel Motel



Our bistro is open and we
can't wait to have you back
for a meal this summer!
Give us a call to book a
table

Main Street Welshpool, Vic 3966

Contact: **SHANE**

Ph/Fax: (03) 56881309

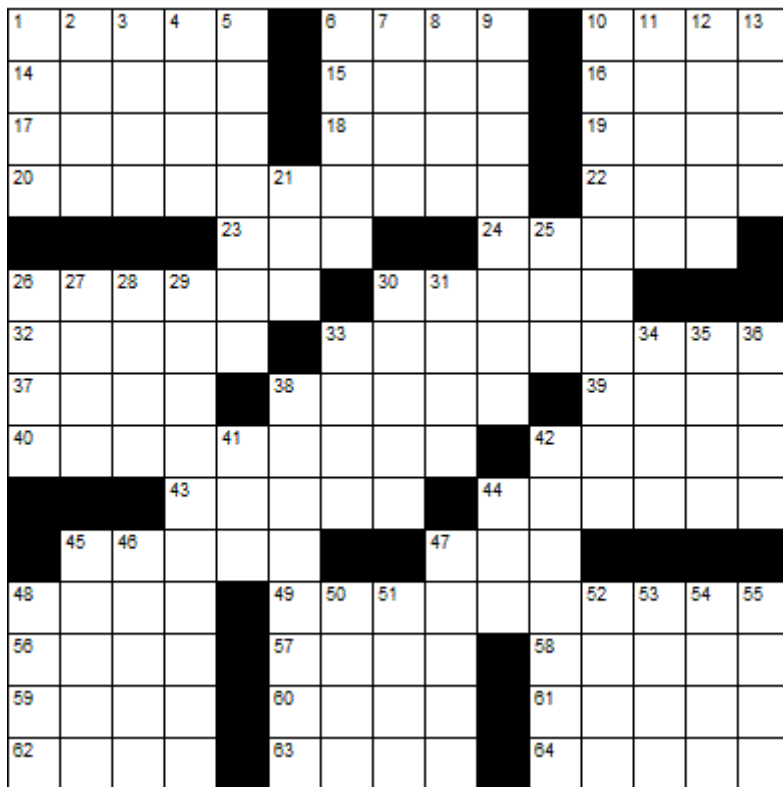
BUTTERFLY PASSENGER SERVICE

Butterfly Passenger Service is
available to all South Gippsland
residents who have to travel to shops
or to attend medical appointments
during COVID 19 restrictions.

If you don't have your own transport
and need to be somewhere please call
Kerry on 0411 334 236 to discuss your
travel requirements and get a quote.



CROSSWORD



Down

1. Coalition
2. Verdant
3. A single time
4. Food thickener
5. In a concise manner
6. Secluded valleys
7. Wander
8. Nile bird
9. Skunks
10. Tree-boring bird
11. Worship
12. Pariah
13. To be, in old Rome
21. In song, the loneliest number
25. American Dental Association
26. Provide nourishment
27. Qualified
28. Jacket
29. Vaccinate (alt. spell.)
30. Japanese wrestlers
31. Russian emperor
33. Spouse
34. Group of cattle
35. If not
36. Extent
38. European house martins
41. Apprehend
42. Raptor
44. Container
45. Vaulted
46. Unpaid
47. Homes for birds
48. Harvard rival
50. Diva's solo
51. Numerous
52. Dwarf buffalo
53. Make unclear
54. Tardy
55. Gave the once-over

Across

1. Distend
6. Handle
10. Welt
14. Move forward suddenly
15. Gray wolf
16. Poems
17. Academy award
18. Wicked
19. Klutz's cry
20. A peninsula
22. To endure (archaic)
23. N N N N
24. Escapade
26. Eloquent
30. Ancient Greek unit of length
32. Hard wood
33. Growths of upper lip hair
37. Dash
38. Mommies
39. Large brown seaweed
40. Blasting cap
42. Vice ____
43. Concerns
44. Encumbrance
45. Uncertainty
47. Zero
48. Distressed cry
49. Deplorable
56. Dogfish
57. Historical periods
58. To untwist
59. Gave temporarily
60. Hue
61. Way to go
62. Border
63. Articulates
64. Dog-____



Winning entry will receive a free coffee and cake from the Welshpool Café & Supermarket



LAST MONTHS CROSSWORD RESULT

T	A	M	P	S		G	I	F	T		W	A	D	E
U	N	I	O	N		A	M	A	H		A	L	E	S
S	T	E	N	O		S	P	U	R		N	I	P	S
H	I	N	D	U	S	T	A	N	I		D	A	T	A
						T	A	R	S		F	L	E	S
W	E	E	P			L	O	T			T	A	R	
E	T	C	H			S	P	O	T		B	L	O	O
B	A	C	A	L	A	O		A	S	S	U	A	G	E
S	T	E	R	E		D	R	I	P		S	T	E	M
						M	U	G			E	L	L	
P	A	R	A	D	E						T	W	I	T
E	P	I	C			I	R	R	I	T	A	T	I	O
R	A	N	I			S	E	E	N		C	A	D	G
I	R	K	S			H	E	A	D		T	U	L	L
L	A	S	T			A	D	D	S		S	T	E	E

Sponsored by: **Welshpool Supermarket**

Entries must be received before

15th March, 2021

All correct entries will be put into a hat and the winner will be drawn by Supermarket staff. No correspondence will be entered into etc.

Please remember to double-check your spelling.

Remember to include your name, contact number and date on your returned entry, Thank you.

Winner of the December Crossword:

Di Casey



Community Group Listing

- ***Welshpool & District Advisory Group** – Contact: Linda Razinger 03 5688 1051
- ***Welshpool Fire Brigade** – training every Thursday night 7.30pm
- ***Welshpool Recreation Reserve** – Contact: Madelaine Mason 0409 976 211
- ***Welshpool Basketball Association** – Contact: Madelaine Mason 0409 976 211
- ***Prom Coast Soccer Club** – <http://www.promcoastsoccerclub.com.au/>
Contact: Shellie Cashmore 0419 322 384
- ***Welshpool Memorial Hall** – Contact: Alan O'Neill 5688 1419
- ***Friends of Agnes Falls** – <https://www.facebook.com/FriendsOfAgnesFalls/>
- ***Port Welshpool Fishing Club** – Contact: Jenny Horner 0428 862 028
- ***Port Welshpool Working Group** – Contact: Alma Mattingley 0427 310 599
- ***Welshpool & District Playgroup** – <https://www.facebook.com/WelshpoolPlaygroup/>
- ***Welshpool & District Horticultural Society** – meeting every 2nd Wednesday of the month.
Contact: Tom Reakes Ph. 0429966002
- ***Port Welshpool & District Maritime Museum** – Email: pwmuseum@gmail.com
- ***Port Welshpool Coast Guard** – Contact: Peter Carrolan 0417 372 059

Community Planning



Last month two members of the Welshpool and District Advisory Group (WDAG) committee attended a Community Planning Network workshop presented by the South Gippsland Shire Council. A great deal of information was received as well as some invaluable ideas for our future Community Plan.

Thank you to the members of the local community who returned the "Have your Say" forms. We received many forms with a variety of ideas for our local area.

In the near future there will be more information regarding the update of the Welshpool and District Community Plan and how you can become involved. Community members and residents of all ages, workgroups, committees, local businesses, sporting groups and all interested parties will be invited to take part in planning for your future!

Stay tuned for more information or feel free to visit the Welshpool Rural Transaction Centre with any queries you may have.



Supporting your community Sponsorship Program now open

When you choose to bank with Bendigo Bank, good things happen in your community.

Find out more. Call 03 5686 2000 or search Bendigo Bank Toora, and request a sponsorship application form today.
bendigobank.com.au

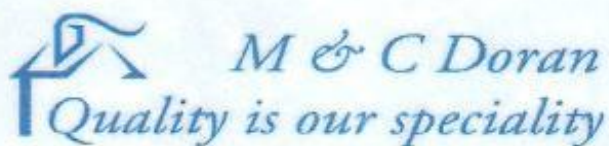
Bendigo Bank

Bendigo and Adelaide Bank Limited ABN 11 080 046 170, AFSL/Australian Credit Licence 230787A/1380136, CLT_0000147, 30/01/2021

Opens 1.2.22, closes 28.2.22

Email admin@pdfg.org.au for more details and a application form

LOCAL SERVICES.....



Michael Doran
Qualified Carpenter & Joiner

16 Turnbull Street
Port Welshpool VIC 3965
Email: buildingservices@mcdoran.com.au
Ph. 03 5688 1229
Mb. 0429 038 409
Fax. 03 5688 1377



John Hoy
Trade qualified Farrier
(25 years experience)

0447 229 390

**Lawn mowing & Maintenance, Rubish removal, Painting
Window cleaning, Gutters cleaned, High presure washer**

Lawn mowing & Maintenance

Free Quotes reasonable rates local tradesman



Dave Mcleish
Port Welshpool

0417 538 683

davemcleish@live.com.au



Maintenance & Repairs to...
TRUCKS * TRACTORS * MACHINERY * PASSENGER & FOOD TRANSPORT VEHICLES
Ian Dubignon **M. 0448 761 642**

DIGITAL - TV - ANTENNAS
TV & PHONE POINTS TV & VCR TUNING

HOME THEATRE ALARM INTERCOM INSTALLATIONS

ANDY
PH: 0412 445 554

COMMERCIAL UPGRADES
DIGITAL INSTALLATION
SPECIALIST

ABN 69 653 510 722
ACA REG B18282VIC



FOR ALL YOUR TREATED PINE NEEDS

POSTS SAWN TIMBER DECKING CUSTOM TREATING
SLEEPERS NUTS AND BOLTS PALINGS AND MORE

SOUTH GIPPSLAND HIGHWAY, ALBERTON, VIC, 3971

Ph (03) 5183 2437 Fax (03) 5183 2659 Email sales@albertontimber.com.au

CONCRETER



0400 840 729

WWW.SGCONCRETE.COM.AU

TV & DATA SYSTEMS

Digital Antennas, TV wall mounts, Data & Computer outlets, Home Theatre, Hidden Wiring, Networks, Offices, CCTV, Repairs, Equipment Installations

Licensed Cable Installer

Domestic, Commerical & Industrial

Steve Mooney 0427 257 222

SOUTH GIPPSLAND SEPTIC TANK CLEANING

Also Portable Toilets Hire

Call Chris Whittle

(03) 5688 1572



Kirwan Builders

TK Construction

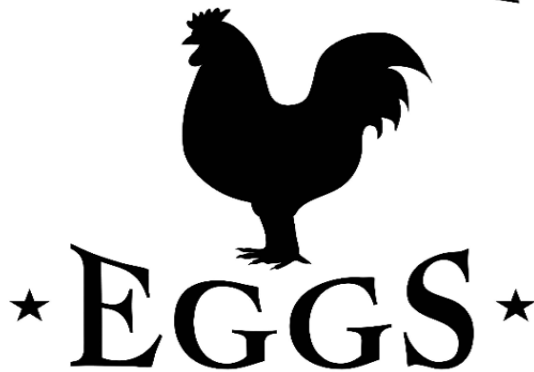
"for all your building needs"

TK Construction - Michael Kirwan
6565 South Gippsland Highway HEDLEY VIC 3967
P: 03 5184 1223 | M: 0428 911 900
E: kirwanbuilders@gmail.com

HIA MEMBERSHIP: 813 711 | DB-U: 20399 | A.B.N: 40 896 158 242

Available at the Welshpool Op Shop

— FARM —
FRESH



\$6 Dozen



Foster Golf Club
7 Reserve Street
Foster Victoria
3960

19
Chantelle Peters (03)5682 2272
golfclub19@outlook.com.au

ANTHONY BRAVINGTON

Cleaning & Property Maintenance Contractor

- Commercial Cleaning, Domestic Cleaning and all types of Property Maintenance
- Accommodation Contracts
- Office Building Contracts
- Retail Shops Contracts
- School Cleaning Contracts
- Builders Cleans
- All Property Maintenance etc
- Window Cleaning
- Carpet Steam Cleaning

THURSDAYS & FRIDAYS ONLY

1 bedroom house	\$70
2 bedroom house	\$90
3 bedroom house	\$120
4 bedroom house	\$150

Call Anthony for all your cleaning needs

Mobile: 0418 146 986

Email: anthonybravington@bigpond.com



Is your block a fire Hazard

**On Shore
Property Maintenance**

We Offer

Removal of Rubbish
Tree Trimming
Gutters Cleaned
Pressure Washing
Solar Panels Cleaned
General Maintenance
Fencing
Excavator Hire

0455 997 752

0432 529 721

**On Shore Property
Maintenance**

**BE SO HAPPY THAT
WHEN OTHERS
LOOK AT YOU,
THEY BECOME
HAPPY TOO.**

SCHOOLS ARE BACK

**TAKE EXTRA CARE
DURING SCHOOL TIMES**





Valentine's Day

February 14th

T	S	E	R	A	E	D	D	I	P	U	C	E	Z	C
S	T	S	S	E	E	B	E	O	M	U	W	V	H	D
T	R	R	S	N	N	N	E	B	S	O	K	O	J	N
F	A	E	E	I	G	M	E	M	R	N	C	L	B	E
I	E	W	C	T	A	S	W	R	I	O	R	H	O	I
G	H	O	N	N	P	A	A	P	L	N	O	R	Y	R
I	H	L	A	E	M	F	L	A	H	N	E	V	F	F
L	U	F	M	L	A	F	T	B	G	D	D	X	R	L
O	G	V	O	A	H	E	C	U	B	Y	A	W	I	R
V	O	G	R	V	C	C	U	R	E	N	R	E	E	I
E	T	R	A	E	H	T	E	E	W	S	L	R	N	G
Y	E	R	R	I	O	I	D	H	F	W	I	O	D	E
O	A	N	I	R	T	O	P	C	K	K	N	D	N	D
U	R	O	S	E	S	N	K	I	S	S	G	A	Q	A
E	C	A	N	D	Y	D	E	V	O	L	E	B	E	R

ADORE
AFFECTION
ARROW
BE MINE
BELOVED
BOYFRIEND
CANDY
CHAMPAGNE
CHERUB
CHOCOLATE

CUPID
DARLING
DEAREST
FLOWERS
GIFTS
GIRLFRIEND
HEARTS
HUG
I LOVE YOU
KISS

LOVE
PINK
POEM
RED
ROMANCE
ROSES
SWEETHEART
VALENTINE



			2	9	3	6		
		6		8			9	
8						7		
			9	7		2	8	
	5							9
				3			4	
	6	9		2				
1		2	5					
5	3						7	



Valentine's day Sudoku

Every row, column and mini-grid must contain the letters L O V E B I R D S. Don't guess - use logic

		R		B		V		
	D	L	E		V	B	S	
			O		I			
R		B		V		E		D
		D		E		O		
O		E		L		I		R
			V		R			
	B	S	L		E	D	R	
		I		D		L		



December Solution

5	1	7	6	2	4	8	3	9
8	4	9	3	1	5	2	6	7
2	6	3	7	9	8	4	1	5
7	8	6	5	4	3	9	2	1
4	2	5	9	6	1	7	8	3
3	9	1	2	8	7	6	5	4
9	3	4	8	5	2	1	7	6
6	5	2	1	7	9	3	4	8
1	7	8	4	3	6	5	9	2