



Welshpool Op Shop / Nursery

We are pleased to announce that the Welshpool Op Shop / Nursery will be open every Saturday from 10am to 2 pm. Thank you to our wonderful volunteers for helping make this happen.

We are currently having a huge clothing sale. **Fill a bag of clothes for only \$5.** We have a wide range of mens, womens and kids clothing available.

Our flower and seed display has also been topped up with the upcoming season varieties. With all packets still only \$2 each why not try growing your own crop. There are plenty of different vegetables and flowers to choose from.

All books are still only 2 for \$1 so if you're looking for something to fill in your day be sure to call in and have a look at our wide range of reading material.

With plenty of furniture, crockery, clothes, books, toy, games and nick knacks you are sure to find yourself a bargain or two. We look forward to seeing you all soon.



GRAB A BARGAIN!!
Fill a bag with clothing for \$5
Limited time only



New seeds have arrived in preparation for Winter planting. With our wide variety of seeds available there is sure to be something to everyone's taste.

Disclaimer

This newsletter is an independent self-funded publication produced by staff and volunteers of the RTC and it does not reflect the opinions of the Committee members, South Gippsland Shire, or the Department of Planning and Community Development.



TRADING HOURS

MON - FRI

10.00AM - 3.00PM

- WELSHPOOL COMMUNITY LIBRARY
- BENDIGO BANK AGENCY
- CENTRELINK AGENCY
- V/LINE TICKETING OFFICE
- ROOM HIRE AVAILABLE
- PASSPORT APPLICATIONS
- COPY & PRINT SERVICES

Other services by appointment only

- Diabetes Clinic – 5683 9780
- Gibson Accounting – 5176 2031
- Royal Flying Doctors – 03 8412 0480



Centrelink Website

The Centrelink website (www.centrelink.gov.au) has been incorporated into the Department of Human Services website humanservices.gov.au. The new site is a convenient, single entry point for health, social and welfare payments and services.

Any questions regarding your payments or entitlements, this would be your first port of call.

- ***You are able to register online and access details of your account.***
- ***Find out the latest information regarding services.***
- ***Calculations can be done to work out family assistance.***
- ***Access forms and brochures.***

A touch screen computer is available at the Welshpool Rural Transaction Centre for your use.

Staff at the Centrelink agency are able to assist you with registration etc.



VLIN BUS SERVICES

**Purchase tickets at the
Rural Transaction Centre or
collect a VLINE Bus Timetable**

DIABETES CLINIC

Wednesday 31st March

If you would like an appointment
or have any queries, please contact

Karen on 03 5683 9780



Gibson Accounting

Kieran Olree

PH: (03) 5176 2031

Fax: (03) 5174 6313

101 Hotham Street
Traralgon, Vic 3844

Email: kieran@gibsonaccounting.com.au

Kieran Olree is at the RTC every Wednesday

By appointment only - **(03) 5176 2031**

For more information and all the latest tax
updates and handy hints for tax time,
please visit Gibson's website:

www.gibsonaccounting.com.au



Port Welshpool Working Group
Market

Sunday 28th February

9am – 2pm

Old Ferry Terminal
Port Welshpool

Covid rules apply

Welshpool & District Horticultural Society Inc.
60TH AUTUMN SHOW

*The magic
of diamonds*
featuring the colour silver



Friday 5th March 2021 1:30pm - 5pm
Saturday 6th March 2021 10am - 4pm

Welshpool Memorial Hall,
South Gippsland HWY Victoria

Admission \$5
Children free

Plant stalls
& Refreshments

COVID - SAFE PROTOCOLS OPERATING

Acting Secretary - Prue Fleming Tel: 03 5682 2701 Mob: 0418 775 717
P O Box 306 Foster 3960 Email: pruefleming@bigpond.com
Entries to be notified to Prue by 6pm Wednesday March 3th.

Friends of Toora Heritage Pear Orchard. inc



*Pear Harvest &
Family Fun Day.
Mar 7th. 10-4pm.*

Come & Pick Your Own Pears. \$6. Bags supplied.

Musicians (Busking style).

Children's Games & Activities.

Lions BBQ & drinks. For Kids Cancer Research.

Plant & Produce Stalls. Gurneys Pear Cider.

BYO Chairs or Blanket. Picnic & Enjoy the Music.

Entry by Donation.

Toora Cafes & Galleries open.

Stroll around our Heritage Town Walk.

More Information. Meryl. 0428864520.

Covid Regulations will apply.

**Fight kids'
cancer.**



Happy story.

Ava, now ten and free of cancer due to funds donated by the Australian Lions Childhood Cancer Research Fund.

This year we aim to raise over \$250,000 and to do so we need your support.

Come to the Lions Biggest BBQ!

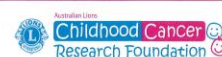
All funds raised will go towards the fight against kids' cancer.

Where TOORA HERITAGE PEAR ORCHARD.

When SUN. 7th MARCH

Lions Club of TOORA

Every child deserves a chance at a healthy life
Our Vision: 100% survival for kids with cancer



The Australian Lions Childhood Cancer Research Foundation is a Category 'A' Project of Lions Australia.

Welshpool RTC



MARCH SPECIAL

Bisley 3 pack Socks \$15

Workwear and Hi Vis Clothing

In Stock & available to order

Call in or phone 56881051



**The Welshpool Agency hours remain as
Monday to Friday 10am to 3pm**

**A friendly reminder we will be
closed on Monday 8th March for
the Labour Day Public Holiday**

**The Rural Transaction Centre still have a range of
beautiful locally handmade ceramics and macramé
items for sale. The perfect gift for someone special.**



The South Coast Primary and Community Partnership, Bass Coast Shire Council and South Gippsland Shire Council have released a Community Guide to Local Health Services and Supports to assist the public to access services available right here in the local South Gippsland and Bass Coast region.

This resource focuses on local services ranging from health and welfare organisations through to mental health, youth, financial and food relief services and community houses. State Government hotlines and 24 hour support services are also included.

A copy of this Guide can be found on the South Gippsland Shire Council website, or for a **FREE** hard copy please call in to the Welshpool Rural Transaction Centre.

Community Guide to local health services and supports





Prom Coast Soccer Club

Want to Play SOCCER?

**Come down and have a kick,
and register your interest.**

- Who:** All Ages, Abilities & Genders
5yo - Adult
- Where:** Welshpool Recreation Reserve
Port Welshpool Rd, Welshpool
- When:** Wednesdays starting 24th February
- Time:** 5yo - 11yo, 5pm – 6pm
12yo – Adult, 5.30 – 6.30pm
- Bring:** Water Bottle, Shin Guards

Covid Safety Rules Apply
Sign in at Canteen Window Prior to Playing.

More info needed? – Call/text 0419 322 384



School Leaders



Last week we presented our school leadership badges for 2021

Congratulations to the following students:

Remi & Reanna who are our School Captains

Gemma, Faith & Malaika who are our Student Leaders.

****Open Saturday, Sunday & Monday 10am – 4pm****

Phone 0400 110 318

the Olive Branch 35 Main Street
Welshpool
Prom Country

NO MASK

NO ENTRY

STEP BACK IN TIME!

Plenty of Gift Ideas for Xmas

Bike Hire on Hold at the moment – Due to Covid



*Drinks and Snacks.
Coffee and Cake*



*Retro, Collectables and Bric a brac
We Buy and Sell*



Supporting
local products
Honey, Jams,
Gift Ideas etc.
Fresh Product
when available

ALL visiting the area will be
asked for ID



Welshpool Golf Club

Congratulations to Di Walker and Sue Brown representing Welshpool at the South Gippsland Women's Opening Day at Korumburra on February 12th. A fantastic 44 points saw them runners up in B grade on a count back. Well done ladies.



Port Welshpool & District Bowling Club

Port Welshpool was represented by 2 teams at Pakenham Bowls Club for the Crowley Family Memorial Day held on 7th February. Here we are pictured with Gary Crowley (centre) and his cousin Peter Jonas (left). Gary's brother, Geoff, was a long serving member of our club and their parents were founding members of Pakenham BC. This connection to both clubs has seen Gary bring several players for many, many years to attend our Annual Tournament and us doing the same for The Crowley Family Memorial Day. We all had a great day and it was a fantastic experience under the "Paky-Dome" - the newly completed roof over their green.



**Big on products.
Big on service.
And big on local banking**

We deliver the products and technology you'd expect from a big bank, plus the personal service you wouldn't.

And while we've grown into Australia's 5th biggest retail bank, our heartland remains firmly local. As does our focus. On you and the quality banking products you need.

Feel good about who you bank with. Try Bendigo.

Find out more. Call 5688 1051 or search Bendigo Bank Welshpool.

bendigobank.com.au

**BANK
LOCAL**

Bendigo Bank

**Community Bank
Toora & Foster and Welshpool**

Bendigo and Adelaide Bank Limited ABN 11 068 049 178, AFSL/Australian Credit Licence 237879 A1455027 OUT_1824003, 08/02/2021

**E.W. & H.P. FOWLER
WELSHPOOL OUTDOORS &
ORIGIN GAS SUPPLIES**

**19 MAIN STREET
WELSHPOOL VIC 3966
PH: 0356881304
EMAIL: welshpooloutdoors@bigpond.com**



**Welshpool Outdoors
Now suppliers for AgBoss
All Australian Made
Australian Owned**

SOUTH GIPPSLAND SHIRE COUNCIL

The Great Southern Bale Trail

The Great Southern Bale Trail (GSBT) is a new and exciting project in South Gippsland. GSBT celebrates art and agriculture on local farms with local farmers.



In Autumn 2021, we are building an art trail that consists of six creative installations on South Gippsland properties across the Shire.

All installations will be made from either silage, old farm machinery, existing fencing and sheds, (or all of these), and will be based around the theme of 'seasonal cycles'.

All installations will be temporary and viewable from a publicly accessible road and a budget for materials is available for each project (this is organised by the project manager).

This project will provide a unique opportunity for locals and visitors to explore South Gippsland and there is also a map to help you find each creative project.

We are looking for farmers to join us to be part of this project!

GSBT will happen in three different ways:

- Farmers can make their own creation,
- Farmers can work with a local artist to make something together, or
- Farmers can simply offer the use of their property for an artist to come and make something for them.

If you are a South Gippsland farmer and you would like to get involved, please visit:
www.southgippsland.vic.gov.au/gsb

Or, if you would like more information or would like to apply over the phone, please contact Mary Sullivan on 56629210 or mary.sullivan@southgippsland.vic.gov.au

The project is part of Council's \$2M COVID-19 Community Support Package.



Corner Inlet Swimming Club Dolphins

The Corner Inlet Swimming Club (CISC) welcomes existing and new families to start of our 2021 training season commencing Term 1, Monday 1st February

When:	Mondays	Senior Squad 5pm – 6.30pm Junior Squad 5pm – 6pm
	Wednesdays	4pm – 5.30pm (Juniors and Seniors)
Where:	Toora Swimming Pool	
Why:	Fun, Fitness, Technique, Endurance, Competition	
Who:	8yo to 100+yo who can competently swim 2 laps of the pool in 3 strokes	
What to Bring:	Goggles, Flippers, Water Bottle, Towel	
Covid:	Please arrive 10 min prior to session to allow time to complete the Pool & CISC registers. Masks & social distancing rules apply	
Contact:	Jill 0417 582 180 or Wll 0407 747 667 dolphiniscisc@gmail.com Facebook: Dolphins – Corner Inlet Swimming Club	

**Come and try
First session FREE**
(Pool entry fees still apply)

CISC is a family friendly swimming club offering accessible training where members can improve swimming fitness, technique and challenge themselves to achieve personal best times.

“Ribbons are a bonus, not a focus!”

Welshpool Op Shop & Nursery

Monday to Friday

10am – 4pm

Saturday 10am – 2pm

PH: 0474 591 014



RTC Rooms for Hire

Office Hire : \$11 per hour

\$33 per day

Consulting Room : \$27.50 per day

Meeting Room Hire : \$38.50 per day

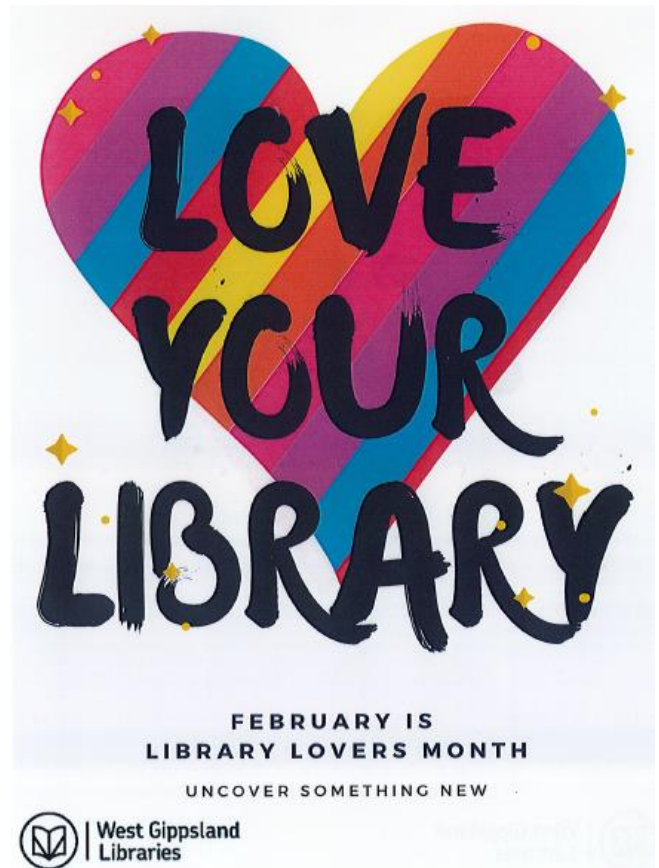


West Gippsland
Libraries

Located at the Welshpool RTC

Open Monday to Friday

10am to 3pm



WELSHPOOL POST OFFICE

20 Main Street Welshpool Phone: 5688 1419

Email: welshpoolpostal@bigpond.com

iPhone SE now available
- Check out our latest
catalogue for other
phone specials.



- 4.7" HD display
- 12MP rear + 7MP front camera
- 64GB memory
- A13 Bionic chip
- Touch ID
- IP67 Water & dust resistant



Find us on
Facebook

Port Welshpool and District Maritime Museum

"We Say Thank You for our Volunteers"

As you look around Australia you see how it is held up with very valued volunteers and none more so than in Gippsland. Port Welshpool has its share of these very important citizens. As with most towns it can always do with more, but it seems not everyone wants to commit, or if they would like to they don't have the time. Understandably, with other commitments of family life but just for the asking you will always find someone that is only too happy to help with special projects.

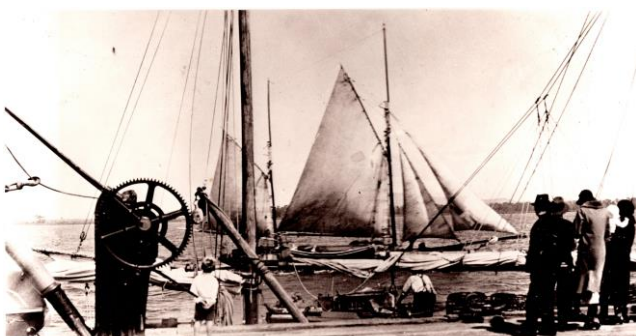
At the museum we have a crane that if only it could speak we would know more history of this once very used item of necessary equipment needed on a fishermen's jetty. Whether it was because the fishing fleet of Port Welshpool was slowly becoming depleted, or the crane was in much need of work to have it safe. Whatever the reasons it was saved to the museum, but over the years like everything it became apparent that it was in need of some repairs. This time so the visitors to the museum could view it with safety.

So... the cry went out for help. Machinery was needed as there was some heavy lifting to be had. Knowledge was a must as with everything and so the forces gathered. A huge thank you goes out to the men concerned as without this help this important piece of history would have lay on the ground forgotten. Well, not really because every time the grass was mowed the reminder was there. I say this important piece of history even though not much is known about it other than its uses. It can be seen in many photos going way back to the early 1900's and that in its self is important for new residents and visitors to the town as we help to keep history alive. We remember as kids growing up at the port, the great fun of the summer and swimming down at the jetty. Swinging out into the sea and dropping from the crane with no fear and then climbing on to the Cray cauffs back onto the jetty to repeat it, again and again. All healthy fun.

On a fishermen's jetty not only was this crane used for the usual winching of fish boxes, bagged cray's or ice from a boat to the jetty or vice versa but the Cauffs to the jetty and back again to the water to house the crays as they were kept alive to wait until transported to Melbourne market.

A boat found drifting at sea was once towed in to be winched out for the grateful owners to have salvaged. Cattle were also winched to an awaiting transport from the Tassie cattle boat back when this practice was acceptable. How things have changed for the better there.

When this crane was removed from the jetty it was replaced by another crane when another port was doing an upgrade but the replacement didn't last long by all accounts and was taken away never to be replaced again. So now the crane is back to its history's best and stands proudly in the grounds of the museum , we extend a very grateful **"Thank You"** to firstly Murray Rendell who did the asking, Rod Grylls, Greg Gordon for their help in the preparation needed and a **"Very Special Thank You"** to **Barry Beach Engineering, Gippsland Ports, Jeff Lipscombe, Jason Parrott, Phil Kosta and Ian Round**. Without everything you all brought to make this happen this grand piece of the Port Welshpool fishermen's jetty history would not sit proudly and be back in the air for all to see.



Welshpool
Supermarket
& Café

'Home Made Cakes'



OPEN 6 DAYS A WEEK

Monday to Saturday: 9am-4pm

Sunday: Closed

'Call in for a Latte'
Ph. 03 5688 1452

My mind is like
my web browser.
19 tabs are open,
3 are frozen and I
have no idea
where the music
is coming from.

FOSTER SEAFOODS



35 Main Street, Foster

Ph: (03) 5682 2815

With catches of Inlet fish arriving within the shop on a daily basis and our vessels returning from extended trips into Bass Strait, you can be assured that the quality is second to none.

We also have an extensive list of products with very competitive prices.

Danny O'BRIEN MP
State Member for Gippsland South

**SHOP LOCAL
AND SUPPORT
LOCAL JOBS**

Working for Gippsland South

(03) 5144 1987
danny.obrien@parliament.vic.gov.au
54B Cunninghame St, Sale VIC 3850
dannyobrienmp.com.au

Funded from Parliamentary Budget



"Take time to do what
makes your soul happy."



Bistro & Bar Meals:

Wed - Sun - 5pm-9pm
Fri-Sun 12noon-2pm & 5pm-9pm

Takeaway meals & drinks

Wed-Sun 5pm-9pm
Fri-Sun 12noon-2pm & 5pm-9pm
Call 5688 1309 to place your order
Bar & Bottle Shop OPEN 7 Days a week

Main Street Welshpool, Vic 3966

Contact: **SHANE**

Ph/Fax: (03) 56881309

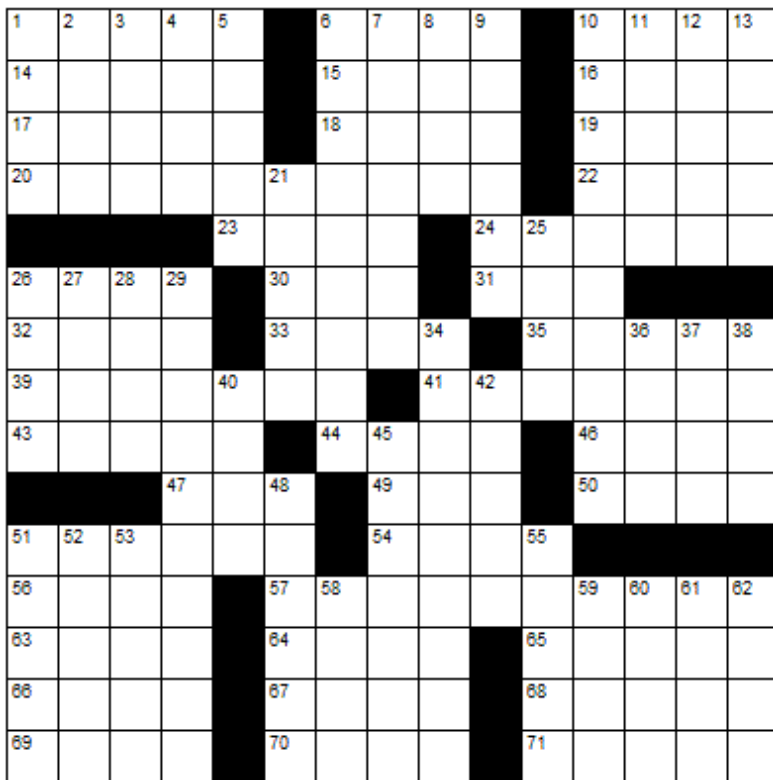
**BUTTERFLY
PASSENGER SERVICE**

Butterfly Passenger Service is available to all South Gippsland residents who have to travel to shops or to attend medical appointments during COVID 19 restrictions.

If you don't have your own transport and need to be somewhere please call Kerry on 0411 334 236 to discuss your travel requirements and get a quote.



CROSSWORD



Down

1. He writes in verse
2. Askew
3. Break
4. French for "Head"
5. Jagged
6. A guest cabin
7. A flask for carrying water
8. Balm ingredient
9. Holder
10. Interdependence of living organisms
11. Hawaiian veranda
12. Mires
13. Mixture of rain and snow
21. Long stories
25. Arizona river
26. Lacking intellectual acuity
27. By mouth
28. Abundant
29. In a non-hurting manner
34. Dreamers
36. Gull-like bird
37. Permits
38. God of love
40. Poems
42. Wizardry
45. In lieu
48. Generator
51. It pumps blood
52. Mistake
53. Bog hemp
55. Instruct
58. Was indebted
59. Emanation
60. Found over each eye
61. Deficiency
62. Large North American deer (plural)

Across

1. Adhesive
6. It forms on a wound
10. Shade trees
14. Proprietor
15. Story
16. Inner membrane of embryos
17. Muse of love poetry
18. Dwarf buffalo
19. A single time
20. Typographer
22. Body of water
23. Type of sword
24. Self-centered person
26. Anagram of "Prod"
30. Fury
31. 18-wheeler
32. Murres
33. Ice cream holder
35. Fine thread
39. A member of the Cosa Nostra
41. A loud kiss
43. Mix
44. Flexible mineral
46. Car
47. Directed
49. Henpeck
50. Young girl
51. Unorthodox tenets
54. Expectoration
56. Historical periods
57. Pronounced
63. Not legs
64. Amazes
65. Hearing-related
66. Agitate
67. Food from animals
68. Earthenware jar
69. 3
70. Probabilities
71. Paddles



LAST MONTHS CROSSWORD RESULT

L	O	R	E		S	C	A	P	E		R	U	M	P
A	B	E	L		T	O	N	A	L		E	S	A	U
N	E	E	D	L	E	W	O	R	K		V	A	T	S
D	A	D		A	R	E	N	A		R	O	B	E	S
S	H	Y	S	T	E	R		K	H	A	K	I		
				W	H	O		W	E	A	S	E	L	E
T	U	Q	U	E		W	H	E	L	P		I	D	A
A	L	U	M		E	R	A	T	O		A	T	O	M
R	N	A		S	P	E	C	S		R	H	Y	M	E
P	A	Y	C	H	E	C	K		D	O	E			
				S	L	E	E	K		R	U	M	M	A
I	L	I	A	D		A	R	A	R	A		E	L	M
R	I	D	S		E	G	O	C	E	N	T	R	I	C
O	D	E	S		C	E	D	E	S		N	I	N	E
N	O	S	Y		U	S	E	R	S		T	E	T	E

Sponsored by: **Welshpool Supermarket**

Entries must be received before

10th March, 2021

All correct entries will be put into a hat and the winner will be drawn by Supermarket staff. No correspondence will be entered into etc.

Please remember to double-check your spelling.

Remember to include your name, contact number and date on your returned entry, Thank you.

Winner of the December Crossword:

Lynn Gray



Community Group Listing

***Welshpool & District Advisory Group** – Contact: Linda Razinger 03 5688 1051

***Welshpool Fire Brigade** – training every Thursday night 7.30pm

***Welshpool Recreation Reserve** – Contact: Madelaine Mason 0409 976 211

***Welshpool Basketball Association** – Contact: Madelaine Mason 0409 976 211

***Prom Coast Soccer Club** – <http://www.promcoastsoccerclub.com.au/>
Contact: Shellie Cashmore 0419 322 384

***Welshpool Memorial Hall** – Contact: Alan O'Neill 5688 1419

***Friends of Agnes Falls** – <https://www.facebook.com/FriendsOfAgnesFalls/>

***Port Welshpool Fishing Club** – Contact: Jenny Horner 0428 862 028

***Port Welshpool Working Group** – Contact: Alma Mattingley 0427 310 599

***Welshpool & District Playgroup** – <https://www.facebook.com/WelshpoolPlaygroup/>

***Welshpool & District Horticultural Society** – meeting every 2nd Wednesday of the month.
Contact: Fran Grylls Ph. 5184 1376

***Port Welshpool & District Maritime Museum** – Email: pwmuseum@gmail.com
Contact: Fran Grylls Ph. 5184 1376

***Port Welshpool Coast Guard** – Contact: Peter Carrolan 0417 372 059

Port Welshpool Fishing Club

The Port Welshpool Fishing Club held their AGM on Saturday 23rd January. We would like to thank our outgoing committee for all the work they have done, and welcome in our new committee for the upcoming season. President - Jenny Horner, Vice-President – Ronnie Hunt, Secretary – Rob Ellis, Treasurer – Alma Mattingley.

Congratulation to our trophy winners from last season and a special thanks to Barb for your ongoing support in the kitchen. Once again we thank our ongoing sponsors for their continued support to our club.

Social Dinners Lock in the following dates for our upcoming social dinners, we hope to see you all there!

- **20 March 2021**
- **3 April 2021 (Easter Saturday)**
- **1 May 2021**

ALL Social Dinners start 7.00pm
(except for presentation dinner, this starts 6.30pm)

Presentation Night 12th June 2021 Start: 6.30 pm

On the night we will be drawing a Major Raffle,
you could be the lucky winner of:

A Trailer of Wood & a Chainsaw

Meal Cost: Members \$15 Non Members \$20

Everyone is welcome,
please come along and bring your friends and families!

RSVP to 0427 310 599 Friday before event



LOCAL SERVICES.....



M & C Doran
Quality is our speciality

Michael Doran
Qualified Carpenter & Joiner

16 Turnbull Street

Port Welshpool VIC 3965

Email: buildingservices@mcldoran.com.au

Ph. 03 5688 1229

Mb. 0429 038 409

Fax. 03 5688 1377



AAC MOBILE
AUTO AIR
CONDITIONING

Maintenance & Repairs to...

TRUCKS * TRACTORS * MACHINERY * PASSENGER & FOOD TRANSPORT VEHICLES

Ian Dubignon

M. 0448 761 642



John Hoy
Trade qualified Farrier
(25 years experience)

0447 229 390



WeighLess
With Julie Ray

Weight Loss Consultant
Specialising in Healthy Eating

RED ROOF STUDIOS

125 Commercial Road

YARRAM VIC 3971

PHONE 0429832346

TO MAKE AN APPOINTMENT

Lawn mowing & Maintenance, Rubish removal, Painting
Window cleaning, Gutters cleaned, High pressure washer

Lawn mowing & Maintenance

Free Quotes reasonable rates local tradesman



Dave Mcleish
Port Welshpool

0417 538 683

davemcleish@live.com.au



ALBERTON TIMBER
& TREATMENT PLANT P/L

FOR ALL YOUR TREATED PINE NEEDS

POSTS

SAWN TIMBER

DECKING

CUSTOM TREATING

SLEEPERS

NUTS AND BOLTS

PALINGS

AND MORE

SOUTH GIPPSLAND HIGHWAY, ALBERTON, VIC, 3971

Ph (03) 5183 2437

Fax (03) 5183 2659

Email sales@albertontimber.com.au

CONCRETER



SOUTH GIPPSLAND CONCRETE
ALL THINGS CONCRETE
ON-SITE TIMBER MILLING

0400 840 729

WWW.SGCONCRETE.COM.AU

TV & DATA SYSTEMS

Digital Antennas, TV wall mounts, Data &
Computer outlets, Home Theatre, Hidden
Wiring, Networks, Offices, CCTV, Repairs,
Equipment Installations

Licensed Cable Installer

Domestic, Commerical & Industrial

Steve Mooney 0427 257 222

SOUTH GIPPSLAND

SEPTIC TANK CLEANING

Also Portable Toilets Hire

Call Chris Whittle

(03) 5688 1572



Kirwan Builders

TK Construction

"for all your building needs"

TK Construction - Michael Kirwan

6565 South Gippsland Highway HEDLEY VIC 3967

P: 03 5184 1223 | M: 0428 911 900

E: kirwanbuilders@gmail.com

HIA MEMBERSHIP: 813 711 | DB-U: 20399 | A.B.N: 40 896 158 242

ANTHONY BRAVINGTON

Cleaning & Property Maintenance Contractor

- Commercial Cleaning, Domestic Cleaning and all types of Property Maintenance
- Accommodation Contracts
- Office Building Contracts
- Retail Shops Contracts
- School Cleaning Contracts
- Builders Cleans
- All Property Maintenance etc
- Window Cleaning
- Carpet Steam Cleaning

THURSDAYS & FRIDAYS ONLY

1 bedroom house	\$70
2 bedroom house	\$90
3 bedroom house	\$120
4 bedroom house	\$150

Call Anthony for all your cleaning needs

Mobile: 0418 146 986

Email: anthonybravington@bigpond.com



WASTE DISPOSAL

- Permanent bins & clean up skips
 - Commercial, household or farm waste
 - Cardboard recycling
 - Weekly, fortnightly, monthly
 - 1.5M3 OR 3M3 BINS
 - Locally owned & operated
- CALL OR EMAIL FOR A QUOTE

PH: 03 9794 5722

www.jjswaste.com.au

operations.melbourne@jjswaste.com.au

*"Your local name
in the waste game"*

**SCHOOLS ARE BACK
TAKE EXTRA CARE
DURING SCHOOL
TIMES**



Available at the Welshpool Op Shop

— FARM —
FRESH


★ EGGS ★

\$6 Dozen

SUMMER WORD SEARCH



A R E F J E T R I S U M M E R M I S
U S E S T O R Y W H P P O O I N O V
P E T F U N O I W O S R K T B H S M
S E A N I V M R U R N V I N A R E T
R M T O L M I D O T T P A N U L D I
C A M P I N G R O S P O S Y K R M Y
P X O N E E U I L K T O H N U F N N
L N G F S C R C I N P L V K D P S Z
E J A S U D G U H B L H O T Q N K V
I V W S E R Y M Z R K R J G S U M A
L L X A E U O R E L K N I R P S F C
F R U I T L G L N G T H A P O T D A
S S M R D E X H V N O O I A P H J T
S A D E O P R E H R B U E K S I O I
P I T D F I O M W V T K L B I I S O
D T K I O R T D E C L E F O C N G N
G R A S S S O Y A L P I S S L S G N
U V U T C N S L E M O N A D E N H I
S F I U T P F O I L O N E O W Y A T
R T R O A D T R I P I C N I C S R U

summer pool swimming camping
fun sun grass outside
hot sprinkler picnic road trip
shorts vacation watermelon play
fruit hiking popsicle lemonade

SUBADDO PYRAMID Easy

Each orange triangle connects a set of three numbers.
Two numbers must add or subtract to equal the third.
All numbers must be between 1 and 12 and no number
can be repeated in a horizontal row.
© Engaged Learning



		4			8		
			9	7		3	1
5							
4							
	1	3	5				7
		9		1			2
		2			5	9	
	7			4			
	4		1			8	

Back To School

How many words can you make from the phrase
"Back To School"

_____	_____
_____	_____
_____	_____
_____	_____
_____	_____
_____	_____
_____	_____
_____	_____
_____	_____
_____	_____

DECEMBER SOLUTIONS



8	5	9	2	1	7	3	6	4
6	4	1	8	5	3	7	2	9
3	7	2	9	6	4	8	1	5
7	1	6	4	8	5	9	3	2
9	3	8	7	2	1	4	5	6
4	2	5	6	3	9	1	7	8
5	6	7	3	4	8	2	9	1
1	8	3	5	9	2	6	4	7
2	9	4	1	7	6	5	8	3