

## Toora Grafting Day

On Saturday 14<sup>th</sup> August at the Toora Hall, a fruit tree grafting day was organised by the Friends of Toora Heritage Pear Orchard Inc.

Visitors were able to purchase rootstock at very reasonable prices and grafts of over 100 varieties of apples, pears and plums were available to choose from. A demonstration was provided by Neil Barraclough showing how to graft onto rootstock and some invaluable advice for caring for and planting of newly grafted rootstock.

Visitors were encouraged to try grafting themselves with on hand assistance or Neil was also available to graft the rootstock himself. Neil was kept busy all day happy to help out.

Meryl Agars from the Friends of Toora Heritage Pear Orchard Inc was pleased with the turnout and the positive feedback she received from those attending was encouraging.

The Grafting Day has been held a number of times in the past and will continue to be an event that is organised for future seasons.



### Disclaimer

This newsletter is an independent self-funded publication produced by staff and volunteers of the RTC and it does not reflect the opinions of the Committee members, South Gippsland Shire, or the Department of Planning and Community Development.



## TRADING HOURS

MON - FRI

10.00AM - 3.00PM

- WELSHPOOL COMMUNITY LIBRARY
- BENDIGO BANK AGENCY
- CENTRELINK AGENCY
- V/LINE TICKETING OFFICE
- ROOM HIRE AVAILABLE
- PASSPORT APPLICATIONS
- COPY & PRINT SERVICES

### Other services by appointment only

- Diabetes Clinic – 5683 9780
- Gibson Accounting – 5176 2031
- Royal Flying Doctors – 03 8412 0480



## Centrelink Website

The Centrelink website ([www.centrelink.gov.au](http://www.centrelink.gov.au)) has been incorporated into the Department of Human Services website [humanservices.gov.au](http://humanservices.gov.au). The new site is a convenient, single entry point for health, social and welfare payments and services.

Any questions regarding your payments or entitlements, this would be your first port of call.

- ***You are able to register online and access details of your account.***
- ***Find out the latest information regarding services.***
- ***Calculations can be done to work out family assistance.***
- ***Access forms and brochures.***

A touch screen computer is available at the Welshpool Rural Transaction Centre for your use.

Staff at the Centrelink agency are able to assist you with registration etc.



## VLIN BUS SERVICES

**Purchase tickets at the  
Rural Transaction Centre or  
collect a VLINE Bus Timetable**

## DIABETES CLINIC

If you would like an appointment  
or have any queries, please contact

**Foster Community Health on  
03 5683 9780**



Gibson Accounting

Kieran Olree

PH: (03) 5176 2031

Fax: (03) 5174 6313

101 Hotham Street  
Traralgon, Vic 3844

Email: [kieran@gibsonaccounting.com.au](mailto:kieran@gibsonaccounting.com.au)

Kieran Olree is at the RTC every Wednesday

By appointment only - **(03) 5176 2031**

For more information and all the latest tax  
updates and handy hints for tax time,  
please visit Gibson's website:

**[www.gibsonaccounting.com.au](http://www.gibsonaccounting.com.au)**



## South Gippsland Community Grants – Round One Awarded

South Gippsland Shire Council would like to congratulate the successful applicants from Round One of the 2021/22 Community Grants Program.

Thirteen applicants were successful in receiving funding for their projects with \$76,886 awarded across four separate categories.

The Community Grants Program aims to support community initiatives, projects and events that support the South Gippsland region. Community Grants are accessible by community, volunteer and not-for-profit organisations.

Round Two of the program opens on Friday 20 August and closes Wednesday 20 October.

### **Quote attributable to South Gippsland Shire Council Chair Administrator, Julie Eisenbise:**

“Congratulations to all of this year’s round one grant recipients and thank you to everyone who took the time to prepare and submit an application. Community Grants support a wide variety of local groups and associations in South Gippsland which is evidenced by the list of successful applicants. Funding in this round has been provided to football/netball clubs, Landcare, a Scout Group, a community garden and a historical society... to name just a few. It is pleasing to see how many groups have been supported and the range of projects that will soon be facilitated.”

### **Round One Grant Recipients**

<b>Applicant</b>	<b>Project Title</b>	<b>Total Amount Allocated</b>
Sandy Point Community Power Inc	Energy Storage Battery for Sandy Point Community Centre	\$5000
Scots' Pioneer Church Ltd	Scots' Pioneer Church Mardan Preservation Project	\$10,000
South Gippsland Landcare Network	Weed Control South Gippsland: Your backyard, our backyard	\$10,000
Manna Community Garden	Renewal	\$1,375
Korumburra Bena Football Netball Club Inc	Netball Coaches Boxes	\$5,000
Walter J Tuck Reserve Committee	Bottom Oval Automatic Irrigation	\$10,000
Tarwin Lower & District Community Health Centre Inc.	Heart Beat	\$1,174
Sandy Point Community Group Inc	Sandy Point Information Boards	\$4,840
Poowong Historical Group	Pioneer Chapel Refurbishment	\$1,920
Carinya Lodge	Carinya Murals	\$8,702
Toora Recreation Reserve Committee of Management	W Cook Pavilion roof upgrade	\$10,000
Leongatha Football Netball Club	Game Day Equipment	\$4,125
2nd Leongatha Scout Group	Venue security and storage upgrades	\$4,750





**Call in to view our range of jumpers, jackets, shirts, pants and shorts available in store now.**

Different sizes and colours can be ordered in  
**14 Main St Welshpool or phone 56881051**



### **RTC Room for Hire**

Office Hire : \$11 per hour  
\$33 per day



**The Welshpool Agency hours remain as  
Monday to Friday 10am to 3pm**



### **POSITION AVAILABLE**

The Welshpool & District Advisory Group has a position available at the Rural Transaction Centre for a person who is community minded and a team player.

The successful applicant must have cash handling skills, with MYOB and banking experience preferred but not essential.

The position is for one day a week with the possibility of extending in the future.

Please provide a copy of a resume and references to the RTC on Tuesday or Thursday between 10am and 3pm.

## **Somewhere to come home to**

Bendigo Bank's Complete Home Loan offers all the features you expect from a great home loan, and some you don't.

Like super-competitive rates, free redraw and a 100% offset account on fixed and variable rate home loans.

**Come home to a better home loan. Search Bendigo Bank home loans.**

 Welshpool Agency · 5688 1051



## Welshpool Op Shop & Nursery

Monday to Friday  
10am – 4pm  
Saturday 10am – 2pm  
PH: 0474 591 014



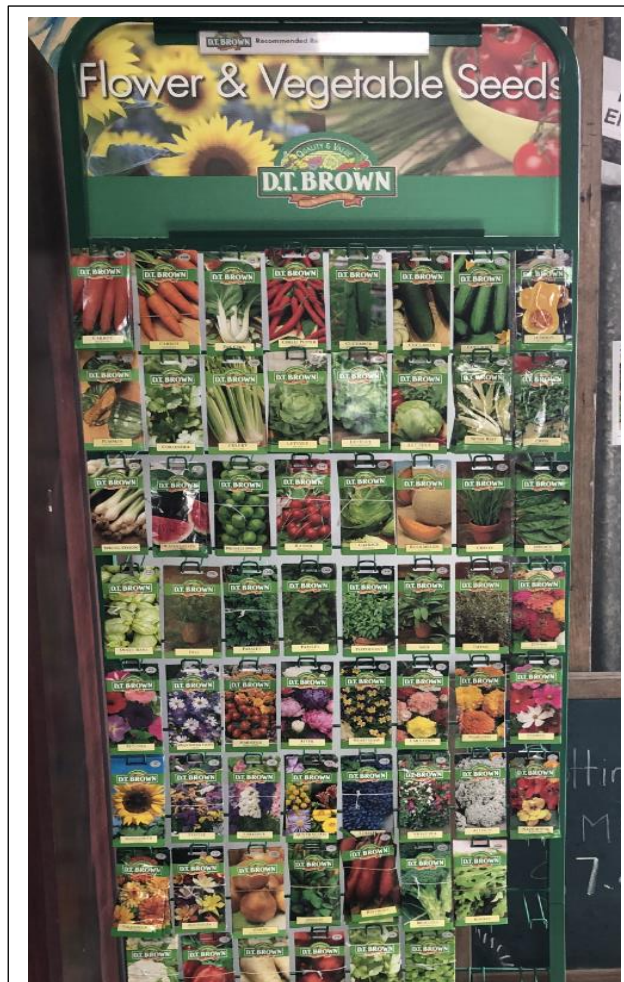
The Welshpool Op Shop is looking for Volunteers  
Please enquire at the Rural Transaction Centre



Available at the Welshpool Op Shop  
At the RTC during lockdown periods

— FARM —  
**FRESH**  
  
★ **EGGS** ★  
\$6 Dozen

New stock has arrived just in time for the Spring planting season. At only \$2 a packet you can grow your own assortment of flowers and vegetables. Call in and see what we have on offer.



What an amazing assortment of handbags we have at the Op Shop, ranging from \$3 to \$8 we are sure to have something to suit your style and needs.





## Prom Coast Soccer Club

Like most sports, soccer has been hit again by the covid lockdowns.

But our little club at Prom Coast has survived thanks to our wonderful President Shellie and the rest of our committee.



The U/12s with Casey coaching this group, has continued to improve and , while yet to win a game, has pushed all sides, and has scored plenty of goals themselves.

The women's side has been hardest hit with covid, missing many games, and when lockdown wasn't on, seemed to have a bye!

The women continued to train hard and got their reward, winning several games, including a 5 nil thrashing of highly rated Inverloch.

We all hope next year sees things getting closer to a normal season.

A massive Thank You to the Port Welshpool Working Group for their recent donation to our soccer club. The funds will be used for the renewal of training and game day equipment.



Open Thursday to Monday 10 - 4  
Phone 0400 110 318

the **Olive Branch**

35 Main Street  
Welshpool  
Prom Country

**STEP BACK IN TIME - 1890's to 1970's**  
**WHAT A GREAT DELIGHT !!**



Drinks and Snacks.  
Coffee and Cake



Find us on  
**Facebook**



Retro, Collectables and Bric a brac  
We Buy and Sell

Presenting  
local products  
Honey, Jams,  
Gift Ideas etc.  
Fresh Produce  
when  
available



## Welshpool Supermarket & Cafe

OPEN 6 DAYS A WEEK

Monday to Saturday: 9am-4pm

Sunday: Closed

Ph. 03 5688 1452



Spend a minimum of \$20 in one transaction at the Welshpool Supermarket & Café to go in the weekly draw of a \$50 fresh produce box.

Drawn every Saturday evening.

Produce boxes are also available to purchase with free delivery for those on the Welshpool postal run. Contact us for more information or to place your order.



### JOIN OUR JOINT PICTURE PRODUCTS PROJECT!

Turn your child's treasured memories into durable, high-quality melamine Pictureplates that will last a lifetime. Both decorative and useful, Pictureplates are simply beautiful. Children love eating off their very own Pictureplates, and as the years go by and they grow up and have their own families, their Pictureplates will bring back memories of those happy childhood years.

For a functional keepsake, a melamine Pictureclock or MDF Small Clock can be mounted on the wall to keep your child's precious artworks permanently on display. We are also offering a range of other products decorated with your child's artwork, such as plastic or ceramic mugs, water bottles and calendars.

Your child can use photos, markers, hand and footprints and paints to create their artworks, and you can order as many copies of your products as you'd like, so it's a fantastic gift idea for grandparents and family members. What will your child draw?

#### HOW TO GET INVOLVED WITH CURRENT COVID RESTRICTIONS IN PLACE

We'd love for you to join in this exciting and creative activity. Just choose which products you'd like to order, and how many of each product you would like. Contact Tracey on 0417 048 710 or Lisa on 0409 179 235 to arrange a pick up time of your templates from Welshpool Outdoors. Then complete your artwork and drop off at Welshpool Outdoors with your order form and cash or transfer receipt in an envelope marked 'Pictureproducts' with your family name on it.

#### Schedule and Price List

- ORDER FORMS AND PAYMENT ARE DUE BEFORE THE 10/09/2021.
- You can choose to use texta's (new ones work best) photos or paint.
- We expect to be handing out the finished products in Term 4.

NAME :

PHONE:

ITEM	PRICE PER ITEM	QUANTITY	TOTAL
PICTUREPLATE	\$28		
SMALL CLOCK - 20CM	\$28		
WATER BOTTLE - 600ML	\$28		
PICTURE CLOCK	\$32		
CERAMIC MUG	\$22		
PLASTIC MUG	\$22		
WATER BOTTLE - 400ML	\$22		
CALENDAR	\$18		
TOTAL			\$

BANK DETAILS - WDPS

BSB - 633000

ACCT NO. 156869083

REFERENCE - PICTURE PRODUCTS/SURNAME





**E.W. & H.P. FOWLER  
WELSHPOOL OUTDOORS &  
ORIGIN GAS SUPPLIES**

**19 MAIN STREET  
WELSHPOOL VIC 3966  
PH: 0356881304  
EMAIL: welshpooloutdoors@bigpond.com**

**FREE!**  
**45L ICEBOX AND  
BUCKET HAT\***

\*Offer available 01/09/2021 - 31/01/2022 on the following Husqvarna models:  
TRACTORS: TS242TXD, TS248TXD, TS354, TC242TX,  
ZERO TURN MOWERS: Z242E, Z242F, Z248F, Z254F.  
While stocks last at participating Husqvarna Dealers only.



**L TS242TXD**

*Kawasaki FR Series V-Twin - 21.5hp - 42" Cutting Width*  
Ideal for regular use in medium-sized to large gardens. It is characterized by the 107cm wide ClearCut™ cutting deck, the intelligent, user-friendly design and the simple starting process by turning the key.

**\$6,719** RRP



**FREE!  
ICEBOX AND  
BUCKET  
HAT\***

**L TS248TXD**

*Kawasaki FR Series V-Twin - 23.0hp - 48" Cutting Width*  
A powerful and comfortable side discharge tractor with sturdy ClearCut™ deck for medium to large-sized gardens. Hydrostatic with automatic transmission for easy, trouble-free operation that gives superior traction in slippery conditions and slopes.

**\$7,245** RRP



**FREE!  
ICEBOX AND  
BUCKET  
HAT\***

**Port Welshpool Working Group**

The Old Ferry Terminal at Port Welshpool now have a new AED defibrillator installed at the main entrance of the building.

The Port Welshpool Working Group would like to thank the South Gippsland Shire Council for their support with a grant from the Small Grants Program.

Pictured left is Alma Mattingley, Secretary with Cheryl Sucking, Treasurer.



**Port Welshpool Working Group  
Market**

**Sunday 26<sup>th</sup> September**

**9am – 2pm**

**Old Ferry Terminal  
Port Welshpool**

**Covid rules apply**





## WELSHPOOL POST OFFICE

20 Main Street Welshpool Phone: 5688 1419

Email: [welshpoolpostal@bigpond.com](mailto:welshpoolpostal@bigpond.com)

**Don't Forget Fathers Day Sunday 5<sup>th</sup> September**



*We will be open **Saturday 4<sup>th</sup> September, 9am til 2pm** for last minute parcel pick up and shopping.*

Check out the latest Australia Post Catalogue for gift ideas, or on line via the Welshpool Post Office Facebook page.

Gift & Fathers Day Cards available, as well as Gift Wrapping on the day.

*Christmas Stock is starting to arrive now.... plan ahead to avoid dissapointment !!!.*



Find us on  
**Facebook**

# Port Welshpool and District Maritime Museum

As we go about our daily routine of life, we watch with great interest Port Welshpool develop into another phase of its life. With the Long Jetty being rebuilt, houses that were once fishing family homes, now becoming homes for new residents. All this many, many years after this article I have featured was put to print. Thanks to the archives, we are able to get an insight in to Port Welshpool's fishing industry and how it was thought of during its development and the importance of its connection with Melbourne along with neighbouring ports. Many of us will remember in later years after this development when the many boats that called Port Welshpool home were two and three abreast at the fishermen's jetty and road transports could be seen backing down the jetty to load the valuable catch under the watchful eye of the boats' crew as it was loaded for the Melbourne fish market.

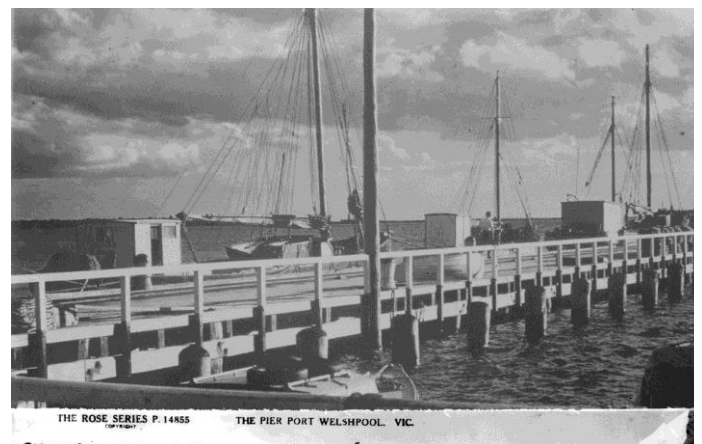
The following article was featured in the Melbourne Argus Thursday 29<sup>th</sup> August 1929 under the heading of;

## **PROPOSED TRAWLING CENTRE.**

Stabilising City Fish Supply.

The proposed development of Port Welshpool, on the coast to the east off Wilson's Promontory, as a trawling port is expected by the markets committee of the City Council to solve the difficulty of erratic arrivals of catches of trawled fish at Melbourne. This has been the chief difficulty connected with the recent development of the trawled fish industry in Victoria. Erratic arrivals have been due mainly to the difficulty of rounding Wilson's Promontory in rough weather, and on several occasions small trawlers have had to abandon the attempts to reach Melbourne and boat back to Sydney to sell their catch.

Welshpool is already an important fishing centre and is the largest of three similar ports which work the rich grounds of Corner Inlet. Port Franklin, Port Albert and Port Welshpool all supply the Melbourne market with large quantities of flathead, schnapper, flounder, garfish and whiting, which are always in the inlet as well as a few migratory fish such as mullet and salmon trout, which appear occasionally. According to the chief inspector of Fisheries and Games[Mr. Lewis] the fisheries in the comparatively shallow waters of the inlet have been fully developed and are not capable of great extension, but the addition of deep sea trawling will increase the economic importance of Port Welshpool and incidentally of the surrounding villages. A special fish service is already supplied on the South Gippsland railway line to cater for this traffic, and if trawled fish are added to the present consignments it is expected that the service will be extended. Under these conditions a regular and plentiful supply of fish will, it is believed, be available for the Melbourne market. Members of the markets committee will visit Port Welshpool in the weekend to investigate fully the possibility of the port in the relation to Melbourne requirements.





## 5 – Ingredient bacon and egg quiches



- 6 rashers streaky bacon
- 100g fetta, crumbled
- 4 Coles Australian Free Range Eggs
- 1 cup (250ml) thickened cream
- 9 cherry tomatoes, halved

### Step 1

Preheat oven to 180°C. Grease 6 holes of a ½-cup (125ml) Texas muffin pan and line the bases with baking paper. Arrange 1 bacon strip around the side of each prepared hole. Divide fetta evenly among the holes.

### Step 2

Whisk the eggs and cream in a large jug until well combined. Season. Pour evenly over fetta and top with tomato.

### Step 3

Bake for 25-30 mins or until firm to touch. Set aside in the pan for 5 mins to cool before carefully turning onto a wire rack to cool completely.

## FOSTER SEAFOODS



35 Main Street, Foster  
Ph: (03) 5682 2815

With catches of Inlet fish arriving within the shop on a daily basis and our vessels returning from extended trips into Bass Strait, you can be assured that the quality is second to none.

We also have an extensive list of products with very competitive prices.

## Danny O'BRIEN MP

Member for Gippsland South

- 54B Cunninghame St, Sale VIC 3853
- 03 5144 1987
- danny.obrien@parliament.vic.gov.au
- www.dannyobrienmp.com.au

*Working for Gippsland South*

f t i /dannyobrienmp

**THE NATIONALS** for Regional Victoria



When you've already had chips and salsa, two appetizers, 3 burritos, 2 tacos and the waiter shows up and asks if you would like dessert, and you're just like.



### Bistro & Bar Meals:

Wed - Sun – 5pm-9pm  
Fri-Sun 12noon-2pm & 5pm-9pm

### Takeaway meals & drinks

Wed-Sun 5pm-9pm  
Fri-Sun 12noon-2pm & 5pm-9pm  
Call 5688 1309 to place your order  
Bar & Bottle Shop OPEN 7 Days a week

Main Street Welshpool, Vic 3966  
Contact: SHANE

Ph/Fax: (03) 56881309

## BUTTERFLY PASSENGER SERVICE

Butterfly Passenger Service is available to all South Gippsland residents who have to travel to shops or to attend medical appointments during COVID 19 restrictions.

If you don't have your own transport and need to be somewhere please call Kerry on 0411 334 236 to discuss your travel requirements and get a quote.



# CROSSWORD



## Down

1. Large bulrushes
2. Pointed arch
3. Canker sore
4. Type of whiskey
5. Anagram of "Russet"
6. Forays
7. \_\_\_\_ vera
8. Stoutest
9. S
10. China clay
11. Kidnapping
12. Conspiracy
13. Not there
18. Hangman's knot
22. Fuss
24. Poetic foot
26. Wings
28. Catapulted
29. Large luxurious car
30. Cry of pain
31. Blockhead
32. "Where the heart is"
33. Be understanding of
34. Heard before a rocket launch
37. Speaker's platform
38. Not Mama
40. As a result
41. Concealment
43. A type of curved shape
44. Secret or hidden
46. Burdened
47. \_\_\_\_\_ and groom
48. A protective covering
49. Excrete
50. Food thickener
51. An abandoned calf
53. Sea eagle
56. Type of snake
57. 54 in Roman numerals

## Across

1. See the sights
5. Delete
10. 11th Hebrew letter
14. Not pretty
15. Preserves
16. Adept
17. Lacking moral discipline
19. Smell
20. Night before
21. Law and \_\_\_\_\_
22. A high-pitched woodwind
23. Not frivolous
25. A gold coin of ancient Persia
27. Donkey
28. Wordlessly
31. Motif
34. Shoe stud
35. 3 in Roman numerals
36. Uterus
37. Drench
38. Ceremonial splendor
39. Evil spirit
40. Razz
41. Small boat
42. Instructing
44. Policeman
45. Believe in
46. Adorable
50. Hurts
52. Deafen
54. 18-wheeler
55. Acquire
56. Delimitation
58. Axlike tool
59. Proprietor
60. Midmonth date
61. Bobbin
62. About
63. Green



## LAST MONTHS CROSSWORD RESULT

Sponsored by: **Welshpool Supermarket**

Entries must be received before

15<sup>th</sup> September, 2021

All correct entries will be put into a hat and the winner will be drawn by Supermarket staff. No correspondence will be entered into etc.

Please remember to double-check your spelling.

**Remember to include your name, contact number and date on your returned entry, Thank you.**

**Winner of the July Crossword:**



Sorry we forgot to save last month's result



## Community Group Listing

**\*Welshpool & District Advisory Group** – Contact: Linda Razinger 03 5688 1051

**\*Welshpool Fire Brigade** – training every Thursday night 7.30pm

**\*Welshpool Recreation Reserve** – Contact: Madelaine Mason 0409 976 211

**\*Welshpool Basketball Association** – Contact: Madelaine Mason 0409 976 211

**\*Prom Coast Soccer Club** – <http://www.promcoastsoccerclub.com.au/>  
Contact: Shellie Cashmore 0419 322 384

**\*Welshpool Memorial Hall** – Contact: Alan O'Neill 5688 1419

**\*Friends of Agnes Falls** – <https://www.facebook.com/FriendsOfAgnesFalls/>

**\*Port Welshpool Fishing Club** – Contact: Jenny Horner 0428 862 028

**\*Port Welshpool Working Group** – Contact: Alma Mattingley 0427 310 599

**\*Welshpool & District Playgroup** – <https://www.facebook.com/WelshpoolPlaygroup/>

**\*Welshpool & District Horticultural Society** – meeting every 2<sup>nd</sup> Wednesday of the month.  
Contact: Tom Reakes Ph. 0429966002

**\*Port Welshpool & District Maritime Museum** – Email: [pwmuseum@gmail.com](mailto:pwmuseum@gmail.com)

**\*Port Welshpool Coast Guard** – Contact: Peter Carrolan 0417 372 059



The hot pink BreastScreen Victoria van will be in Foster from the 23<sup>rd</sup> August to 24<sup>th</sup> September.

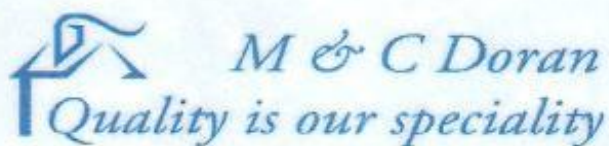
We invite women ages 50 – 74 to have a breast screen every two years, as they are the group most at risk of developing breast cancer.

Breast screening is free, takes 10 minutes, and is with a woman.

Bookings are essential and can be made online at [breastscreen.org.au](http://breastscreen.org.au) or by calling 13 20 50.



## LOCAL SERVICES.....



**Michael Doran**  
Qualified Carpenter & Joiner

16 Turnbull Street Ph. 03 5688 1229  
Port Welshpool VIC 3965 Mb. 0429 038 409  
Email: buildingservices@mcdoran.com.au Fax. 03 5688 1377



**John Hoy**  
Trade qualified Farrier  
(25 years experience)

0447 229 390

**Lawn mowing & Maintenance, Rubish removal, Painting  
Window cleaning, Gutters cleaned, High presure washer**

**Lawn mowing & Maintenance**

Free Quotes reasonable rates local tradesman



Dave Mcleish  
Port Welshpool

**0417 538 683**

davemcleish@live.com.au



**AAC MOBILE AUTO AIR  
CONDITIONING**

*Maintenance & Repairs to...*

**TRUCKS \* TRACTORS \* MACHINERY \* PASSENGER & FOOD TRANSPORT VEHICLES**

Ian Dubignon **M. 0448 761 642**

**KERRY McNARN**

Civil Celebrant

Toora  
Mob: 0402 100 651



**Celebrating life from beginning to end**



**ALBERTON TIMBER  
& TREATMENT PLANT P/L**

FOR ALL YOUR TREATED PINE NEEDS

POSTS SAWN TIMBER DECKING CUSTOM TREATING

SLEEPERS NUTS AND BOLTS PALINGS AND MORE

SOUTH GIPPSLAND HIGHWAY, ALBERTON, VIC, 3971

Ph (03) 5183 2437

Fax (03) 5183 2659

Email sales@albertontimber.com.au

**CONCRETER**



**SOUTH GIPPSLAND CONCRETE  
ALL THINGS CONCRETE  
ON-SITE TIMBER MILLING**

**0400 840 729**

**WWW.SGCONCRETE.COM.AU**

**TV & DATA SYSTEMS**

Digital Antennas, TV wall mounts, Data &  
Computer outlets, Home Theatre, Hidden  
Wiring, Networks, Offices, CCTV, Repairs,  
Equipment Installations

**Licensed Cable Installer**

Domestic, Commerical & Industrial

**Steve Mooney 0427 257 222**

**SOUTH GIPPSLAND  
SEPTIC TANK CLEANING**

**Also Portable Toilets Hire**

**Call Chris Whittle**

**(03) 5688 1572**



**Kirwan Builders**

**TK Construction**

*"for all your building needs"*

TK Construction - Michael Kirwan

6565 South Gippsland Highway HEDLEY VIC 3967

P: 03 5184 1223 | M: 0428 911 900

E: kirwanbuilders@gmail.com

HIA MEMBERSHIP: 813 711 | DB-U: 20399 | A.B.N: 40 896 158 242



Whatever  
makes your soul  
happy.

do that.



Foster Golf Club  
7 Reserve Street  
Foster Victoria  
3960

19 Chantelle Peters (03)5682 2272  
golfclub19@outlook.com.au

### ANTHONY BRAVINGTON

#### Cleaning & Property Maintenance Contractor

- Commercial Cleaning, Domestic Cleaning and all types of Property Maintenance
- Accommodation Contracts
- Office Building Contracts
- Retail Shops Contracts
- School Cleaning Contracts
- Builders Cleans
- All Property Maintenance etc
- Window Cleaning
- Carpet Steam Cleaning

#### THURSDAYS & FRIDAYS ONLY

1 bedroom house	\$70
2 bedroom house	\$90
3 bedroom house	\$120
4 bedroom house	\$150

Call Anthony for all your cleaning needs

**Mobile: 0418 146 986**

**Email:** anthonybravington@bigpond.com



**J.J.Richards**  
& Sons

#### WASTE DISPOSAL

- Permanent bins & clean up skips
  - Commercial, household or farm waste
    - Cardboard recycling
  - Weekly, fortnightly, monthly
    - 1.5M3 OR 3M3 BINS
  - Locally owned & operated
- CALL OR EMAIL FOR A QUOTE

PH: 03 9794 5722

[www.jjswaste.com.au](http://www.jjswaste.com.au)

[operations.melbourne@jjswaste.com.au](mailto:operations.melbourne@jjswaste.com.au)

*"Your local name  
in the waste game"*

**KERRY McNARN**

Pet Reiki

Toora  
Mob: 0402 100 651



**after all they're only human!**



# Friendship

E L S H A R E Z B E B Y B J S G L I S T E N M F  
 K E C M Z E P I M O H Q B F X F S G Z E Z K M G  
 K O B K G E P R O T E C T I V E R K J T U L M E  
 M D E P E N D A B L E A P R I J V B L F Z G J N  
 C A U A Z N L F C N L T L W S M I L E A G T W E  
 E C A C A R I N G A F I A T N M P M T L Q R Z R  
 Q C Q N F A X Z X D J E Y L K H X K H W I U B O  
 J E N K R H A P P Y F U S E L F L E S S X S V U  
 S P O M I G I V I N G R O M L M D U N C B T B S  
 M T H W E L O V I N G H O N E S T N W L B W W K  
 I I V P N C O O P E R A T I O N J I I N H O W Q  
 N N K G D D I R G P T P A B Y Z R Q K T S R N U  
 I G I L L J E D L B Z T R C N J E U G M I T H N  
 C M N Q Y A D H I H U G D D I D S E F O M H C Z  
 E E D E N C O U R A G I N G L B P G Z K I Y O B  
 L V I C B W L T W R L T H E L P E F U Z L P N K  
 W P F Q N S H V H R S X U E Q D C Y O C A E S Y  
 Z A F Y C T H O U G H T F U L D T K U T R K I Z  
 M C E Y S S G Y Y A H I W F I P F G A I B P D G  
 Y F R E B V S W G T I O Q A K P U N L A U E L  
 L X E H T K Z F H P V N J I L S L A S U K E R O  
 B S N M K O O M S U P P O R T I V E Q C W V A Y  
 X Z T J L A U G H S K O S E N S I T I V E T T A  
 R P O S I T I V E W H E Q L V Z N Z U B N X E L

unique	happy	dependable	similar
different	positive	cooperation	sensitive
supportive	selfless	giving	considerate
listen	encouraging	accepting	loyal
protective	loving	generous	thoughtful
fair	respectful	honest	trustworthy
caring	laugh	smile	hug
play	help	share	nice
kind	friendly		



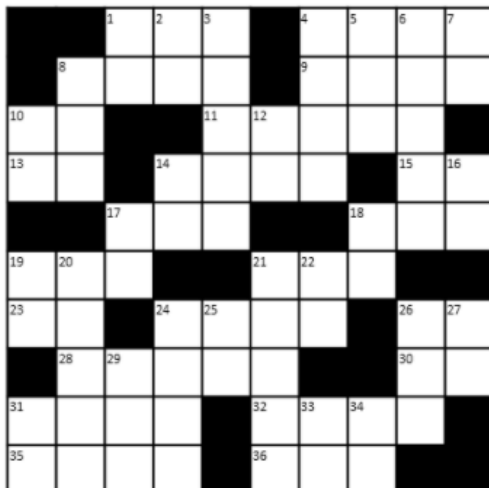
## HOW MANY WORDS?

How many words of four or more letters can you make from the letters below? Every word must contain the letter in the center. You should make at least one word using all 7 letters.



### RESULTS:

Average - 6 or more words  
 Good - 7 or more words  
 Outstanding - 9 or more words



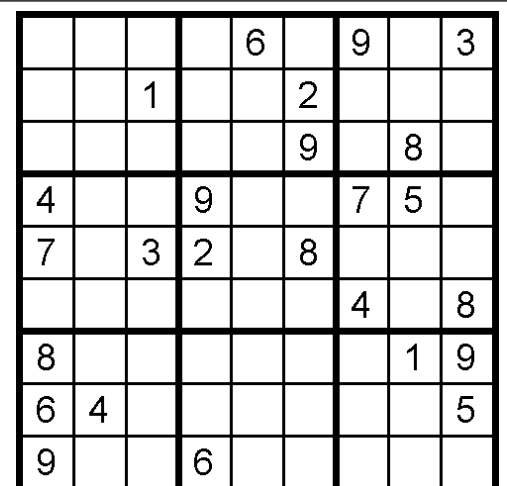
© puzzletoprint.com

### ACROSS

1. 1408 - 427
4. 1627 + 6068
8. 601 + 3466
9. 6046 - 2918
10. 9 + 18
11. 84863 - 2084
13. 24 + 21
14. 2109 + 7810
15. 58 - 4
17. 420 - 105
18. 40 + 946
19. 219 + 501
21. 499 - 15
23. 2 + 37
24. 401 + 2294
26. 28 + 53
28. 23833 - 11720
30. 62 - 5
31. 328 + 1133
32. 10074 - 261
35. 2826 + 3220
36. 142 + 442

### DOWN

1. 172 - 82
2. 115 - 29
3. 27929 - 10034
4. 4734 + 2645
5. 138 + 479
6. 90348 + 2610
7. 105 - 47
8. 779 - 304
10. 1 + 23
12. 2 + 19
14. 20 + 71
16. 9 + 37
17. 20 + 10
18. 167 - 73
19. 1 + 72
20. 25695 + 3445
21. 70644 - 21249
22. 21 + 64
24. 1300 + 816
25. 110 - 49
26. 1207 - 354
27. 1 + 16
29. 54 + 210
31. 1 + 15
33. 50 + 38
34. 5 + 9



## EVER FEEL LIKE YOU FORGOT TO DO SOMETHING IMPORTANT?

