

In Commemoration of the end of World War II

August 15, 2020 marked the 75th anniversary of Victory in the Pacific (also known as VP Day), an annual commemorative event that celebrates the end of WWII. In Victoria, this significant anniversary was commemorated in an online presentation organised by RSL Victoria.

The VP Day presentation followed a similar format to the ANZAC Day 2020 Dawn Service and was broadcast on RSL Victoria's Facebook page from 11:20 am to midday on August 15.

RSL Victoria's VP Day commemorative presentation featured:

- A focus on the 75th anniversary of the end of WWII;
- A focus on acknowledging and thanking WWII veterans;
- A formal address from Minister for Veterans, The Honourable Shaun Leane MP
- RSL Victoria State President, Dr Robert Webster OAM, to recite the Ode.
- A formal address from Her Excellency, the Governor of Victoria, the Honourable Linda Dessau AC;

RSL Victoria State President, Dr Robert Webster OAM, said "On August 15, 2020 Australia will commemorate the 75th anniversary of the end of WWII. In Victoria, due to COVID-19 restrictions, this occasion won't be marked with the traditional service at the Melbourne Shrine of Remembrance. There will be no gatherings at local War Memorials or RSL Sub-Branches, and for many of us, we will mark the occasion alone, but united by the ANZAC Spirit and our solemn commitment to remembrance."

RSL Victoria's VP Day Presentation is supported by the Victorian Government to recognise the 75th anniversary of the end of World War II.

To commemorate the 75th Anniversary of Victory in the Pacific, Australian National Flags were placed at the graves of those who served their country at the Welshpool, Toora and Foster Cemeteries.

This project was initiated by the Foster Historical Society and underwritten financially by the Foster RSL Sub Branch. Many thanks to all those that helped out.

Lest We Forget



Disclaimer

This newsletter is an independent self-funded publication produced by staff and volunteers of the RTC and it does not reflect the opinions of the Committee members, South Gippsland Shire, or the Department of Planning and Community Development.



TRADING HOURS

MON - FRI

10.00AM - 3.00PM

- WELSHPOOL COMMUNITY LIBRARY
- BENDIGO BANK AGENCY
- CENTRELINK AGENCY
- V/LINE TICKETING OFFICE
- ROOM HIRE AVAILABLE
- PASSPORT APPLICATIONS
- COPY & PRINT SERVICES

Other services by appointment only

- Diabetes Clinic – 5683 9780
- Gibson Accounting – 5176 2031
- Royal Flying Doctors – 03 8412 0480
- Massage – 0427 881 398



Centrelink Website

The Centrelink website (www.centrelink.gov.au) has been incorporated into the Department of Human Services website humanservices.gov.au. The new site is a convenient, single entry point for health, social and welfare payments and services.

Any questions regarding your payments or entitlements, this would be your first port of call.

- ***You are able to register online and access details of your account.***
- ***Find out the latest information regarding services.***
- ***Calculations can be done to work out family assistance.***
- ***Access forms and brochures.***

A touch screen computer is available at the Welshpool Rural Transaction Centre for your use.

Staff at the Centrelink agency are able to assist you with registration etc.



VLIN BUS SERVICES

**Purchase tickets at the
Rural Transaction Centre or
collect a VLINE Bus Timetable**

DIABETES CLINIC

If you would like an appointment
or have any queries, please contact

Karen on 03 5683 9780



Gibson Accounting

Kieran Olree

PH: (03) 5176 2031

Fax: (03) 5174 6313

101 Hotham Street
Traralgon, Vic 3844

Email: kieran@gibsonaccounting.com.au

Kieran Olree is at the RTC every Wednesday

By appointment only - **(03) 5176 2031**

For more information and all the latest tax
updates and handy hints for tax time,
please visit Gibson's website:

www.gibsonaccounting.com.au

Welshpool RTC

Please note below the temporary change to the banking hours at the Welshpool Agency. The RTC will remain open Monday to Friday 10am to 3pm for all other services including Centrelink and we look forward to returning to our usual banking hours after this temporary change.

Temporary change of hours: Welshpool Agency

The well-being of our customers, staff and communities is our highest priority during COVID-19.

Open: Monday - Thursday, 10am - 3pm

Closed:

Friday 14th August

Friday 21st August

Open: Monday - Wednesday, 10am - 3pm

Closed:

Thursday 27th & Friday 28th August

Thursday 3rd & Friday 4th September

Thursday 10th & Friday 11th September

Thank you for your understanding and support.

 **Bendigo Bank**

Bendigo and Adelaide Bank Limited ABN 11 060 049 178, AFSL/Australian Credit Licence 237879 A1390563, OUT_1357566, 07/07/2020

TEMPORARY CHANGES AT TOORA COMMUNITY BENDIGO BANK BRANCH

As an essential service during this Covid-19 pandemic environment, the Board and Management are committed to keeping our Community Bendigo Bank Team safe whilst providing an excellent ongoing banking service to our community.

Following a Bendigo Bank directive, the Board have divided our staff into two separate working groups (Toora and Foster) to ensure continuity of service.

To facilitate this, like with the last stage three lockdown, we will be temporarily closing the Toora Branch on a Friday, starting Friday 14th August. In addition to this, our Toora Branch will also be closed Thursday 27th August, 3rd September and 10th September due to a temporary staffing shortfall. As mentioned above, sharing staff between branches is no longer an option.

The Welshpool Agency is linked to our Toora Branch and subsequently will mirror Toora's hours. The hours at the Foster Branch will remain unchanged remaining open 5 days during this period for clients requiring a face to face service. The Board do not take the closure of our branches lightly and will review periodically in light of the ongoing situation.

As always, you can do your banking online or over the phone and when coming into a Branch please ensure you have a face covering on (as per the government's advice), use the provided sanitiser station on entry and allow 1.5mtrs between others at all times.

A full range of Bendigo Bank's products and services are available through our Branches and we are committed to continuing our excellent customer service for our community.

We thank you for your patience as we navigate our way through the effects of Covid-19.

Making good things happen

When you bank with us, profits pour into the community. \$1,328,043 so far.

A bank giving back sounds unusual. For us, it's business as usual.

Find out more. Call us on 03 5688 1051 or search Bendigo Bank Welshpool Agency.



 **Bendigo Bank**

Community Bank
Toora, Foster and Welshpool

Bendigo and Adelaide Bank Limited ABN 11 060 049 178, AFSL/Australian Credit Licence 237879 A1390563, OUT_1357566, 07/07/2020

WELSHPOOL RTC



20% off all floor stock

August / September

**A variety of shirts, jumpers,
jackets, pants and shorts
available in store now**

Hi Vis and Casual wear

Call in or phone 56881051



Looking for a gift for a loved one but can't get to the shops? Or even a treat for yourself!

The RTC have a variety of locally made Macramé Plant Hangers for sale. They can be purchased with or without the pot making posting easy for that special someone who you may not currently be able to visit.

The Plant Hangers range in price from \$10 to \$30.

We also have some beautiful 'chain of hearts' and 'string of pearls' plants available for sale.

Open Monday to Friday 10am to 3pm



John Arthur Elliott – “The Camel Man”

Two years ago John left his home and successful life in Perth to head to Toowoomba, Queensland to buy some camels and start his adventure. “Hard to imagine at that point what was ahead. But sometimes we need to take a leap of faith”.

With his aim to travel the southern-most camel team on the Australian continent, John set off on a very different paced lifestyle to what he was accustomed to. “What started as a crazy idea over dinner has taken my life in a whole new direction. Fast paced has been replaced. I now see the world at 4kms an hour”.

Travelling through our beautiful country John has had the opportunity to see and hear the stories of many along the way. “The interaction and support with the local communities I have passed through is what’s making this the most amazing journey”.

Earlier this month John and his troupe of camels, Charlie, Ted, Jackson, Arthur and Bill, along with his trusty rescue dog Bruski called Welshpool home for a few days at the Recreation Reserve. While here the camels enjoyed some rest whilst getting to meet many locals calling in to meet John and his trusty crew.

From Welshpool John will continue on his way heading towards Melbourne and hopefully, restrictions allowing, will board a ship to Tasmania. After Tasmania he will head towards Alice Springs, then head west to Coral Bay in Western Australia.

Whilst on this journey of a lifetime, John is also raising awareness about Melanoma and the early detection and removal. John is working with *Beard Season* to talk with people along the trek about getting checked.

We wish John a safe remaining journey and thank him for calling Welshpool home for a few days and putting many smiles on our locals’ faces.

If you wish to follow John’s story join him on his Facebook page, John Arthur Elliott or his website

<https://www.johnelliott.com.au/>



Welshpool and District Primary School

Congratulations on a great start to remote learning 2.0!

Over the last few weeks the P/1 class have been meeting at 9:15am on Webex on Mondays, Tuesdays, Thursdays and Fridays. All of the students have really enjoyed seeing each other and sharing their work and what they have been up to at home. Even though it is a little bit scary, it has been great to see all of the students increasingly engage in sharing during our webex times. Many of our students have been busy learning in different ways some of us have been helping our families milking, on the farm, collecting firewood, cooking, building and more.

Students in P/1 have also been busy completing some amazing work at home and which we would like to share some with you below.



Molly's pinecone creation



VJ, Lachlan and Patrick having fun fishing and playing outside



Daisy Pyke's MARC Van picture and information about worms.

****Currently closed due to restrictions****



Phone 0400 110 318

the Olive Branch

35 Main Street
Welshpool
Prom Country

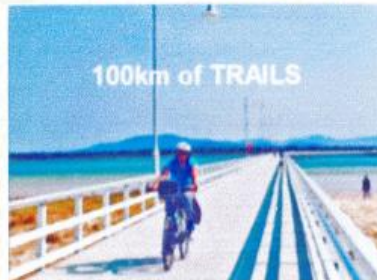
**LET'S GO RIDE A BIKE
WHAT A GREAT DELIGHT !!**



Drinks and Snacks.
Coffee and Cake



Retro, Collectables and Bric a brac
We Buy and Sell



Day Hire Available -
From 8 Yrs to Adult



 Find us on
Facebook

(IT'S NO) DRAMA PRODUCTION



HAVING A PARTY OF ONE!

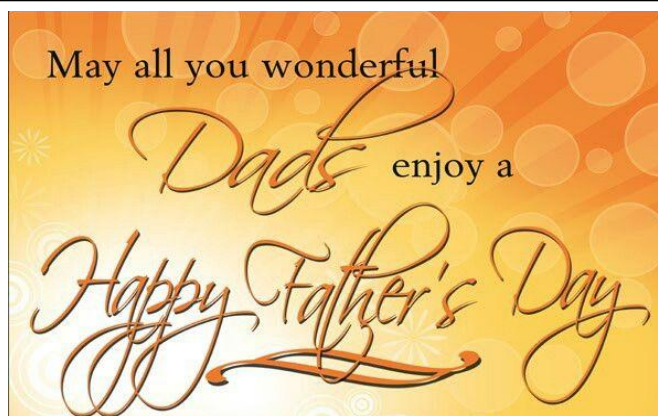
Council is a proud supporter of (it's no) drama - a physical theatre ensemble for people with and without disability living in South Gippsland. The ensemble has launched its new short film 'Party of One' which we recommend everyone gives a watch!

Party of One was developed after COVID-19 meant the ensemble was unable to proceed with its planned 2020 production. The creative team behind (it's no) drama rose to the challenge and instead of making a physical stage production for the first half of 2020, they have created a short film that depicts nine performers' experiences of lockdown.

Despite being shot and edited in isolation, the resulting three minute film feels very connected. So if you need something to make you smile today make sure you take a moment to watch below!

Click on the link below or visit www.itsnodrama.com/productions

<https://www.itsnodrama.com/productions>



**ONE
KIND
WORD**
CAN CHANGE
SOMEONE'S
ENTIRE DAY

E.W. & H.P. FOWLER WELSHPOOL OUTDOORS & ORIGIN GAS SUPPLIES

19 MAIN STREET
WELSHPOOL VIC 3966
PH: 0356881304
EMAIL: welshpooloutdoors@bigpond.com

WE'RE HERE TO STAY

**QUAD BIKE
✓ COMPLIANT
SAFETY STANDARD**

Compliant quad bikes available now that meet the Consumer Goods (Quad Bikes) Safety Standard.

3 YEAR
WARRANTY

Australian Made QBDs

- Albury (02) 6021 4392 • Ballarat (03) 5339 4200 • Carrong (02) 4076 1151 • Donald (03) 5497 1611 • Ferntree Gully (03) 9758 8000
- Hamilton (03) 5572 4327 • Kilmore (03) 5782 1616 • Lake Boga (03) 5037 2389 • Leongatha (03) 5642 4044 • Portland (03) 5523 5399
- Red Cliffs (03) 5024 3610 • Shepparton (03) 5849 1577 • Tootradin (03) 5998 3216 • Traralgon (03) 5174 1702
- Warragul (03) 5622 3875 • Warramboul (03) 5561 1700 • Welshpool (03) 5688 1304 • Whittlesea (03) 9716 2019

CFMOTO
CFMOTO.COM.AU

Distributed by Mojo Motorcycles

Welshpool Golf Club

Due to the Stage Three Restrictions being reimposed it has been very quiet at the club recently. We are unable to play any competitions until further notice but we can still play golf socially in groups of no more than 2 players (members of the same household excepted). The Clubhouse is unfortunately closed. If the restrictions are eased in early October we will endeavour to reschedule as many of our missed competitions as we can in the last few months of the year. We have also had to postpone our AGM for at least a month and will let members know the new date as soon as we can. The course is looking great, a little damp at times, but it is the middle of winter.

I hope I can have more encouraging news next time.

Richard Knowles

Captain

WGC



5 Ingredient Peanut Butter Chocolate Chip Cookies

INGREDIENTS

- ☐ 1 cup (280g) crunchy peanut butter
- ☐ 1 cup (220g) brown sugar
- ☐ 1 Coles Australian Free Range Egg
- ☐ 1 teaspoon baking powder
- ☐ 100g dark choc bits



Step 1 Preheat oven to 180C. Line 2 baking trays with baking paper.

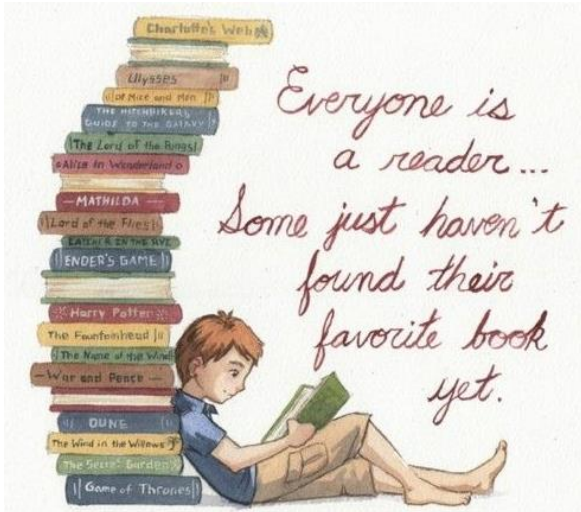
Step 2 Use an electric mixer to beat the peanut butter and sugar in a bowl until well combined. Add the egg and baking powder and beat until well combined. Add the choc bits and stir to combine.

Step 3 Roll tablespoonfuls of mixture into balls. Place on lined trays, allowing room for spreading. Flatten slightly. Bake, swapping trays halfway through cooking, for 10-12 mins or until light golden. Set aside on trays to cool.

Welshpool Op Shop & Nursery

Temporarily Closed due to
Stage 3 restrictions

PH: 0474 591 014



RTC Rooms for Hire

Office Hire : \$11 per hour
\$33 per day

Consulting Room : \$27.50 per day

Meeting Room Hire : \$38.50 per day



West Gippsland
Libraries

Located at the Welshpool RTC

Temporarily Closed



WELSHPOOL POST OFFICE

20 Main Street Welshpool Phone: 5688 1419

Email: welshpoolpostal@bigpond.com

Happy Fathers Day - Sunday September 6th

Wishing all Dads' the best for the day in these unusual times. We hope you all get spoilt !!!

May you all also have a happy and safe time in the upcoming school holidays.

Last Minute Gift Ideas in Store.

Cath, Al, Dave, and Shandi.



Find us on
Facebook



Port Welshpool & District Maritime Museum

Buildings in Port Welshpool are like a good novel, from humble beginnings to now, where some are being renovated to make way for a more modern dwelling. Along the way collecting stories with a mixture of happiness, sadness, milestones, disputes over wills and the odd divorce.

As we look back in time to remember the “good old days” and wonder where are those families now that once called these buildings home?

As a new generation looks back through photos and laugh at the fashions, snigger at the great times had and how simple life was and a tear is wiped away for those missed.

The same can be said for the boats that once called Port Welshpool home. As they were sold to the highest bidder, life moved on for the once owners and this meant for most moving away from the wind and sand flies to greener pastures, or for some to be nearer to family.

As you walk, ride or run along the walking track that edges Lewis Street you take in all that the view has to offer and in doing so you see boats travelling up and down the channel. Have you ever wondered what their story is? Have they had a great day with a nice feed to boast, or maybe stayed overnight somewhere to take in the wonders of the Prom in the hope of catching the big one. Maybe there is a boat in tow, where the owner hasn't been attentive to his pride as required and is there for all to witness, or maybe it's a boat that is new to the port taking shelter till “this blows over”.

A few weeks back, a 42ft. boat came into port on an adventure for the now owners of 10 yrs. They had spent three months sailing around Tasmania taking in the great sites and then onto South Australia for another three months, where more of this great countries coast line and ports were explored. Their next plan was the coast of N.S.W. where they headed for some warm weather, can you blame them? First they had to visit Port Welshpool as this is where they knew their boat had some history. With the museum not being open due to Covid 19, they made contact by email in hope that they could find out more about their pride and joy.

We were thrilled to learn that this boat that spent many years working from Port Welshpool, was still afloat and in great condition considering her age. She was none other than the “Singapore” that was once owned by the Ports and Harbours and her home was the Long Jetty.

Built at Port Albert by Edward Brosche in 1956, it is believed to have been a fishing boat and later she was then sold to Ports and Harbours and spent many years as a service boat. With a few owners during her life, all having great plans, and with respect for the craftsmanship, she was always in good hands.

So then the fun started to find out more about this boat, not only for the owners but also to add to the history of the Long Jetty. After a phone call to Gippsland Port we had a lines plan but still more was needed. Why was she built and for who? What was her life's story before /after she became part of ours? With a few excellent photos at the museum of her moored at the Long Jetty, we needed to find out more!

BUT then for our own health and wellbeing we were put into lock down, so.... until the restrictions are lifted and we are able to socialise, this is like the good novel- can't wait to finish it and to find out how it ends, but in this case it is part of a sequel!

If any of our readers can help with any info or have any questions on other subjects, just email the museum and we will do our best.....and hopefully in the very near future we will be open again for business.

pwmuseum@gmail.com



Welshpool
Supermarket
& Café

'Home Made Cakes'



OPEN 6 DAYS A WEEK

Monday to Friday: 9.30am-4pm

Saturday: 9am-3pm

Sunday: Closed

'Call in for a Latte'
Ph. 03 5688 1452

FRANCIE FEET

Home Visits / Mobile Foot Care

Leongatha to Yarram

Francie Feet, foot care offers trimming,
filing of toenails and light massage to
feet and lower legs

To Make an appointment

Call Fran:
(03) 5688 1615
0427 179 887

Don't wear your feet out.
Come along and treat yourself

Billy Goat SOAP for sensitive
skin available, and Gift vouchers.
A great gift for family & friends!!



FOSTER SEAFOODS



35 Main Street, Foster

Ph: (03) 5682 2815

With catches of Inlet fish arriving within the shop on a
daily basis and our vessels returning from extended trips
into Bass Strait, you can be assured that the quality is
second to none.

We also have an extensive list of products with very
competitive prices.

Danny O'BRIEN MP
Member for Gippsland South

54B Cunninghame St, Sale VIC 3853
03 5144 1987
danny.obrien@parliament.vic.gov.au
www.dannyobrienmp.com.au



A better deal

for Gippsland South

Funded from Parliamentary Budget

/dannyobrienmp



When you
have no
idea what's
going on
but you still
try to help



Bistro & Bar Meals: 4pm – 8pm

Takeaway meals & drinks

Call 5688 1209 to place your order

Main Street Welshpool, Vic 3966

Contact: **SHANE**

Ph/Fax: (03) 56881209

Email: welshpoolhotelmotel@gmail.com

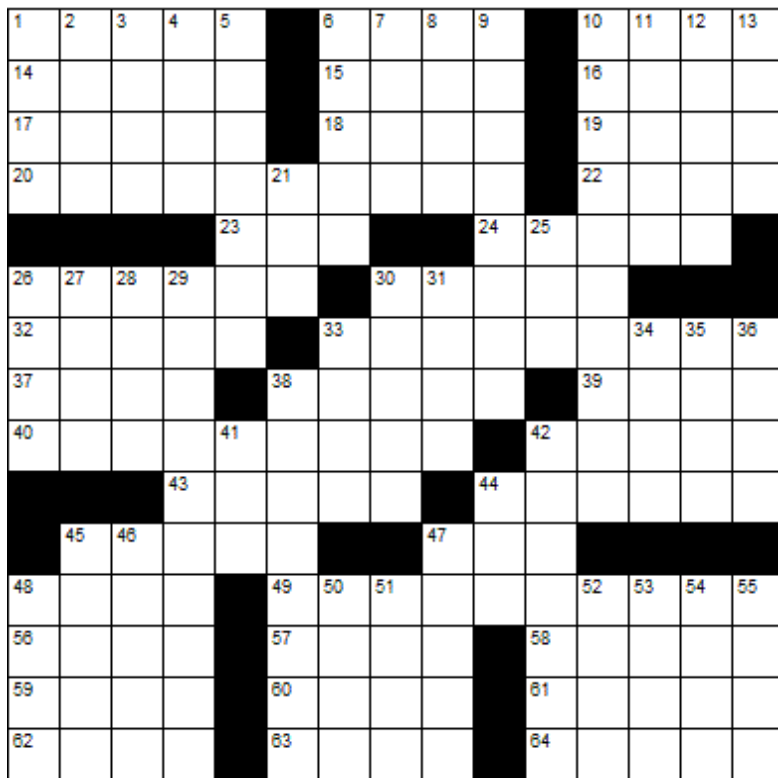
BUTTERFLY
PASSENGER SERVICE

Butterfly Passenger Service is
available to all South Gippsland
residents who have to travel to shops
or to attend medical appointments
during COVID 19 restrictions.

If you don't have your own transport
and need to be somewhere please call
Kerry on 0411 334 236 to discuss your
travel requirements and get a quote.



CROSSWORD



Down

1. Caroled
2. By mouth
3. 53 in Roman numerals
4. Green
5. Jubilation
6. Office worker
7. 66 in Roman numerals
8. Beasts of burden
9. Titillating
10. Tree-boring bird
11. Yield
12. Sticker
13. Char
21. Before, poetically
25. Biblical boat
26. Pigeon-___
27. Yucky
28. P P P P
29. In an elegant manner
30. Tapestry
31. Roman deity
33. Voucher
34. Dwarf buffalo
35. Mats of grass
36. Female sheep (plural)
38. Enthusiastic
41. Lyric poem
42. Newspaper
44. Female chicken
45. Flower part
46. A kind of macaw
47. Monetary penalties
48. Ceremonial splendor
50. No
51. Algonquian Indian
52. A soft sheepskin leather
53. Circle fragments
54. Ballet attire
55. Existence

Across

1. Figure out
6. Coagulate
10. Bankrolls
14. Disney mermaid
15. 71 in Roman numerals
16. Curved molding
17. Nigerian monetary unit
18. Not odd
19. Killer whale
20. Scintillating
22. Beloved
23. Bother
24. Continuation of the coat collar
26. Walk quietly
30. All excited
32. Large body of water
33. Engine housing
37. Anagram of "Seek"
38. Gesture of indifference
39. Be cognizant of
40. As bad as can be
42. Crystal-lined rock
43. Makes changes to
44. Pester
45. Less hazardous
47. Tasseled cap
48. South American country
49. Burn
56. Iridescent gem
57. Ripped
58. A ring-shaped surface
59. A crumbling earthy deposit
60. Type of sword
61. Sensitivities
62. Participate in games
63. D D D D
64. Follow as a result



LAST MONTHS CROSSWORD RESULT

B	O	U	T		A	L	A	R		D	O	O	R
U	L	N	A		C	A	M	E	L		U	M	B
R	I	F	F		E	V	A	D	E		R	I	O
L	O	A	F	S		E	S	C	A	L	A	T	E
					M	E	N	U		S	A	S	I
W	R	I	T	I	N	G		P	E	N	C	I	L
R	E	L	A	T	I	O	N			G	E	N	E
A	L	I			T	O	A	D	S		D	E	Y
P	I	A	N	O			B	O	O	T	L	I	C
					C	R	E	T	I	N		E	A
							M	I	N	O	R	P	I
D	E	F	E	C	A	T	E	D		G	E	T	U
A	W	E	S				N	A	I	R	A		R
D	E	L	I				E	R	N	E	S		A
A	R	T	S				Y	E	W	S		L	E

Sponsored by: **Welshpool Supermarket**

Entries must be received before

16th September, 2020

All correct entries will be put into a hat and the winner will be drawn by Supermarket staff. No correspondence will be entered into etc.

Please remember to double-check your spelling.

Remember to include your name, contact number and date on your returned entry, Thank you.

Winner of the July Crossword:

Marilyn Heggie



Community Group Listing

- *Welshpool & District Advisory Group** – Contact: Linda Razinger 03 5688 1051
- *Welshpool Fire Brigade** – training every Thursday night 7.30pm
- *Welshpool Recreation Reserve** – Contact: Madelaine Mason 0409 976 211
- *Welshpool Basketball Association** – Contact: Madelaine Mason 0409 976 211
- *Prom Coast Soccer Club** – <http://www.promcoastsoccerclub.com.au/>
Contact: Shellie Cashmore 0419 322 384
- *Welshpool Memorial Hall** – Contact: Alan O'Neill 5688 1419
- *Friends of Agnes Falls** – <https://www.facebook.com/FriendsOfAgnesFalls/>
- *Port Welshpool Fishing Club** – Contact: Vern Suckling 5688 1554
- *Port Welshpool Working Group** – Contact: Alma Mattingley 0427 310 599
- *Welshpool & District Playgroup** – <https://www.facebook.com/WelshpoolPlaygroup/>
- *Welshpool & District Horticultural Society** – meeting every 2nd Wednesday of the month.
Contact: Fran Grylls Ph. 5184 1376
- *Port Welshpool & District Maritime Museum** – Email: pwmuseum@gmail.com
Contact: Fran Grylls Ph. 5184 1376
- *Port Welshpool Coast Guard** – Contact: Peter Carrolan 0417 372 059

Welshpool Recreation Reserve

There may not be any sports currently being played at the Recreation Reserve, however there is always something going on. You will notice our new storage shed is currently being erected and the old front fence is coming down, soon to be replaced by a new, more appealing fence and entrance way.

On Tuesday 11th August we had a helicopter organised by Parks Tasmania to take gas bottles, supplied by Welshpool Outdoors, to Deal Island then return the empty bottles.

Unfortunately our Annual Lawn Mower Race Day will not be going ahead this December, but the team from AROLMRA are keen to come back again next year.

We look forward to seeing soccer, basketball and competition golf back at the Reserve as soon as restrictions allow and hope to see you all again to continue to support your local Recreation Reserve.



LOCAL SERVICES.....



Michael Doran
Qualified Carpenter & Joiner

16 Turnbull Street
Port Welshpool VIC 3965
Email: buildingservices@mcdoran.com.au
Ph. 03 5688 1229
Mb. 0429 038 409
Fax. 03 5688 1377



John Hoy
Trade qualified Farrier
(25 years experience)

0447 229 390

**Lawn mowing & Maintenance, Rubish removal, Painting
Window cleaning, Gutters cleaned, High pressure washer**

Lawn mowing & Maintenance

Free Quotes reasonable rates local tradesman



Dave Mcleish
Port Welshpool

0417 538 683

davemcleish@live.com.au



Maintenance & Repairs to...
TRUCKS * TRACTORS * MACHINERY * PASSENGER & FOOD TRANSPORT VEHICLES
Ian Dubignon **M. 0448 761 642**



Styling on Stanley
Unisex Salon

46 Stanley Street,
Toora
2962.
56862328

Liz O'Neill
Proprietor
Wednesday, Thursday, Friday 9am – 5pm
and Saturday



FOR ALL YOUR TREATED PINE NEEDS

POSTS SAWN TIMBER DECKING CUSTOM TREATING
SLEEPERS NUTS AND BOLTS PALINGS AND MORE

SOUTH GIPPSLAND HIGHWAY, ALBERTON, VIC, 3971
Ph (03) 5183 2437 Fax (03) 5183 2659 Email sales@albertontimber.com.au

CONCRETER



0400 840 729

WWW.SGCONCRETE.COM.AU

TV & DATA SYSTEMS

Digital Antennas, TV wall mounts, Data & Computer outlets, Home Theatre, Hidden Wiring, Networks, Offices, CCTV, Repairs, Equipment Installations

Licensed Cable Installer

Domestic, Commerical & Industrial
Steve Mooney 0427 257 222

SOUTH GIPPSLAND SEPTIC TANK CLEANING

Also Portable Toilets Hire

Call Chris Whittle

(03) 5688 1572



Kirwan Builders

TK Construction

"for all your building needs"

TK Construction – Michael Kirwan
6565 South Gippsland Highway HEDLEY VIC 3967
P: 03 5184 1223 | M: 0428 911 900
E: kirwanbuilders@gmail.com

HIA MEMBERSHIP: 813 711 | DB-U: 20399 | A.B.N: 40 896 158 242

ANTHONY BRAVINGTON

Cleaning & Property Maintenance Contractor

- Commercial Cleaning, Domestic Cleaning and all types of Property Maintenance
- Accommodation Contracts
- Office Building Contracts
- Retail Shops Contracts
- School Cleaning Contracts
- Builders Cleans
- All Property Maintenance etc
- Window Cleaning
- Carpet Steam Cleaning

THURSDAYS & FRIDAYS ONLY

1 bedroom house	\$70
2 bedroom house	\$90
3 bedroom house	\$120
4 bedroom house	\$150

Call Anthony for all your cleaning needs

Mobile: 0418 146 986

Email: anthonybravington@bigpond.com



WASTE DISPOSAL

- Permanent bins & clean up skips
 - Commercial, household or farm waste
 - Cardboard recycling
 - Weekly, fortnightly, monthly
 - 1.5M3 OR 3M3 BINS
 - Locally owned & operated
- CALL OR EMAIL FOR A QUOTE

PH: 03 9794 5722

www.jjswaste.com.au

operations.melbourne@jjswaste.com.au

*"Your local name
in the waste game"*



WeighLess With Julie Ray

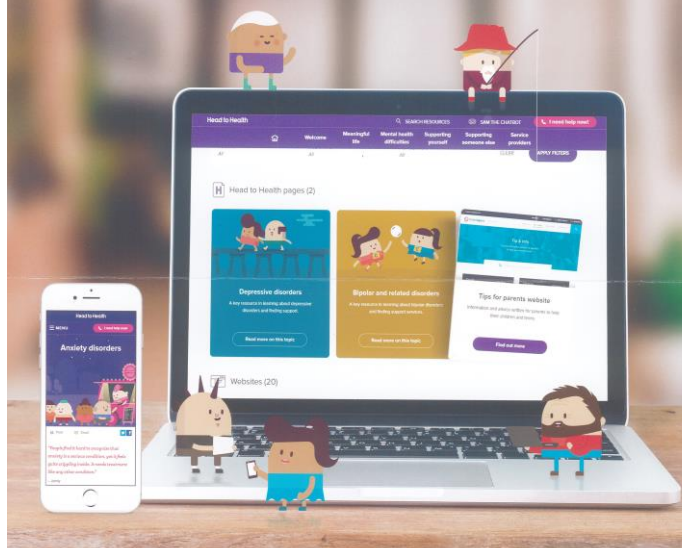
Weight Loss Consultant
Specialising in Healthy Eating

RED ROOF STUDIOS
125 Commercial Road
YARRAM VIC 3971

PHONE 0429832346
TO MAKE AN APPOINTMENT

Head to Health

Are you looking for
mental health support?



Go to headtohealth.gov.au to find online
and phone services and information.



Australian Government
Department of Health

Available at the RTC

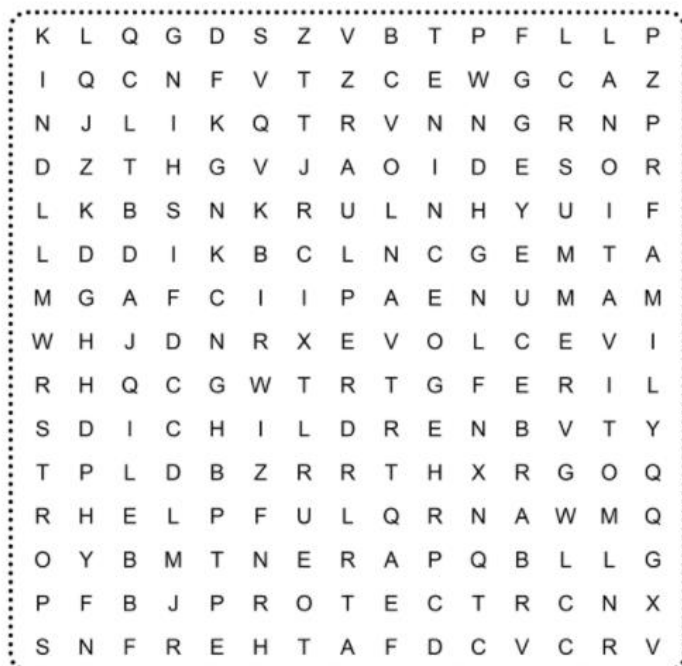
— FARM —
FRESH



★ **EGGS** ★

\$6 Dozen

FATHER'S DAY WORD SEARCH



BARBECUE
BRAVE
CHILDREN
DAD
FAMILY

FATHER
FISHING
GRILLING
HELPFUL
JUNE

KIND
LOVE
MOTIVATIONAL
PARENT
PICNIC

PROTECT
SPORTS
STRONG
SUMMER
TEACHER

**I MAY LOOK LIKE I'M
HAVING DEEP
THOUGHTS BUT
99% OF THE
TIME I'M THINKING
ABOUT WHAT I'M
GOING TO EAT LATER**

	9			1				
	3						2	7
6						4		
	2		6	8	7			3
7				3				1
					5		1	
					9	6	4	
		8	2		3			

JULY SOLUTIONS

3	2	8	6	1	5	9	4	7
1	7	9	8	4	2	5	6	3
6	4	5	7	3	9	2	1	8
2	3	1	5	6	7	4	8	9
8	5	6	4	9	1	7	3	2
4	9	7	2	8	3	1	5	6
7	1	2	3	5	8	6	9	4
5	6	3	9	2	4	8	7	1
9	8	4	1	7	6	3	2	5

2	4	7	6	8	1	9	3	5
6	8	3	9	5	7	1	4	2
5	9	1	2	4	3	7	8	6
7	5	9	8	2	6	4	1	3
3	2	6	1	9	4	8	5	7
4	1	8	3	7	5	2	6	9
8	6	2	5	1	9	3	7	4
9	3	4	7	6	8	5	2	1
1	7	5	4	3	2	6	9	8

Things to do with Dad on Father's Day

a	f	o	o	t	b	a	l	l	j	d	b
h	l	e	r	t	y	u	b	o	p	a	i
s	d	b	a	s	e	b	a	l	g	k	
c	h	j	k	l	g	z	r	x	c	v	e
a	s	g	b	n	m	q	b	w	m	e	r
m	r	o	t	y	u	i	e	o	u	p	i
p	a	l	c	s	d	f	q	g	s	h	d
i	j	f	k	c	l	z	u	x	e	c	e
n	v	b	n	m	e	k	e	l	u	g	f
g	d	s	a	p	o	r	i	u	m	y	t
r	e	f	i	s	h	i	n	g	w	q	t
z	s	r	d	f	y	u	m	o	v	i	e



baseball



bike ride



golf



fishing



barbeque



football



soccer



movie



camping



museum

HAPPY
Father's Day