



WELSHPOOL TOWN PLANNING MEETING

Monday 2nd May, 5.30pm – Welshpool Memorial Hall

The Welshpool and District Advisory Group is committed to implementing a Welshpool Town Plan to replace the expired version. A Town Plan is an essential document for all towns to have to initiate all future developments.

Recently, Have Your Say notices were distributed amongst the Welshpool and District community asking for public ideas on how Welshpool can be developed in a 5 year time frame. These notices were collected at the Welshpool Rural Transaction Centre.

We were pleased to receive an enthusiastic response covering a varied range of ideas on what people would like to see actioned.

There is a Public meeting at the Welshpool Memorial Hall on Monday 2nd May at 5.30pm. It will be a general discussion on how we can strengthen Welshpool in creating a Town Planning committee and the relevant steps in creating a Town Plan.

South Gippsland Shire Council representatives will be attending offering their knowledge and expertise on how we can move this project forward.

For more information contact the Welshpool Rural Transaction Centre on 5688 1087 or rtcwelshpool@bigpond.com



Disclaimer

This newsletter is an independent self-funded publication produced by staff and volunteers of the RTC and it does not reflect the opinions of the Committee members, South Gippsland Shire, or the Department of Planning and Community Development.



TRADING HOURS
MON - FRI
10.00AM - 3.00PM

- WELSHPOOL COMMUNITY LIBRARY
- BENDIGO BANK AGENCY
- SERVICES AUSTRALIA AGENCY
- V/LINE TICKETING OFFICE
- ROOM HIRE AVAILABLE
- PASSPORT APPLICATIONS
- COPY & PRINT SERVICES
- BISLEY WORKWEAR

Other services by appointment only

- Gibson Accounting – 5176 2031



We're closer than you think

Our Agents can help you connect with Centrelink, Medicare and other government programs and services.

Australian Government Services Australia Agents have free self service facilities. They also have staff who can help you.

At our Agents you can:

- use our computer to access my.gov.au and other government programs and services and to search for jobs
- use the telephone to access our self service options or to speak to us
- access free Wi-Fi 24/7 to connect to government services. No password required
- scan, fax and photocopy documents
- have your confirmation of identity documents certified
- lodge forms, print information and pick up brochures.

YOUR LOCAL AGENT IS:

Welshpool Rural Transaction Centre
14 Main Street
Welshpool Vic 3966



Australian Government
Services Australia

servicesaustralia.gov.au



VLIN BUS SERVICES

**Purchase tickets at the
Rural Transaction Centre or
collect a VLINE Bus Timetable**



**The \$250 Power Saving Bonus program
has been extended to 30 June 2022 to
support more eligible Victorian
households with their energy bills**

**Visit compare.energy.vic.gov.au
to see the eligibility requirements**



Gibson Accounting

Kieran Olree

PH: (03) 5176 2031

Fax: (03) 5174 6313

101 Hotham Street
Traralgon, Vic 3844

Email: kieran@gibsonaccounting.com.au

Kieran Olree is at the RTC every Wednesday

By appointment only - **(03) 5176 2031**

For more information and all the latest tax
updates and handy hints for tax time,
please visit Gibson's website:

www.gibsonaccounting.com.au

WELSHPOOL FIRE BRIGADE



The Welshpool & District Advisory Group have donated \$1000 to the Welshpool Fire Brigade towards an outdoor seating area at the Welshpool Fire Station. The purpose of the area would be for debriefing after call outs, an area for training as well as for social events to bring brigade members and families together.



WELSHPOOL GOLF CLUB



"Here is our president receiving a donation from Di Casey on behalf of the Welshpool and District Advisory Group. The donation of \$2431 is generated through profits raised through the Welshpool Op Shop. This generous donation will go towards upgrading the golf clubs cool room. Thank you to all those involved."





New rain jackets available just in time for the upcoming Winter months. New season hoodies also available. Call in to view the full range. 14 Main St Welshpool 5688 1087



The Welshpool Agency hours remain as

Monday to Friday 10am to 3pm

**Please note our new phone number
5688 1087**



RTC Room for Hire

Office Hire : \$11 per hour

\$33 per day

Myli - My Community Library



Are you a member of Myli – My Community Library? (formally known as the West Gippsland Libraries). Join today at the Rural Transaction Centre and have access to a variety of books, audio books, DVD's and more. If it's not on the shelf it can be ordered in. Open Monday to Friday 10am to 3pm. A Librarian also attends every Wednesday 12noon to 2pm for any assistance required.

**Big on products.
Big on service.
And big on local banking**

We deliver the products and technology you'd expect from a big bank, plus the personal service you wouldn't.

As one of Australia's biggest banks, our heartland remains firmly local. As does our focus on you and the quality banking products you need.

Feel good about who you bank with. Try Bendigo.

Find out more. Call 5688 1087 or search Bendigo Bank Welshpool.

**BANK
LOCAL**



**Community Bank
Toora & Foster and Welshpool**

Welshpool Op Shop & Nursery

Welshpool Op Shop & Nursery
Monday to Friday
10am – 4pm
Saturday 10am – 2pm
PH: 0474 591 014



EFTPOS now available



Grab a Bargain! Fill a basket of clothing for \$5

All ladies, men's and children's clothes.



New stock just arrived.

All seed packs only \$2

Potting mix \$7 a bag



Welshpool Golf Club

Casserole Night

Saturday 7th May 2022

2 course meal

\$10 per adult, \$5 per child

Bar open at 5pm, meals from 6pm

Bookings are essential for catering purposes. Call or message 0429429281

Bring the family for a good old fashioned casserole dinner. Don't be shy, come and enjoy a social outing and support your local club.



ARTHUR SUTHERLAND RECREATION RESERVE

WELSHPOOL

15th ANNUAL

**SEAFOOD
FEAST!**

Saturday 14th May

7.00 pm start

\$70.00 PER HEAD

* B.Y.O Drinks

Limited seating - Tables available

BOOKINGS CLOSE 7/5/2022

Bookings & Enquiries: Madelaine Mason: 0409 976 211

www.scientificillustrator.com
Gina M. M.

Welshpool Basketball Association

Congratulations to our Minis and Juniors Grand Finalists

Minis Silver (10) def Pink (4)

Juniors White (24) def Pink (22)

MVP for the season went to Kalroy and Maddi.

Players of the day were Jaden and Reanna.

A big THANK YOU to the [Port Welshpool Fishing Club](#) for their kind donation of \$400 going towards this year's trophies, as well as some donations from a few parents and players. Thank you.

We look forward to seeing you all again in September. Please keep in mind helpers and/or committee members will be required for next season.



ANZAC DAY 2022

The Welshpool ANZAC Day Service was held at 9.30am and was attended by a large crowd. The service was conducted by Rod Coughran-Lane from the Friends of Toora RSL Sub Branch, as well as representatives from the School of Air Traffic Control from the Sale RAAF Base. The service was followed by morning tea at the Welshpool Hall.



Ingredients

1 ¼ cups (110g) Uncle Tobys
Traditional Rolled Oats
1 ¼ cups (110g) Desiccated coconut
1 cup (150g) plain flour
150g unsalted butter
¼ cup (90g) golden syrup
1 cup (220g) raw sugar
½ tsp Bicarbonate Soda

STEP 1: Preheat oven to 180°C. Combine the oats, coconut, flour and a pinch of salt in a bowl. Set aside. Place the butter, golden syrup and sugar in a saucepan over medium heat, stirring until butter melts. Bring to a simmer and cook for a further 1-2 minutes until sugar dissolves. Remove from heat, cool slightly, then add the bicarb soda and 1 tbs water. Stir to combine, then pour over the oat mixture.

STEP 2: Using a wooden spoon, combine butter and oat mixture. Using 1 tbs mixture each, roll into 24 equal-sized balls. Divide between two baking paper-lined baking trays, leaving 3cm between each.

STEP 3: Flatten biscuits slightly, then bake for 10-12 minutes until the top tray is slightly golden. Swap trays and cook for a further 6-8 minutes until all biscuits are golden. Remove from oven and cool completely on a wire rack.

Port Welshpool and District Bowling Club

The wet weather came and went just at the right times during our last monthly triples of the season sponsored by the [Community Bank Toora and Foster](#). A big thank you to our regular teams who supported all of our triples this season along with all of our terrific sponsors.

For the fourth time this season, winners were Ray, Bruce and Jeff from Meeniyen and the home team of Greeny, Angela and Errol were runners-up.

Again, a huge thank you to our fantastic catering team.



Paint & More

Welcome to Paint & More, your new paint and accessories store at 27 Main St Welshpool.

Murray Francis is the manager. Many may know him already from local sport, paint contracting and a stint serving at the Welshpool hotel. He brings over 20 years' experience in the domestic and commercial painting field. And with 4 years of retail with MG trading as well, customer service and sourcing suppliers are well catered for. Isobel Fisher is on the team with a wealth of retail experience and has been helping in the paint contracting business also and is learning rapidly, product applications in the field.

It appeared to us there was a void in the specialised paint and coatings market. Freight or travelling was (and still is) an issue to obtain quality Haymes, Wattyl and Oldfields brands that we stock. These companies have been very accommodating in getting us set up. Over time we will add marine, industrial and automotive products.

We aim to offer the best advice, products and service to Welshpool and surrounding districts. As part of the HBT network we have a massive supplier list to expand our offerings into the future in some hardware and rural lines.

In a short while we will be adding a shop/ site consult, equipment hire options and an online store.

We are very community minded and enjoy giving back to organisations that operate in a not for profit environment in our area. Welshpool seems to have a positive uplift at the moment and we are glad to be part of it.

The business will be open in the next week or so (hours will be advertised), and hope to service your needs even when not open by phone, email or FB message. We will be offering delivery from Foster to Woodside (and surrounding areas). Follow our FB site so we can inform you of giveaways and store promotions.

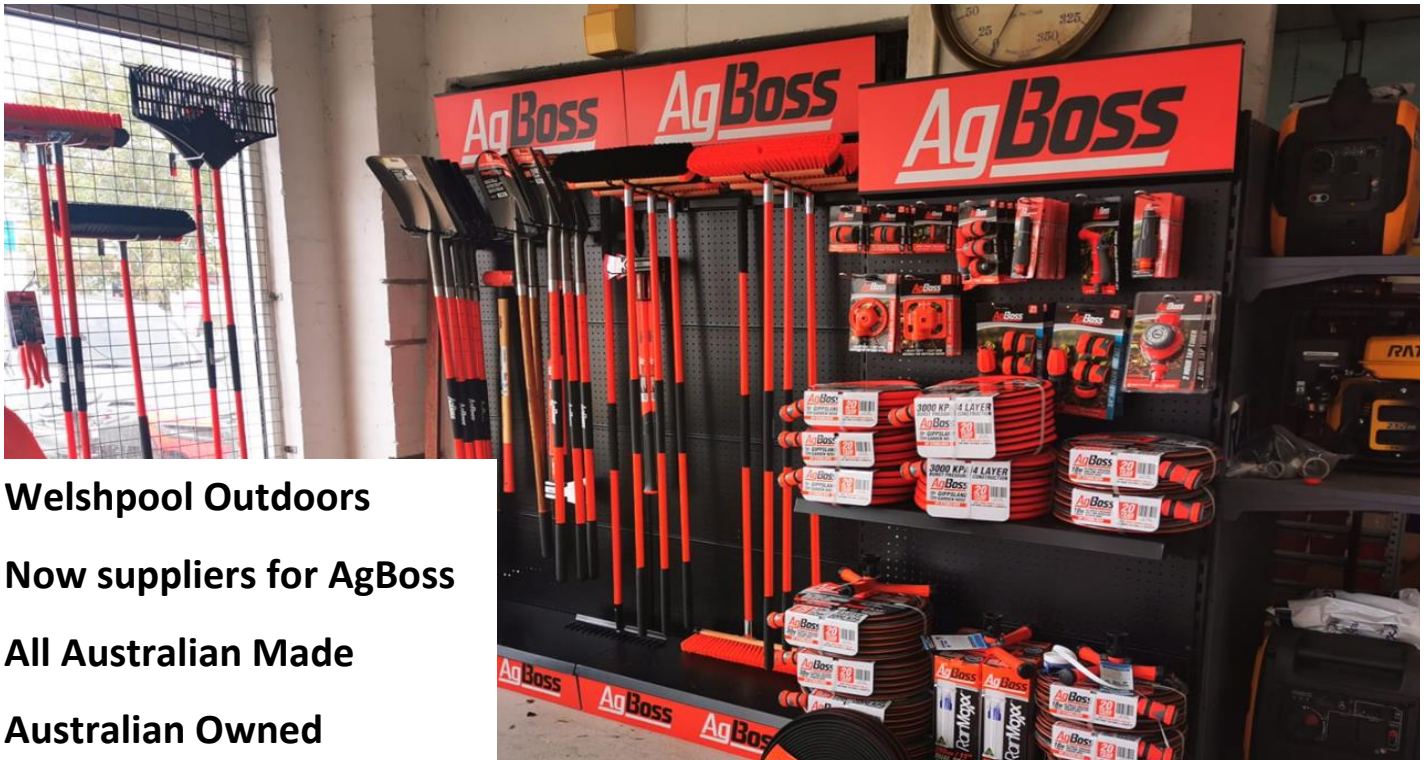
Isobel and Murray can't wait to meet/ see you again and remember, 'we know what we're doing... and we care about what you're doing.'



**E.W. & H.P. FOWLER
WELSHPOOL OUTDOORS
& ORIGIN GAS SUPPLIES**

**19 MAIN STREET
WELSHPOOL VIC 3966
PH: 0356881304**

EMAIL: welshpooloutdoors@bigpond.com



**Welshpool Outdoors
Now suppliers for AgBoss
All Australian Made
Australian Owned**



WELSHPOOL POST OFFICE

20 Main Street Welshpool Phone: 5688 1419

Email: welshpoolpostal@bigpond.com

**Spoil Mum this
Mother's Day Sunday
8th May !!!**

**Large Variety of
Mother's Day Gift
Ideas in Store.**

***Darrell Lea Gift Bags, Tilley
& Goat Soap Ranges,
Random Harvest Gourmet
Dressings, and more in
store.***

**Darrell Lea Gift bag
just for Mum \$25**



Port Welshpool and District Maritime Museum

The Museum is still closed as we are dealing with renovations, but as they say, “good things come to those who wait”, and we don’t mind waiting as the update on the old girl will mean she lives on for another 100 + yrs. As she stands valuable history is there for the now and most importantly the future with more being added all the time.

Because we are closed we want to keep in touch with the community and so the flyer below tells you of our next history talk with guest speaker Mike McCarthy.

His award winning book will be on sale on the day,[sorry we have no EFTPOS] but with an award winning sticker and autographed by Mike what a great keepsake or present for that up and coming birthday or dare I mention it Christmas present.

So it doesn’t slip your memory, mark your diary and we look forward to seeing you.

PORT WELSHPOOL & DISTRICT MARITIME MUSEUM

will be hosting another of the very interesting talks, to cover an important part of the areas history;

Masons Mill, Hedley,

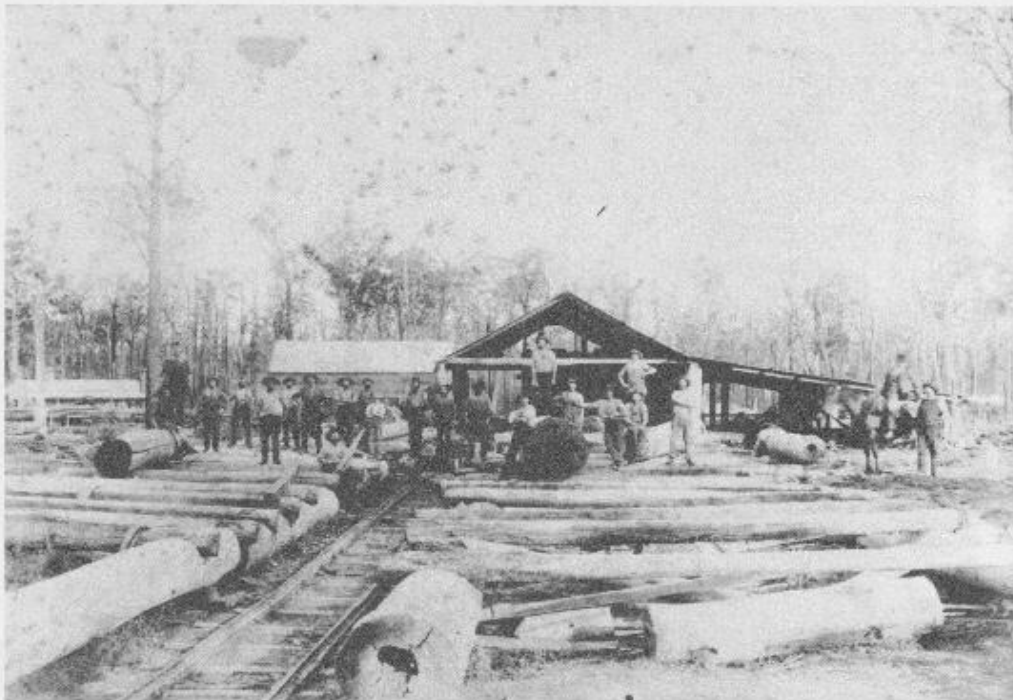
including the Sawmill, Tramway, Timber and Workers,

GUEST SPEAKER; Mike McCarthy.

DATE; Wednesday 25th . MAY 2022. At 1pm.

WHERE; Ferry Terminal Building. Port Welshpool.

Entrance \$2.00 (cash only, sorry no cards.).



Following Mikes talk afternoon tea will be served.
Raffle on the day, don't forget some coins.



Reminder – Playgroup will return on Monday 2nd May at 9.30am at Welshpool Kinder. New families welcome



Danny O'BRIEN MP

Member for Gippsland South

54B Cunninghame St, Sale VIC 3853

03 5144 1987

danny.obrien@parliament.vic.gov.au

www.dannyobrienmp.com.au

Working for Gippsland South

[f](#) [t](#) [i](#) /dannyobrienmp

THE NATIONALS for Regional Victoria



Bar & Bottle Shop Open Tues – Sun 4pm onwards

Accommodation Available

Bistro is temporarily closed

Main Street Welshpool, Vic 3966

Contact: **Ph: (03) 56881309**

FOSTER SEAFOODS



35 Main Street, Foster

Ph: (03) 5682 2815

With catches of Inlet fish arriving within the shop on a daily basis and our vessels returning from extended trips into Bass Strait, you can be assured that the quality is second to none.

We also have an extensive list of products with very competitive prices.

**BE STRONG
BECAUSE THINGS
WILL GET BETTER.
IT MAY BE STORMY
NOW BUT IT NEVER
RAINS FOREVER.**

- EVAN CARMICHAEL

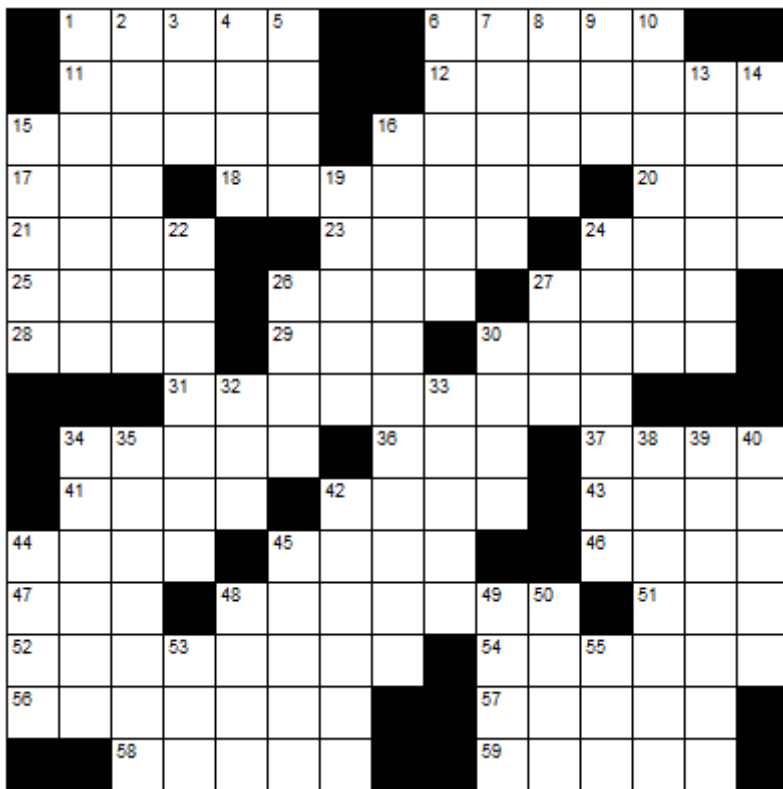
BUTTERFLY PASSENGER SERVICE

Butterfly Passenger Service is available to all South Gippsland residents who have to travel to shops or to attend medical appointments during COVID 19 restrictions.

If you don't have your own transport and need to be somewhere please call Kerry on 0411 334 236 to discuss your travel requirements and get a quote.



CROSSWORD



Down

1. Study of the physical world
2. Shape
3. Form of "to be"
4. Hardly believable
5. Distinctive flair
6. Orb
7. Josh
8. Makes a mistake
9. Astern
10. Conference
13. Bring into being
14. Russian emperor
15. Category
16. Keyboard instruments
19. Exhaust
22. Common name for the US
24. Rigging rope
26. Hint
27. Buddy
30. Small amount
32. Consumed
33. Poker holdings
34. Apparition
35. Gruesome
38. Employees
39. Control
40. Lawful
42. Peril
44. Clutter
45. Door pivot
48. In perfect condition
49. Formerly (archaic)
50. French for "Head"
53. Local Area Network
55. Greek god of flocks

Across

1. Weighing machine
6. Water vapor
11. Reef material
12. Flawless
15. Hollywood industry
16. Leases
17. Permit
18. Without ceasing
20. Darjeeling or oolong
21. Dwarf buffalo
23. Scarce
24. Teller of untruths
25. Lowlife
26. A hollow in a mountain
27. Breathe hard
28. Arid
29. Fifty-two in Roman numerals
30. Itchy canine ailment
31. In a lewd way
34. Strike
36. Cap
37. Absent Without Leave
41. Rate
42. Accomplished
43. Lariat
44. Isinglass
45. Difficult
46. Remnant
47. Chapter in history
48. Way of thinking
51. Malayan isthmus
52. Brothers and sisters
54. Rescind
56. Unusual
57. Begin
58. Reply to a knock
59. On edge



Winning entry will receive a free coffee and cake from the Welshpool Café & Supermarket



LAST MONTHS CROSSWORD RESULT

A	P	S	E		C	A	R	P		M	A	R	L		
I	R	O	N		A	F	I	R	E		A	L	O	E	
M	O	L	T		N	A	D	I	R		N	E	A	P	
S	W	I	R	L		R	E	M	I	T	T	E	N	T	
		D	U	A	D		R	E	C	U	R				
P	L	A	S	T	I	C		S	A	L	A	M	I		
E	A	R	T	H	N	U	T			A	P	A	C	E	
C	P	I			E	P	H	A	H			L	I	D	
K	E	T	C	H			Y	I	E	L	D	I	N	G	
	L	Y	R	I	C	S		R	E	V	E	N	G	E	
			U	N	L	A	Y		D	I	N	G			
M	I	S	S	T	A	T	E	D		I	T	E	M	S	
A	R	I	A			M	I	T	E	S		A	R	E	A
G	I	L	D			P	R	I	E	S		T	E	A	T
I	S	L	E				E	S	S	E		E	R	N	E

Sponsored by: **Welshpool Supermarket**

Entries must be received before

15th May, 2022

All correct entries will be put into a hat and the winner will be drawn by Supermarket staff. No correspondence will be entered into etc.

Please remember to double-check your spelling.

Remember to include your name, contact number and date on your returned entry, Thank you.

Winner of the March Crossword:

Michelle Christensen



Community Group Listing

***Welshpool & District Advisory Group** – Contact: Linda Razinger 03 5688 1051

***Welshpool Fire Brigade** – training every Thursday night 7.30pm

***Welshpool Recreation Reserve** – Contact: Madelaine Mason 0409 976 211

***Welshpool Basketball Association** – Contact: Madelaine Mason 0409 976 211

***Prom Coast Soccer Club** – <http://www.promcoastsoccerclub.com.au/>
Contact: Shellie Cashmore 0419 322 384

***Welshpool Memorial Hall** – Contact: Alan O'Neill 5688 1419

***Friends of Agnes Falls** – <https://www.facebook.com/FriendsOfAgnesFalls/>

***Port Welshpool Fishing Club** – Contact: Jenny Horner 0428 862 028

***Port Welshpool Working Group** – Contact: Alma Mattingley 0427 310 599

***Welshpool & District Playgroup** – <https://www.facebook.com/WelshpoolPlaygroup/>

***Welshpool & District Horticultural Society** – meeting every 2nd Wednesday of the month.
Contact: Tom Reakes Ph. 0429966002

***Port Welshpool & District Maritime Museum** – Email: pwmuseum@gmail.com

***Port Welshpool Coast Guard** – Contact: Peter Carrolan 0417 372 059

Port Welshpool Fishing Club

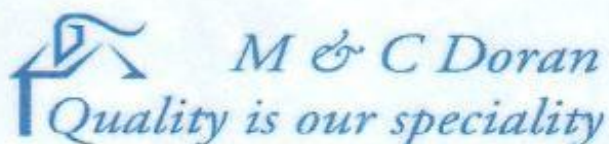
Our Easter get together was a huge success, the kids had a great time hunting for Easter eggs. A big thank you to everyone who helped in the kitchen, with raffles and the egg hunt.

A reminder to our members the 21/22 season ends the last day of April. With the beautiful weather at the moment it's a great time to be out catching fish, there are plenty of categories that still need filling. There will be no May dinner, the next dinner is Presentation Night Saturday 11th June, Queens Birthday long weekend. We would appreciate RSVP sooner rather than later for catering purposes. Tickets for our major raffle are available from any committee member or tickets can be purchased from The Olive Branch and Welshpool Outdoors so please support our club. Some fantastic prizes up for grabs.

We look forward to catching up with everyone for Presentation Night. Until then tight lines and stay safe by the water.



LOCAL SERVICES.....



Michael Doran
Qualified Carpenter & Joiner

16 Turnbull Street
Port Welshpool VIC 3965
Email: buildingservices@mcldoran.com.au
Ph. 03 5688 1229
Mb. 0429 038 409
Fax. 03 5688 1377

AAC MOBILE AUTO AIR CONDITIONING
Maintenance & Repairs to...
TRUCKS * TRACTORS * MACHINERY * PASSENGER & FOOD TRANSPORT VEHICLES
Ian Dubignon **M. 0448 761 642**



John Hoy
Trade qualified Farrier
(25 years experience)

0447 229 390

DIGITAL - TV - ANTENNAS

TV & PHONE POINTS

TV & VCR TUNING

HOME THEATRE ALARM INTERCOM INSTALLATIONS

ANDY
PH: 0412 445 554

COMMERCIAL UPGRADES
DIGITAL INSTALLATION
SPECIALIST

ABN 69 653 510 722
ACA REG B18282VIC

“

*You will never regret
being kind.*

#MOTIVATION



FOR ALL YOUR TREATED PINE NEEDS

POSTS SAWN TIMBER DECKING CUSTOM TREATING
SLEEPERS NUTS AND BOLTS PALINGS AND MORE

SOUTH GIPPSLAND HIGHWAY, ALBERTON, VIC, 3971
Ph (03) 5183 2437 Fax (03) 5183 2659 Email sales@albertontimber.com.au

CONCRETER



0400 840 729

WWW.SGCONCRETE.COM.AU

TV & DATA SYSTEMS

Digital Antennas, TV wall mounts, Data & Computer outlets, Home Theatre, Hidden Wiring, Networks, Offices, CCTV, Repairs, Equipment Installations

Licensed Cable Installer

Domestic, Commerical & Industrial

Steve Mooney 0427 257 222

SOUTH GIPPSLAND SEPTIC TANK CLEANING

Also Portable Toilets Hire

Call Chris Whittle

(03) 5688 1572



Kirwan Builders

TK Construction

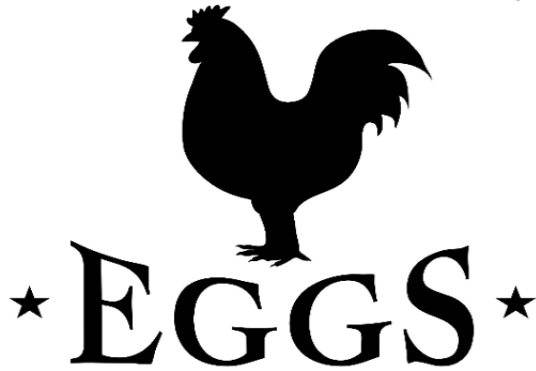
"for all your building needs"

TK Construction - Michael Kirwan
6565 South Gippsland Highway HEDLEY VIC 3967
P: 03 5184 1223 | M: 0428 911 900
E: kirwanbuilders@gmail.com

HIA MEMBERSHIP: 813 711 | DB-U: 20399 | A.B.N: 40 896 158 242

Available at the Welshpool Op Shop

FARM
FRESH



\$6 Dozen

Is your block a fire Hazard

**On Shore
Property Maintenance**

We Offer

Removal of Rubbish
Tree Trimming
Gutters Cleaned
Pressure Washing
Solar Panels Cleaned
General Maintenance
Fencing
Excavator Hire

0455 997 752

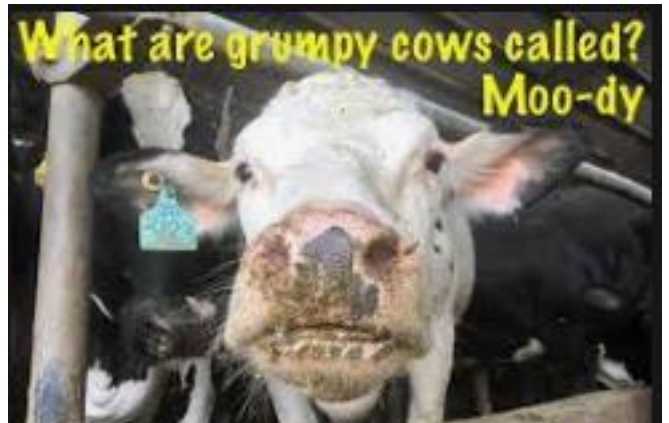
0432 529 721

**On Shore Property
Maintenance**



Foster Golf Club
7 Reserve Street
Foster Victoria
3960

19
Chantelle Peters (03)5682 2272
golfclub19@outlook.com.au



ANTHONY BRAVINGTON

Cleaning & Property Maintenance Contractor

- Commercial Cleaning, Domestic Cleaning and all types of Property Maintenance
- Accommodation Contracts
- Office Building Contracts
- Retail Shops Contracts
- School Cleaning Contracts
- Builders Cleans
- All Property Maintenance etc
- Window Cleaning
- Carpet Steam Cleaning

THURSDAYS & FRIDAYS ONLY

1 bedroom house	\$70
2 bedroom house	\$90
3 bedroom house	\$120
4 bedroom house	\$150

Call Anthony for all your cleaning needs

Mobile: 0418 146 986

Email: anthonybravington@bigpond.com



SCHOOLS ARE BACK

**TAKE EXTRA CARE
DURING SCHOOL TIMES**



O L E A N D E R Y E N M I H C
 E L M L B O E M G N I N E V E
 R X I I C G N A A F F A B L E
 E L T N A A U O E N D U R E O
 N E E E G G T I D T K K U R V
 E T F S N U R S S O I C G M E
 G H I A S T I A B E T A I O R
 A G L M R E C S D O N S P N L
 D I V I D E N D T I H P A U O
 E R M I R B W L Z P E A L M A
 S T N O R T C E L E G N A E D
 L U F K N A H T L U K K T N E
 R O I R E P U S C L D C I T B
 P R E S S U R E R E D N A W I
 D A S H I N G N I S A E L P T

affable	dashing	farewell	mastodon	pack
angel	debit	forecast	monument	palatial
	dividend			pig
bait	dog	gradient	nickname	pleasing
beet	dullness	guise		pressure
beta			obstacle	
bite	eager	knapsack	oleander	renegade
brim	electron		organize	rout
	endure	language	outright	
chimney	evening	lessen	overload	superior
	extent	lifetime		
		linguist		thankful
				wanderer

Yesterday I saw a book called
 "How to solve 50% of your
 problems" So I bought two books.



9				7		2	
				4	3	8	
			2	3	7		
				6	5		1 3
6	8			7	2		
2	5			9			3
	6	1					9
							5

WHAT WORD
 BECOMES SHORTER
 WHEN YOU ADD TWO
 LETTERS TO IT?

SHORT.

March Solution

4	1	5	3	9	8	2	7	6
7	3	2	1	6	5	4	8	9
9	6	8	2	4	7	1	5	3
3	8	4	6	5	2	7	9	1
1	2	7	4	8	9	3	6	5
6	5	9	7	1	3	8	4	2
8	4	3	5	2	6	9	1	7
2	9	6	8	7	1	5	3	4
5	7	1	9	3	4	6	2	8

Spelling Boggle

i	e	l
r	b	e
e	v	s

How many words can you make
with these letters?

Spelling Boggle

c	r	e
b	a	l
y	i	c

How many words can you make
with these letters?